

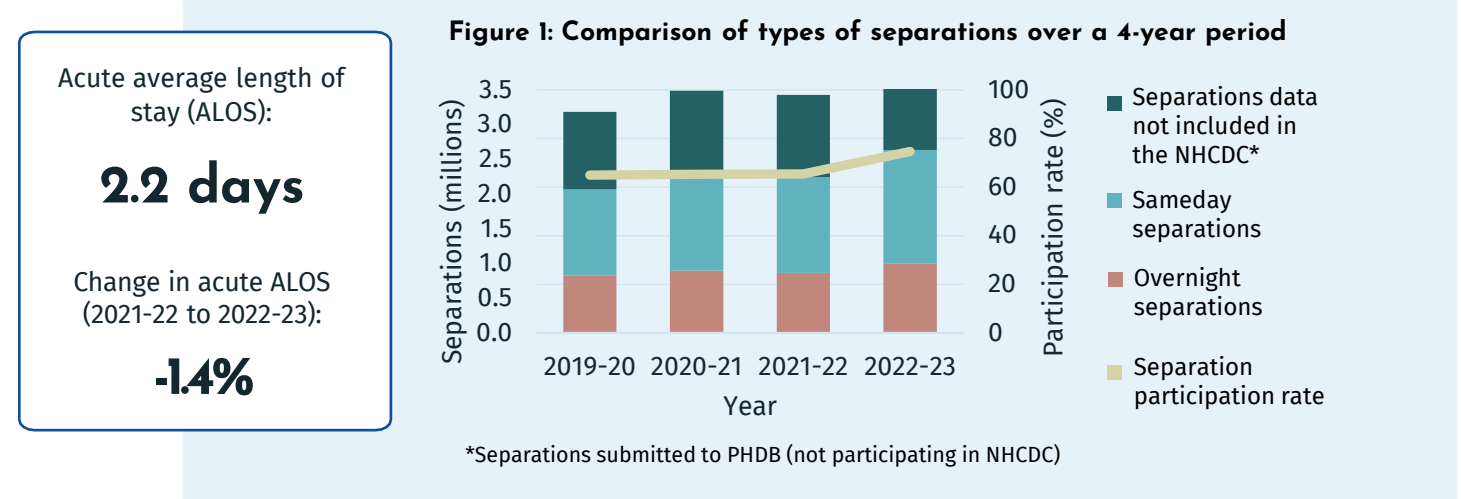
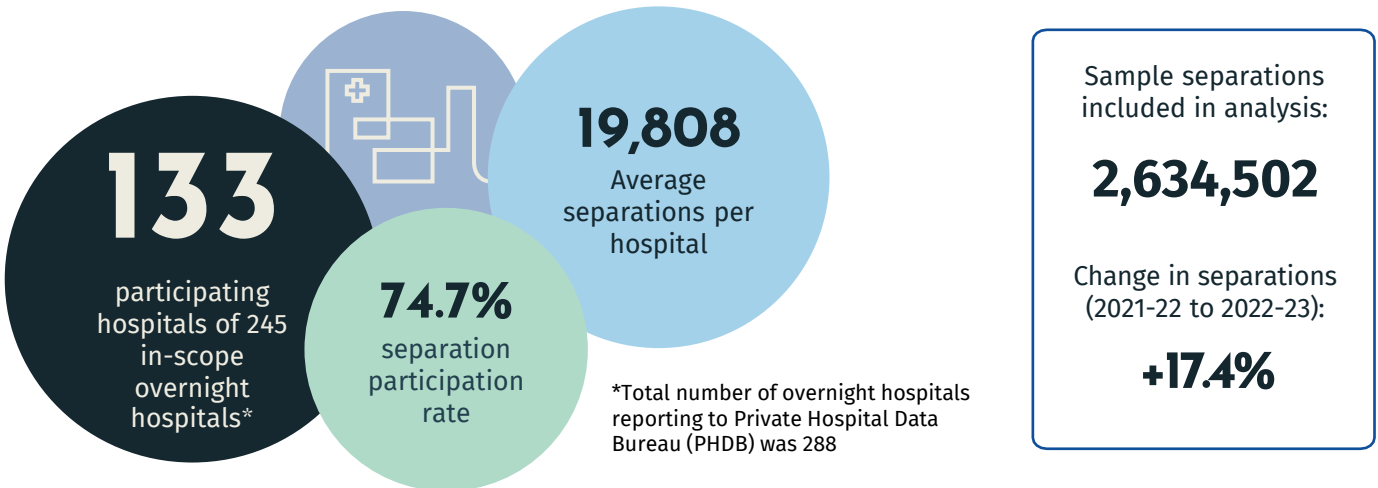
NHCDC Private Sector 2022-23



This National Hospital Cost Data Collection (NHCDC) collected private hospital cost information for the 2022-23 financial year. It is important to note that the coronavirus disease 2019 pandemic has impacted the accuracy and the completeness of private sector hospital expenditure and activity in prior years. As a result this year may not be consistent with prior years and across jurisdictions.

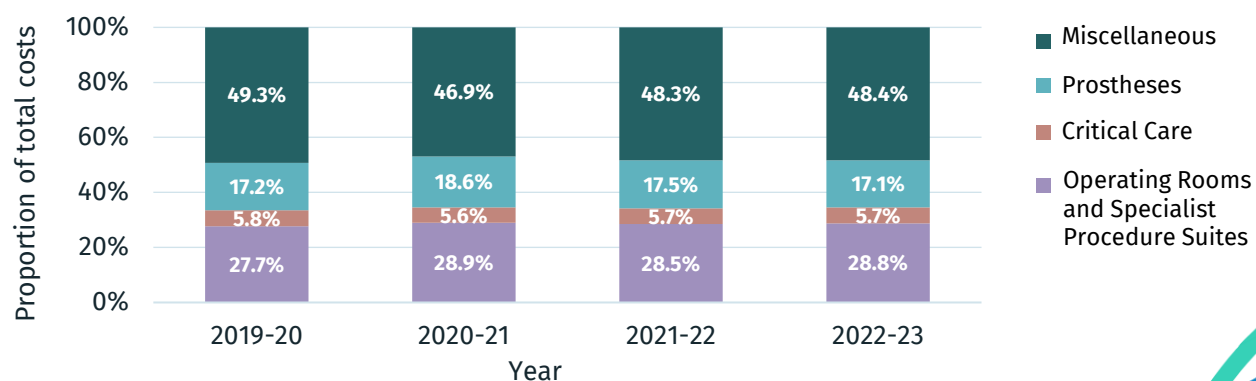
The NHCDC Private Sector Report contains detailed summary tables of all reported figures.

Reporting Period: 01 July 2022 - 30 June 2023 | AR-DRG Version: 11.0 | AN-SNAP Version: 5.0



Breakdown of costs by cost bucket group

Figure 2: Distribution of costs across the four cost buckets over a 4-year period



MDC: Top 5 Cost Weighted Separations

Rank	MDC	MDC Description	Cost weight	No. of weighted seps	Cost weighted seps	ALOS
1	08	08: Diseases and Disorders of the Musculoskeletal System and Connective Tissue	2.01	487,696	980,269	2.9
2	05	05: Diseases and Disorders of the Circulatory System	2.20	226,562	498,436	3.3
3	06	06: Diseases and Disorders of the Digestive System	0.57	627,032	357,408	1.6
4	09	09: Diseases and Disorders of the Skin, Subcutaneous Tissue and Breast	1.01	169,137	170,828	2.2
5	14	14: Pregnancy, Childbirth and the Puerperium	1.58	102,579	162,075	3.6

Top 5 AR-DRGs by Volume Highest Volume of Population-Adjusted Separations

AR-DRGs with the highest number of population-adjusted weighted separations (most common separations)

Rank	AR-DRG	AR-DRG Description	2021-22		2022-23		
			Cost weighted seps	No. of weighted seps	ALOS	Cost weighted seps	No. of weighted seps
1	R63Z	Pharmacotherapy for Neoplastic Disorders	63,838	290,171	1.0	53,617	268,086
2	G48B	Colonoscopy, Minor Complexity	51,917	162,242	1.0	55,646	185,485
3	L61Z	Haemodialysis	15,201	152,009	1.0	19,250	148,075
4	G46B	Complex Endoscopy, Minor Complexity	43,417	120,602	1.0	49,732	142,090
5	G47C	Gastroscopy, Minor Complexity	20,490	85,373	1.0	19,692	89,509

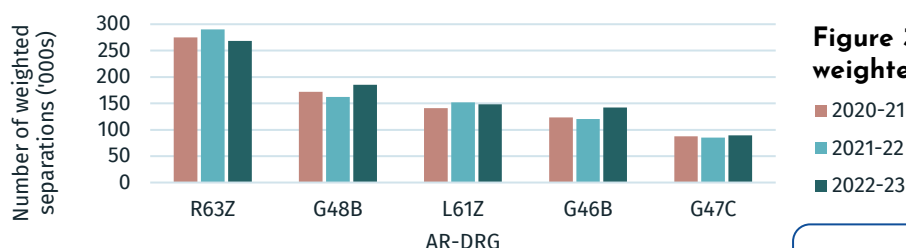


Figure 3: Top 5 AR-DRGs based on number of weighted separations over a 3-year period

AR-DRGs where separations had highest collective cost (high volume separations with high cost)

Highest Volume of Population-Adjusted Separations

Rank	AR-DRG	AR-DRG Description	2021-22		2022-23		
			Cost weighted seps	No. of weighted seps	ALOS	Cost weighted seps	No. of weighted seps
1	I04B	Knee Replacement, Minor Complexity	138,198	37,759	4.1	165,228	46,153
2	I33B	Hip Replacement for Non-Trauma, Minor Complexity	116,729	28,610	3.8	126,754	32,753
3	F24B	Interventional Coronary Procedures, Not Admitted for AMI, Minor Complexity	59,649	24,052	1.4	62,196	27,279
4	O01C	Caesarean Delivery, Minor Complexity	60,978	30,489	4.4	57,485	26,862
5	G48B	Colonoscopy, Minor Complexity	51,917	162,242	1.0	55,646	185,485

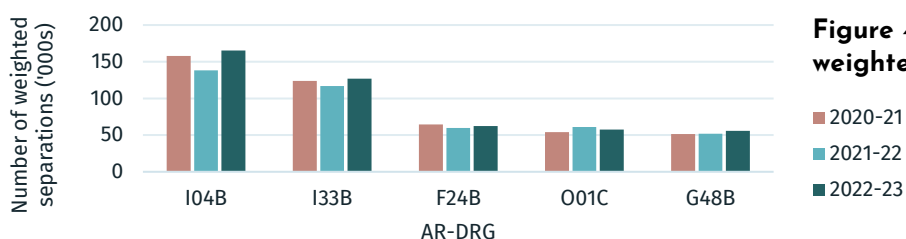


Figure 4: Top 5 AR-DRGs based on cost weighted separations over a 3-year period

Further information

To learn more about the Independent Health and Aged Care Pricing Authority (IHACPA), get in touch with us via the details below.

(02) 8215 1100 enquiries.ihacpa@ihacpa.gov.au ihacpa.gov.au

Find us online to connect with us.

Independent Health and Aged Care Pricing Authority

@IHACPA