

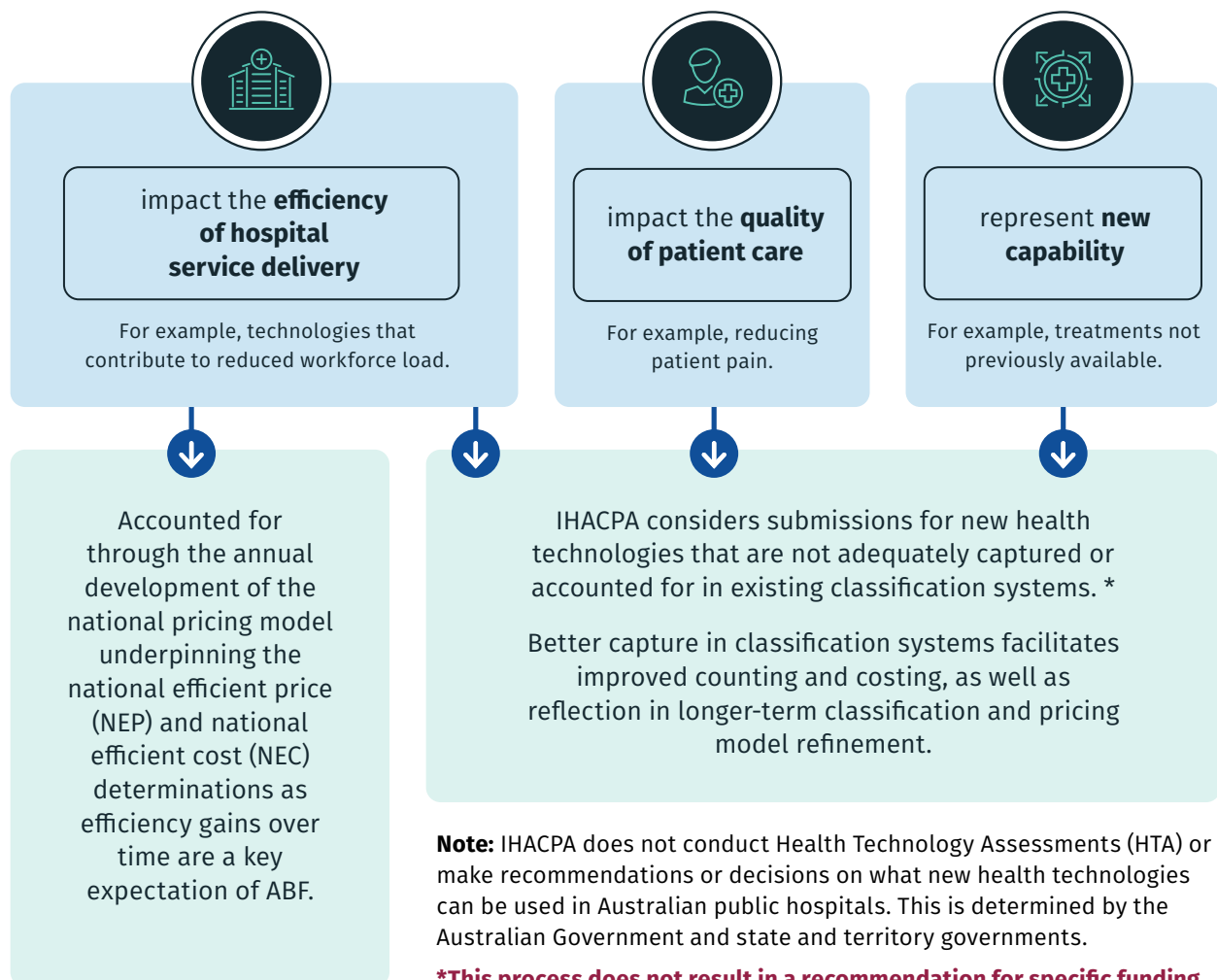
# When to make a new health submission

This fact sheet explains when to make a submission for a new health technology. You can also find out more information on the link between new health technology, activity based funding (ABF) and classification development.

## About new health technology

A health technology is an intervention developed to prevent, diagnose or treat medical conditions, promote health, or organise healthcare delivery<sup>1</sup>. Our focus is on new procedures and interventions when developing classifications. We have identified 3 types of new health technologies that may impact the nature or cost of public hospital service delivery and be relevant to classification development.

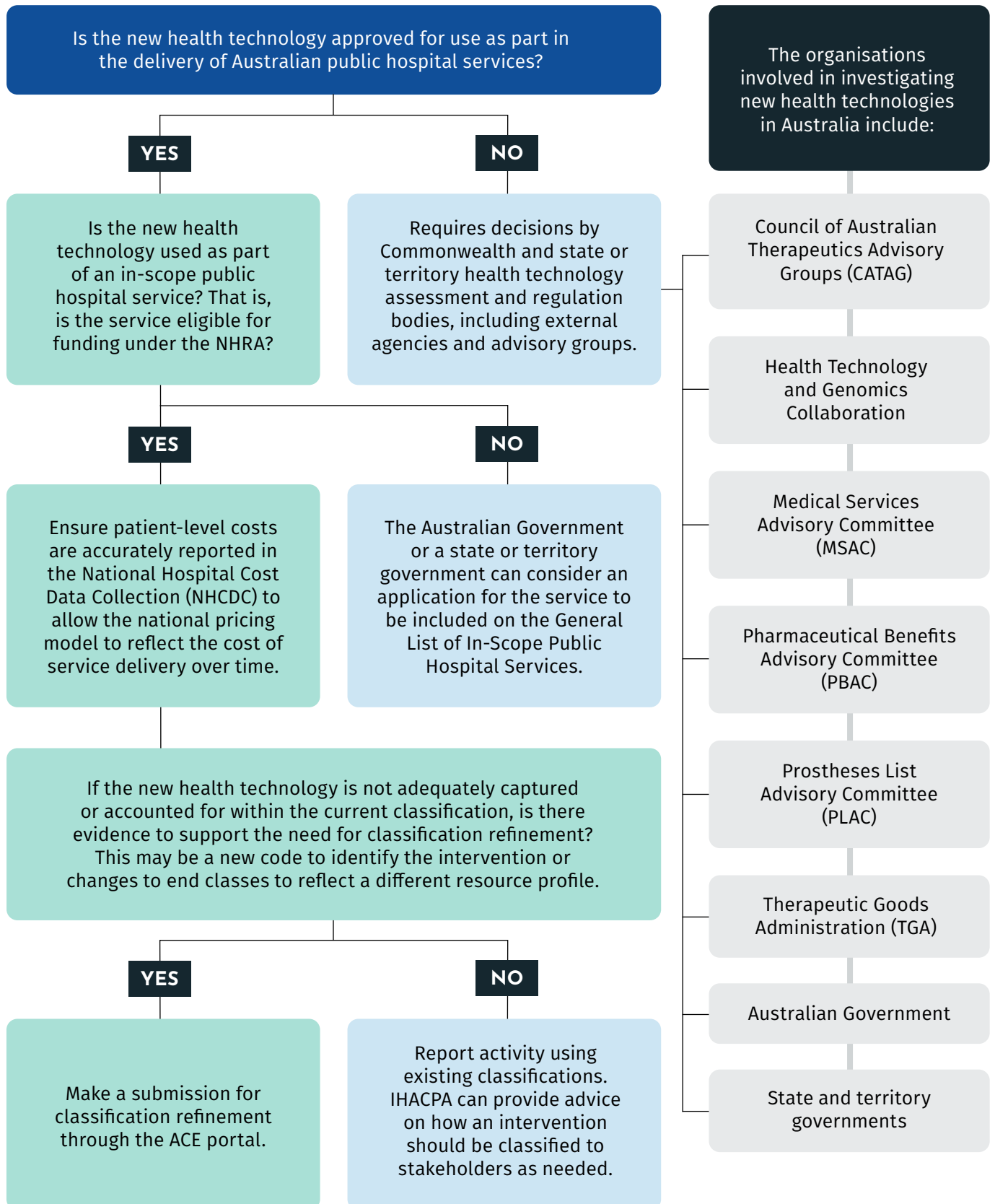
### 3 types of new health technologies that:



<sup>1</sup> As defined in the HTA Glossary.

# When to make a new health technology submission

Use this workflow to help your team find out when to make a submission.



For more information on how to make a submission and what we consider when reviewing submissions, see our [New health technology submission guidelines](#).



## Classification development

In some cases, a new health technology may not fit under the existing classifications. In these cases, we may consider classification development. This includes the use of placeholder codes within the Australian Classification of Health Interventions (ACHI), where necessary.

Classification developments can enable more specific and accurate data for improved reporting in public hospital services. This supports the improved identification, costing and pricing of these services over time.

You can make submissions for new health technologies that are likely to have a material impact on public hospital service delivery and may require classification development. Submissions can be made through the [Australian Classifications Exchange \(ACE\) portal](#).

We consider these submissions through a range of classifications working groups and advisory committees.

## About IHACPA and ABF

IHACPA was established under the *National Health Reform Act 2011* (Cth) as part of reforms to improve Australian public hospitals, including the implementation of ABF. ABF refers to a system for funding public hospital services provided to individual patients using national classifications, cost weights and nationally efficient prices developed by IHACPA. An ABF activity may take the form of a separation, presentation or service event.

## Contact us



(02) 8215 1100



[enquiries.ihacpa@ihacpa.gov.au](mailto:enquiries.ihacpa@ihacpa.gov.au)



[ihacpa.gov.au](http://ihacpa.gov.au)

Find us on social media

