

Independent Hospital Pricing Authority

Urgency Related Groups Grouper

Version 1.4.8 User Guide

April 2021



IHPA

Urgency Related Group –Grouper – version 1.4.8

© Independent Hospital Pricing Authority 2021

This publication is available for your use under a [Creative Commons BY Attribution 3.0 Australia](#) licence, with the exception of the Independent Hospital Pricing Authority logo, photographs, images, signatures and where otherwise stated. The full licence terms are available from [the Creative Commons website](#).



Use of Independent Hospital Pricing Authority material under a [Creative Commons BY Attribution 3.0 Australia](#) licence requires you to attribute the work (but not in any way that suggests that the Independent Hospital Pricing Authority endorses you or your use of the work).

Independent Hospital Pricing Authority material used 'as supplied'.

Provided you have not modified or transformed Independent Hospital Pricing Authority material in any way including, for example, by changing Independent Hospital Pricing Authority text – then the Independent Hospital Pricing Authority prefers the following attribution:

Source: The Independent Hospital Pricing Authority

Table of Contents

Urgency Related Groups Grouper	0
Abbreviations	3
Background	4
Purpose	4
Application Requirements	4
Input Data Preparation	4
Application Inputs	4
Episode Number	5
Sex	5
Episode End Status	5
Triage	5
Type of Visit	6
Running the Application	7
Step 1: Select the Input File	7
Step 2: Running the Grouper	8
Step 3: Output of the Grouper	9

Abbreviations

The following abbreviations are used throughout the document.

Term	Description
AM	Australian Modification
AR-DRG	Australian Refined Diagnosis Related Group
CM	Clinical Modification
ED	Emergency Department
ICD	International Statistical Classification of Diseases and Related Health Problems
IHPA	Independent Hospital Pricing Authority
MDB	Major Diagnostic Block
MDC	Major Diagnostic Category
SNOMED CT-AU	Systematized Nomenclature of Medicine Clinical Terms – Australian version
UDG	Urgency Disposition Groups
URG	Urgency Related Groups

Background

The Independent Hospital Pricing Authority (IHPA) uses the Urgency Related Groups (URG) classification to categorise patient presentations to emergency departments for activity based funding purposes. In addition, IHPA develops grouping software (referred to as a 'grouper') for the URG classification which is used by jurisdictions and other stakeholders.

The URG grouper assigns emergency department patient presentations to the appropriate URG category based on the reported type of visit, episode end status, triage and diagnosis data. This application assists jurisdictions in activity based funding data submissions as required under the IHPA Three Year Data Plan, and is an essential component in the calculation of the National Efficient Price.

Further information on the URG classification and related components is available through the IHPA website: <https://www.ihipa.gov.au/what-we-do/emergency-care>.

IHPA has revised the URG Grouper application to include U07.7 [Covid-19 vaccines causing adverse effects in therapeutic use] short list code. This version is named Version 1.4.8.

Purpose

The URG grouper application provides the following facilities:

- the ability to map other version of diagnosis codes to major diagnosis blocks;
- the ability to group a Comma Delimited data file interactively and view group results and summary results; and

Application Requirements

The URG grouper application requires the Java Runtime Environment (JRE) to be installed in order to run. This can be downloaded and installed from the following page.

<https://java.com/en/download/>

Input Data Preparation

Health practitioners are expected to map its local diagnosis codes to ICD10AM 10edition short list codes before running this application. IHPA can provide mapping files to assist jurisdictions/hospitals for mapping various edition codes to ICD10 short list diagnosis code, which used in this application.

Application Inputs

The application requires a single data file to be provided in the Comma Separated Values (CSV) format. The input file must contain the seven data items in sequence for the URG Grouper to work correctly. These are:

- Episode number (Epino);
- Sex;
- Episode end Status;
- Triage;
- Type of Visit;
- Diagnosis code;

Episode Number

A unique episode number (Epino) for each episode is also required to link the URG with the complete ED episode.

Sex

The valid values for the “Sex” field are:

Value	Description
1	male
2	female
3	Intersex or indeterminate
9	Not stated/inadequately described

Episode End Status

The valid values for the “Episode End Status” field are:

Value	Description
1	Admitted to this hospital (including to units or beds within the emergency department)
2	Non-admitted patient emergency department service episode completed – departed without being admitted or referred to another hospital
3	Non-admitted patient emergency department service episode completed – referred to another hospital for admission
4	Did not wait to be attended by a health care professional
5	Left at own risk after being attended by a health care professional but before the non-admitted patient emergency department services episode was completed
6	Died in emergency department as a non-admitted patient
7	Dead on arrival, not treated in emergency department
8	Registered, advised of another health care service, and left the emergency department without being attended by a health care professional
9	Not stated/inadequately described

Triage

The valid values for the “Triage” field are:

Value	Description
-------	-------------

Value	Description
1	Resuscitation: Immediate (Within seconds)
2	Emergency: Within 10 minutes
3	Urgent: Within 30 minutes
4	Semi-urgent: Within 60 minutes
5	Non-urgent: Within 120 minutes
9	Triage Category – not assigned

Type of Visit

The valid values for the “Type of Visit” field are:

Value	Description
1	Emergency presentation
2	Returned visit, planned
3	Pre-arranged admission
4	Patient in transit
5	Dead on arrival
9	Not reported / unknown

Running the Application

The application is run by double clicking the URG_Grouper.exe file. This will load the main application window shown in Figure 1, which will guide you through the rest of the process.

The main window includes the following two buttons:

- **Select Input File**, which is used to select the CSV data file to be grouped; and
- **Submit**, which is used to run the grouper.

Note: the grouper will not work unless a data file in the CSV format is selected.

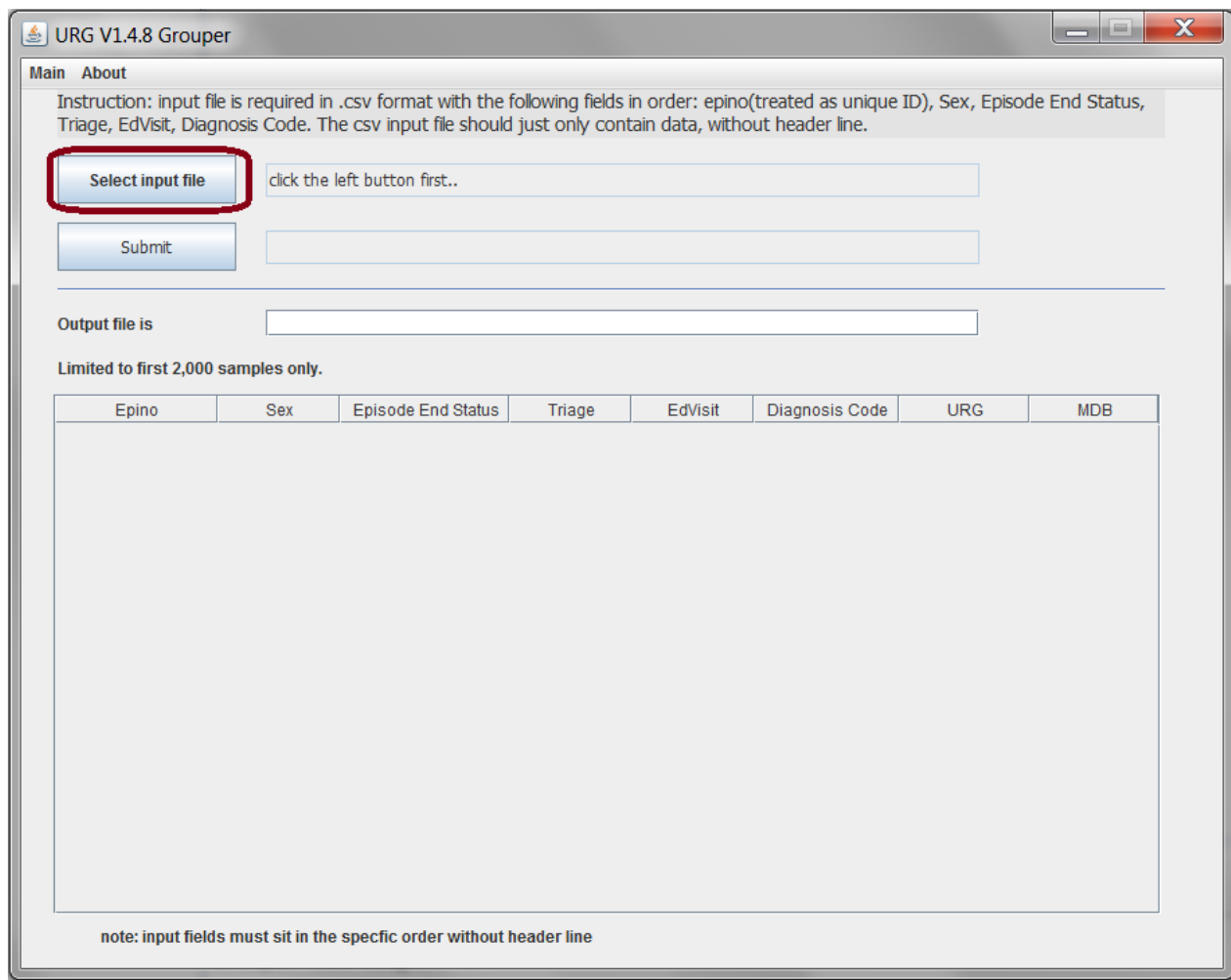


Figure 1: URG Grouper Main Window

The main window also includes a table which displays a sample of the episodes being processed while the grouper is running and the location of the output file when the grouper is complete.

The steps to running the grouper are provided below.

Step 1: Select the Input File

To select a data file to be grouped: Click the *Select Input File* button circled in red below, and select a .CSV data file from the Open window, as shown in Figure 2, and click Open.

Note: the grouper will not work unless a file is selected and it is in the CSV format.

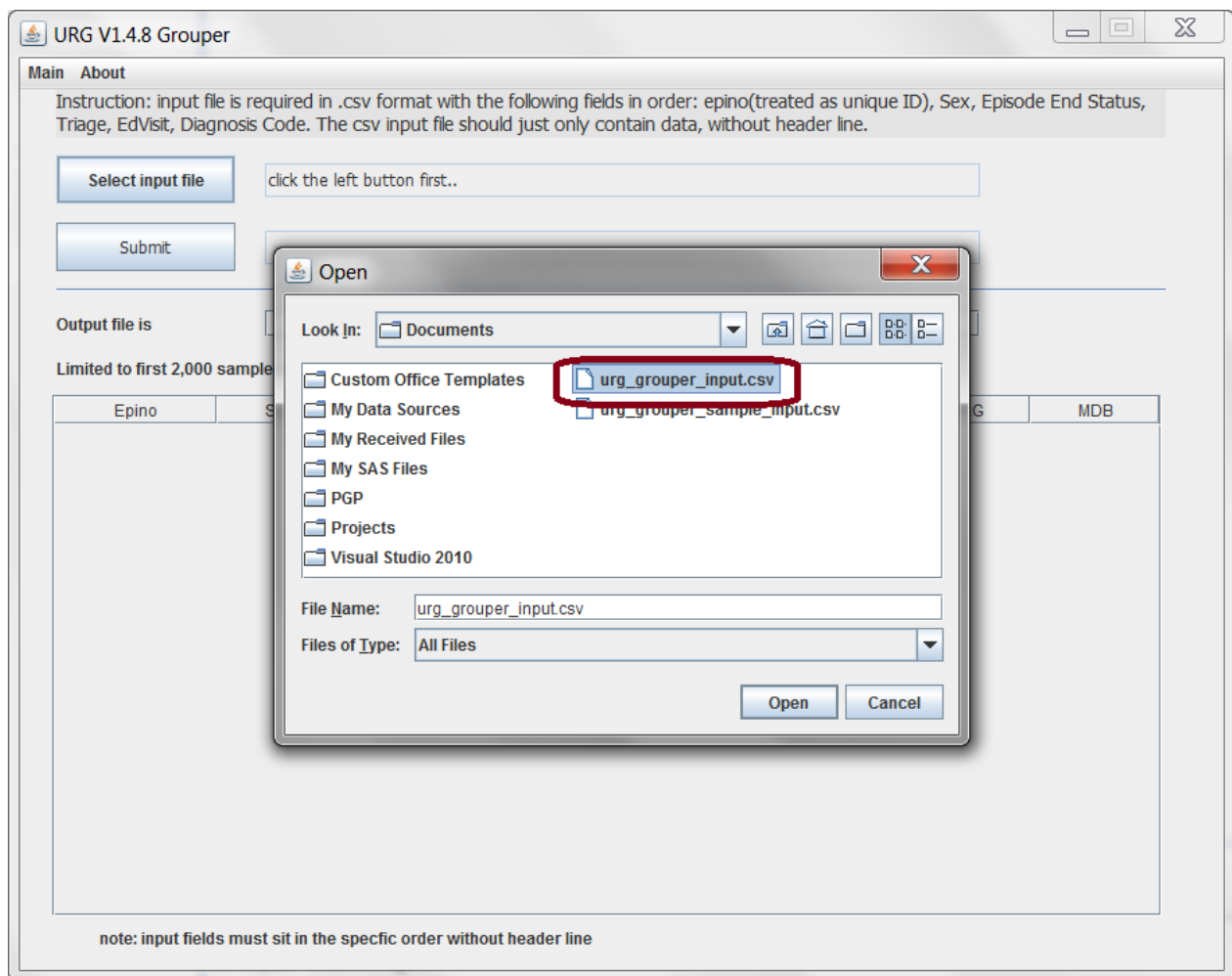


Figure 2: Selecting Data to be grouped

On completing this step, the filename and path of the file will be shown in the text field to the right of the *Select Input File* button. This will allow the running of the grouper on the selected file.

Step 2: Running the Grouper

To run the grouper: Select the *Submit* button as shown in Figure 3 bellow. While the grouper is running, the text "Grouper is Running" will be displayed in the field beside the *Submit* button. As the grouper executes, a sample of the records being processed will be added to the table in the main window.

The grouper may take a few minutes to run for a larger file. Should there be an error the text "Grouper is Running" may change to "Input file format error".

Note: the data file must be in a column specific order as described in [Application Inputs](#) above.

URG V1.4.8 Grouper

Main About

Instruction: input file is required in .csv format with the following fields in order: epino(treated as unique ID), Sex, Episode End Status, Triage, EdVisit, Diagnosis Code. The csv input file should just only contain data, without header line.

Select input file C:\Users\Andy Yang\Documents\urg_grouper_input.csv

Submit

Output file is

Limited to first 2,000 samples only.

Epino	Sex	Episode End Status	Triage	EdVisit	Diagnosis Code	URG	MDB
-------	-----	--------------------	--------	---------	----------------	-----	-----

note: input fields must sit in the specific order without header line

Figure 3: Submitting a file for grouping

On completing this step, the text “The Grouper completed successfully” will appear beside the Submit button. The filename and path of the grouped output file will be shown in the text field to the right of the “Output file is” label.

Step 3: Output of the Grouper

The final output of the grouper will merge the results of the URGs with the original data that was provided. Two additional columns URG and MDB are added which indicates the grouping results for each ED presentation.

An example of this output can be seen by scrolling to the right on the table as shown in Figure 4 below. The grouped results for all records will be output to a .CSV file in the same folder as the file selected in Step 1. The filename and path of this file will be shown in the text field circled in red below.

URG V1.4.8 Grouper

Main About

Instruction: input file is required in .csv format with the following fields in order: epino(treated as unique ID), Sex, Episode End Status, Triage, EdVisit, Diagnosis Code. The csv input file should just only contain data, without header line.

Select input file C:\Users\Andy Yang\Documents\urg_grouper_input.csv

Submit The grouper completed successfully.

Output file is C:\Users\Andy Yang\Documents\urg_grouper_input_grouped.csv

Limited to first 2,000 samples only.

Epino	Sex	Episode End Status	Triage	EdVisit	Diagnosis Code	URG	MDB
1	1	2	4	1	L0313	068	3I
2	1	2	4	1	H669	065	3G
3	1	2	4	1	S9340	058	2BA
4	2	1	3	1	R51	021	3E
5	1	2	2	1	R074	043	3A
6	2	2	4	1	T149	058	2B
7	2	2	3	1	S4220	050	2B
8	1	2	4	1	T151	058	2B
9	1	2	5	1	U071	117	3N
10	2	2	4	1	M7999	063	3H
11	1	2	4	1	F99	112	4
12	1	2	3	1	J399	057	3G
13	1	2	5	1	J399	115	3G
14	2	5	3	1	R69	126	6
15	1	2	5	1	S610	070	2B
16	2	1	3	1	R2989	029	3H
17	2	2	4	1	J069	108	3B
18	1	1	4	1	D649	088	3J
19	1	6	2	1	A099	124	3C
20	2	2	3	1	J459	055	3B
21	2	2	5	1	S5220	070	2B
22	2	8	4	1	R69	073	
23	1	2	4	1	C349	108	3B

note: input fields must sit in the specific order without header line

Figure 4: Grouper output preview.

On completing this step, the grouper should have completed successfully. Meanwhile, a new file with the name being <input file name>+ "_Grouped" will be created in the same folder as the input file, shown in Figure 5.

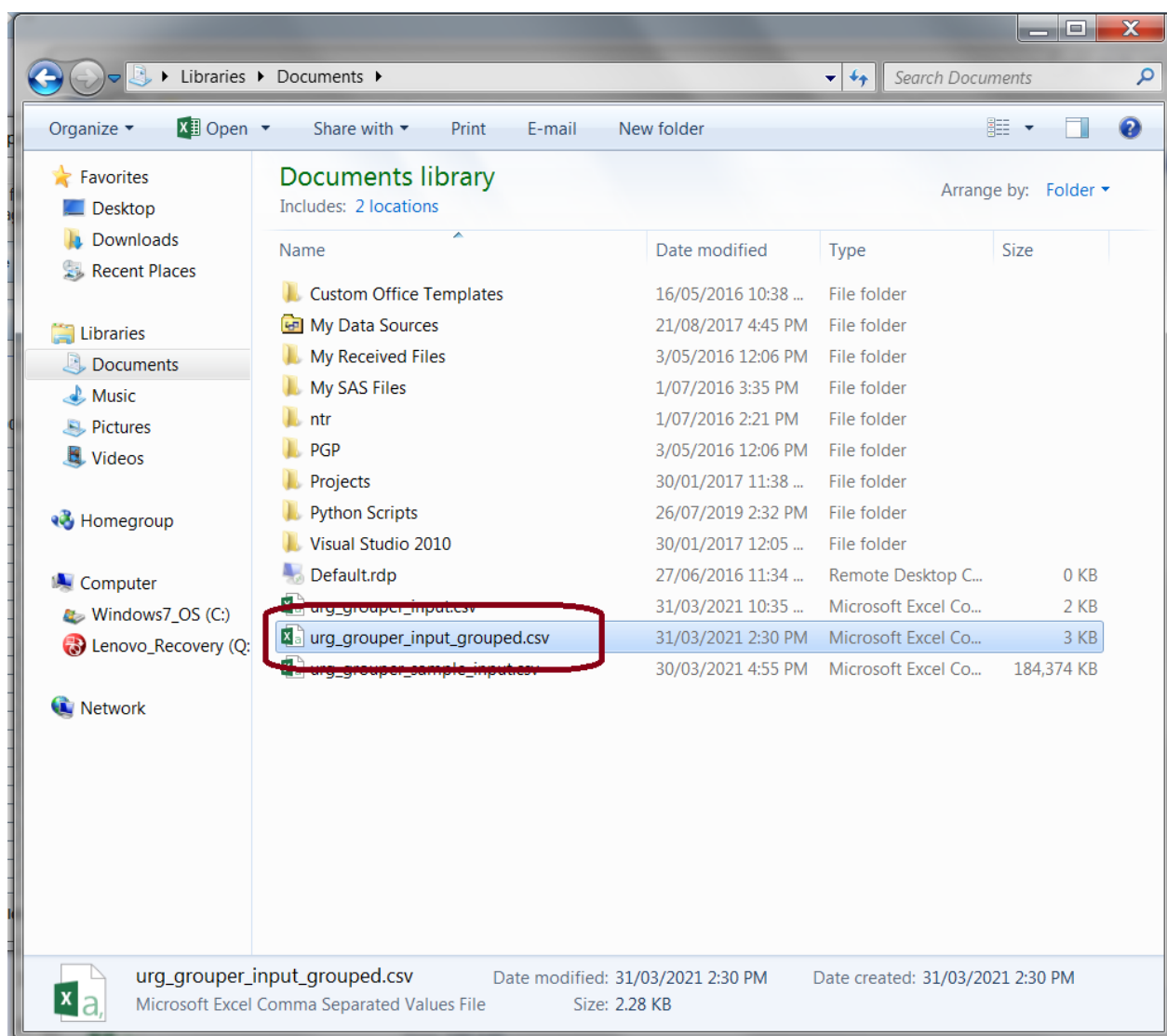


Figure 5: Grouper .csv output file

Note: More information on the URG grouper, such as version history and contact details for application support, can be found by clicking the 'About' menu button at the top of the URG grouper application window.

Independent Hospital Pricing Authority

Level 6, 1 Oxford Street
Sydney NSW 2000

Phone 02 8215 1100
Email enquiries.ihpa@ihpa.gov.au
Twitter @IHPAnews

www.ihpa.gov.au