

National Pricing Model 2023–24

For Australian public hospital services

Technical Specifications

March 2023

National Pricing Model 2023–24 – Technical Specifications – March 2023

© Independent Health and Aged Care Pricing Authority 2023

This publication is available for your use under a Creative Commons BY Attribution 3.0 Australia licence, with the exception of the Independent Health and Aged Care Pricing Authority logo, photographs, images, signatures and where otherwise stated. The full licence terms are available from the Creative Commons website.



Use of Independent Health and Aged Care Pricing Authority material under a Creative Commons BY Attribution 3.0 Australia licence requires you to attribute the work (but not in any way that suggests that the Independent Health and Aged Care Pricing Authority endorses you or your use of the work).

Independent Health and Aged Care Pricing Authority material used 'as supplied'.

Provided you have not modified or transformed Independent Health and Aged Care Pricing Authority material in any way including, for example, by changing Independent Health and Aged Care Pricing Authority text – then the Independent Health and Aged Care Pricing Authority prefers the following attribution:

Source: The Independent Health and Aged Care Pricing Authority

Contents

Table of acronyms and abbreviations	3
1. Overview	5
1.1 Purpose	5
1.2 Background.....	5
1.3 National efficient price 2023–24 process	5
2. Admitted acute care cost model	8
2.1 General issues	8
2.2 Analysis of costs to derive NWAU for admitted acute care	9
2.3 Applying the NEP	21
3. Mental health care cost model	24
3.1 General issues	24
3.2 Analysis of costs to derive NWAU for mental health care	24
4. Admitted subacute and non-acute care cost model	32
4.1 General issues	32
4.2 Analysis of costs to derive NWAU for subacute and non-acute admitted care	32
5. Emergency care cost model	38
5.1 General issues	38
5.2 Analysis of costs to derive NWAU for emergency care.....	38
6. Non-admitted care cost model	41
6.1 Overview	41
6.2 Analysis of costs to derive NWAU for non-admitted care.....	41
7. Conversion to a pricing model	46
7.1 Overview	46
7.2 Identification of out-of-scope costs	47
7.3 Derivation of a reference cost.....	48
7.4 Indexation	49
7.5 Transformation of cost model to pricing model	54
7.6 Back-casting for ABF	55
8. Block-funded hospitals	57
8.1 General issues	57
8.2 Analysis of costs	58
8.3 Calculation of national efficient cost	61
8.4 Indexation of the 2020–21 model	62
8.5 Back-casting for block-funded hospitals	63
Appendices	64
Appendix A: Reference tables.....	65
Appendix B: Application of NWAU variables	67
Appendix C: Summary of input data.....	80
Appendix D: List of AR-DRGs adopting the L1.5 H1.5 methodology	82
Appendix E: NEC23 data preparation	83

Table of acronyms and abbreviations

Acronym/ abbreviation	Description
ABF	Activity based funding
ABS	Australian Bureau of Statistics
AECC	Australian emergency care classification
AHR	Avoidable hospital readmission
ALOS	Average length of stay
AMHCC	Australian mental health care classification
AN-SNAP	Australian national subacute and non-acute patient classification
APC	Admitted patient care
APCP	Admitted patient cost proportion
AR-DRG	Australian refined diagnosis related group
ASGS	Australian statistical geography standard
ASNC	Admitted subacute and non-acute care
COAG	Council of Australian Governments
DSS	Data set specification
ED	Emergency department
HAC	Hospital acquired complication
HCP	Hospital casemix protocol
ICU	Intensive care unit
IHACPA	Independent Health and Aged Care Pricing Authority
LHN	Local hospital network
LOS	Length of stay
MAPE	Mean absolute percentage error
MBS	Medicare benefits schedule
MDC	Major diagnostic category, used in AR-DRGs
MHC	Mental health care
MPS	Multi-purpose service
NAPED	Non-admitted patients emergency department
NBEDS	National best endeavours data set
NEC	National efficient cost
NEP	National efficient price
NHCDC	National hospital cost data collection
NHRA	National Health Reform Agreement
NMC	Non-admitted multi-disciplinary clinic
NMDS	National minimum data set

NPHEd	National public hospital establishment database
NWAU	National weighted activity unit
OTA	Organ and Tissue Authority
PICU	Paediatric intensive care unit
SA2	Statistical areas level 2
TTR	Teaching, training and research
UDG	Urgency disposition groups
WAU	Weighted activity unit

1. Overview

1.1 Purpose

This document has been produced as an accompaniment to the National Efficient Price Determination 2023–24 (NEP23) and the National Efficient Cost Determination 2023-24 (NEC23). It provides the technical specifications for how the Independent Health and Aged Care Pricing Authority (IHACPA) developed the activity based funding (ABF) models for the service streams to be funded on this basis from 1 July 2023, and provides guidance to hospitals, local hospital networks (LHN), and state and territory health authorities on how to apply these to hospital activity. It also shows how the national efficient cost (NEC) is determined for hospitals (such as small rural hospitals) funded on a block funded basis.

1.2 Background

The National Health Reform Agreement (NHRA) sets out the intention of the Australian Government, and state and territory governments to work in partnership to improve health outcomes for all Australians. One of the ways in which the NHRA aims to achieve this is through the implementation of national ABF funding arrangements. The NHRA specifies that the central component of ABF is an independently determined NEP and NEC, to be used as a reference for the Commonwealth to determine its funding contribution for Australian public hospital services.

IHACPA is a key element of the NHRA, responsible for the national implementation of an ABF system and in determining the annual NEP and NEC for Australian public hospital services. IHACPA was established as an independent government agency under Commonwealth legislation on 15 December 2011. It has issued eleven NEP Determinations annually since 2012–13 (NEP12) and ten NEC Determinations since 2013–14 (NEC13).

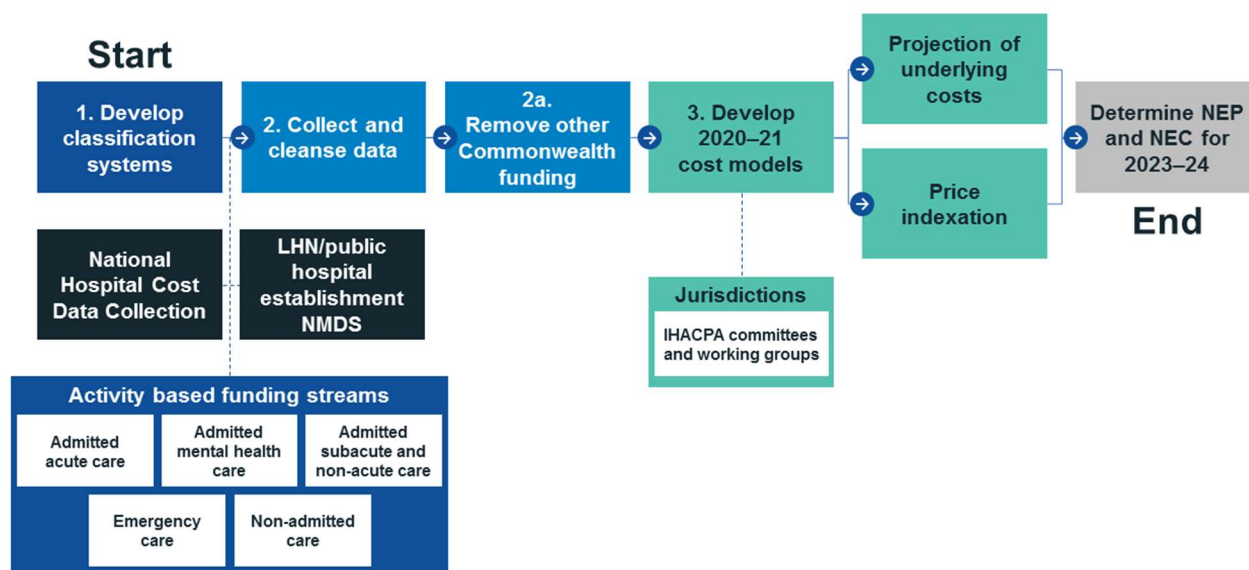
The published NEP and NEC, sets out the determinations for 2023–24 in relation to each of IHACPA's legislative functions, namely:

- The NEP for health care services provided by public hospitals where the services are funded on an activity basis.
- The NEC for health care services provided by public hospitals where the services are funded on a block funded basis.
- The development and specification of classification systems for health care and other services provided by public hospitals.
- Adjustments to the NEP to reflect legitimate and unavoidable variations in the costs of delivering health care services.
- Except where otherwise agreed between the Commonwealth and a state or a territory — to determine the public hospital functions that are to be part-funded in that state or territory by the Commonwealth.
- Publication of a report setting out the NEP and NEC for the coming year and any other information that would support the efficient funding of public hospitals.

1.3 National efficient price 2023–24 process

The figure below outlines the NEP23 process from development of classification systems to publishing the NEP and NEC Determinations for 2023–24.

Figure 1: Process to determine the national efficient price 2023–24



1.3.1 Classification systems

One of the first stages is to classify the hospital activity under various systems dependent on the ABF service stream. IHACPA has collated activity and cost data for each of the ABF service streams to be funded on an activity basis in 2023–24, as follows:

- Admitted acute
- Admitted mental health care
- Admitted subacute and non-acute
- Emergency care
- Non-admitted care.

Classification systems within each service stream are applied uniformly across all available data. Although these systems are developed in part to explain variation in cost between different outputs within the stream, additional systematic variation still occurs. To account for this, various adjustments are modelled and where justified, implemented into the models. The classification systems for each service stream and the source of its cost and activity data are outlined in **Appendix A: Reference tables**.

1.3.2 Data preparation

An important part of the modelling process is the preliminary preparation of both the costing and activity data. The essential steps in the data preparation process are:

- a. A substantial validation process undertaken as the data are received from jurisdictions.
- b. Linking the National Hospital Cost Data Collection (NHCDC) cost file with the admitted patient care activity file at the patient level (which has recorded a success rate of approximately 96 per cent).
- c. Matching mothers with unqualified neonates¹ to ensure costs are properly attributed to the mothers.

¹ See Glossary Item Newborn qualification status (METeOR identifier: 327254)

- d. Identifying any differences in patient characteristics or operational data recorded across the two data sets and reconciling these where appropriate.
- e. Where reported, removing blood costs and/or any identified amounts related to Commonwealth pharmaceutical payments.

The activity and cost data is sourced by IHACPA from various national data collections and is supplemented by additional data provided by the states and territories. In consultation with jurisdictions, IHACPA has identified 396 hospitals to make up the ABF price model and 400 hospitals designated for block funding. Of the block-funded hospitals:

- 22 are being treated separately as specialist psychiatric establishments.
- Nine are major city hospitals.
- One which does not fit the cost model structure.
- 368 hospitals comprise the block-funded cost model.²

Appendix C: Summary of input data provides a summary of the NHCDC Round 25 cost data received for 2020–21.

The next stage in the process is to develop the 2020–21 cost models. This process includes deriving the cost profiles, adjustments and relative weights of classes within each service stream. Development of the individual cost models are explained in further detail in the corresponding sections of this document.

1.3.3 Conversion to a pricing model

There are four steps in the transformation of each year's cost model into its associated pricing model, namely:

- a. Identification and exclusion of costs and activity regarded under the NHRA as out-of-scope for the purpose of ABF.
- b. Derivation of a reference cost (or standardised mean) used to transform the cost model into a cost weight model.
- c. Derivation of an annual indexation rate used to inflate the cost model to a level reflective of the estimated cost of delivering hospital services in the year of the pricing model.
- d. Transformation of the cost model to the pricing model using the results of the previous three steps.

This is explained in further detail in Section 7.

² For a list of block funded hospitals see **Appendices A to D** of the National Efficient Cost Determination 2022–23

2. Admitted acute care cost model

2.1 General issues

2.1.1 Cost unit

An 'episode of admitted patient care' is the cost unit for admitted acute patients. It is 'the period of admitted patient care... characterised by only one care type', and covers the period of care from admission to separation [see Australian Institute of Health and Welfare's Metadata Online Registry (METeOR) identifier 268956].

2.1.2 In-scope activity

There are three care types used to inform the admitted acute cost model³:

- Acute care
- Newborn care
- Other admitted patient care.

All episodes from all funding sources are included in the calculation of the cost weights. This approach is taken to ensure that the sample used for the development of national weighted activity unit (NWAU) is maximised and reflects the overall costs for the hospital. Only in-scope admitted acute episodes and associated relevant costs are included in the calculation of the NEP, as described in Section 7.

In-scope costs

Factors impacting scope of costs include:

- Costs associated with the admitted episode where a patient is admitted through an emergency department that is within the scope of ABF for emergency care. This component of cost is separated from the acute episode and funded through the emergency care funding model.
- Depreciation and other capital costs (including leases) where reported, are removed.
- Indirect costs for teaching, training and research (TTR) are included, but any direct TTR costs are excluded.
- Identified blood costs and Commonwealth pharmaceutical payments are removed.

2.1.3 Classification

Australian Refined Diagnosis Related Groups (AR-DRGs) are used to classify admitted acute care. The version applied for pricing in 2023–24 is AR-DRG Version 11.0.

³ See data element Hospital service – care type, code (METeOR identifier 711010)

2.2 Analysis of costs to derive NWAU for admitted acute care

This section provides an overview of the steps involved in developing the NWAU for admitted acute care. Detailed information in relation to each of the components of the model is included below. In summary, the steps involved in developing the NWAU for admitted acute care are:

- a. Prepare data, including the removal of other Commonwealth expenditure (in particular the pharmaceutical and blood programs).
- b. Incorporate posthumous organ donation activity costs.
- c. Incorporate private patient costs from hospital casemix protocol (HCP) data where there is evidence they have not been provided as part of the NHCDC.
- d. Stratify and weight cost data to activity data.
- e. Calculate inlier bounds from activity data.
- f. Classify episodes into relevant categories including inliers, short-stay and long-stay outliers, designated same-day AR-DRGs, paediatric status, Indigenous status and remoteness area status, receiving COVID-19 treatment and establishments reporting radiotherapy procedures.
- g. Determine cost level for intensive care unit (ICU) adjustment and deduct associated costs.
- h. Derive initial parameters for AR-DRG inlier/outlier model and ensure predicted costs align with actual costs by AR-DRG.
- i. Derive paediatric adjustment, Indigenous adjustment, remoteness adjustment, radiotherapy adjustment and dialysis adjustment.
- j. Derive COVID-19 treatment adjustment.
- k. Derive private patient service adjustment and private patient accommodation adjustment.
- l. Incorporate data trimmed in data preparation process (outlier samples of cost data).
- m. Convert price weights and assign NWAU.
- n. Apply stabilisation of acute weights.

These steps are described in further detail in the following sections.

2.2.1 Data preparation

The 2020–21 NHCDC data is first adjusted to remove those costs associated with spending under other Commonwealth programs. Costs associated with the Commonwealth's pharmaceutical programs are identified by matching the NHCDC at the patient level with a record of the Commonwealth pharmaceutical payments. The residual unmatched payments are apportioned according to the distribution of costs associated with the matched records. All reported blood costs are removed from the NHCDC. The amounts deducted from the reported costs are identified in Chapter 2 of the National Efficient Price Determination 2023–24.

Table 1 shows the trimming stages and the number of episodes trimmed at each stage of the data preparation process.

Table 1: Number of episodes trimmed at each data preparation stage

Trimming stage		Episodes
(a) Initial activity-level cost sample of admitted acute records		6,262,496
Less – Total trimmed episodes		-36,145
(b)	Patient level cost data trimmed under jurisdictional advice	0
(c)	Episodes from hospital-DRG combinations with extremely high or low cost-to-price ratios	-12,600
(d)	Removal of records with total in-scope costs \leq \$23	-23,047
(e)	Observations with extreme outlier costs	-151
(f)	Extremely high or low cost ratios removed after deriving the preliminary regression model	-337
(g)	Multi-day AR-DRG R63Z episodes	-10
(h) Resulting sample size of separations used to create AR-DRG cost profiles		6,226,351

For the financial year 2020–21:

- a. An activity-level cost sample of 6,262,496 admitted acute records (with both the admission and separation dates within this period) were partitioned into two groups for modelling purposes. The first group is evaluated as fit for use to develop AR-DRG cost profiles for the 2020–21 cost model, and a second group identified as not fit for this purpose. The second group is later incorporated into the cost model to calibrate the overall level of costs within the model.
- b. No patient level cost data was removed from the sample based on jurisdictional advice. A preliminary model with length of stay and DRG as explanatory variables of patient cost was derived and applied to the remaining sample.
- c. Episodes from 653 hospital-DRG combinations with extremely high or low cost-to-price ratios were also excluded from the patient level modelling.
- d. The sample was further reduced by 23,047 episodes as a result of removing records with total in-scope costs of \$23 or less.
- e. The remaining sample was then analysed by AR-DRG, and observations with extreme outlier costs were identified and removed. This was done by ranking observations by cost and identifying those values that recorded an extreme increase in cost of over 200 per cent (or a decrease in cost of over 75 per cent) from the previous observation. In total, 151 records were removed at this stage.
- f. The extreme outlier identification stage was undertaken by first deriving a preliminary regression model using length of stay and DRG, and analysing the resulting cost ratios. Following this, another 337 individual records with extremely high or low cost ratios were removed.

- g. In this final stage, multi-day chemotherapy AR-DRG R63Z episodes were trimmed out. The Australian Coding Standards state that the principal diagnosis code Z51.1 – Pharmacotherapy session for neoplasm which informs DRG of R63Z may only be assigned to same-day episodes. The 10 multi-day episodes with this code were trimmed from the cost model.
- h. The resulting sample of 6,226,351 separations were identified for use in creating AR-DRG cost profiles.

2.2.2 Posthumous organ donation activity costs

Posthumous organ donation activity was accounted for in the NEP for the first time in NEP16. This followed advice from the Organ and Tissue Authority (OTA) that funding provided from the OTA to jurisdictions contributes towards the cost of preparing a patient for organ donation, but not for all costs incurred thereafter. This advice from the OTA means that some of the costs of posthumous organ donation are not funded by the Commonwealth and should be in-scope for pricing under the NHRA. This has not changed for NEP23.

IHACPA takes the costs reported against donors in 'care type 9' and redistributes these costs to recipient transplant AR-DRGs in the admitted acute model. The total cost associated with each organ procurement is accounted for by inflating the in-scope cost of patients in AR-DRGs, which typically involves the transplant of relevant organs. Note there is no mechanism to link donors with recipients or to gauge the outcome of a procurement or transplant.

The total cost reported against posthumous organ donors in 2020–21 is \$6,171,722. This results in a national cost inflation in the admitted acute stream of 0.018 per cent.

2.2.3 Private patient costs

Private patient episodes in-scope for ABF include those episodes occurring in a public hospital with a funding source of either '09 Private health insurance' or '13 self-funded' in the 2020–21 Admitted Patient Care (APC) data sets. The NHRA requires that in setting NEP23, IHACPA must take into account the costs of private patients that are met through alternative funding sources. These alternative sources include medical benefits payments by the Australian Government, private health insurance benefits payments, and payments made by patients.

Since NEP14, the HCP dataset, which is reported by private insurance companies, has been used to identify these costs. HCP data identifies both the charges and benefits paid for private patients receiving public hospital services. For NEP23, the private patient records in the HCP dataset were matched with the records in the APC and NHCDC datasets, resulting in a sample of 63.9 per cent match of relevant records. Those private patient records in the NHCDC that were not matched to the HCP data were assumed to have similar characteristics to the matched dataset.

In using the HCP data, a more accurate estimate can be made for the amount of private patient costs not included in the NHCDC data and need a correction factor applied. A correction factor of 1.1 per cent was determined for NEP23.

2.2.4 Stratification and weighting

The sample of costed activity from ABF establishments make up 95.9 per cent of all in-scope admitted acute activity (population). To take account of the un-costed activity, IHACPA weights the costed sample to the population. Weighting of the costed sample is applied to ensure a true representation of the entire population. This weighting process is performed in two stages, as outlined below.

Stage 1 (episodes admitted on or after 1 July 2019 and separated on or before 30 June 2021)

The first stage of the weighting process stratified and weighted the ABF sample to reflect the population of all 2020–21 ABF admitted acute activity with an admission date *on or after* 1 July 2019. The stratification is based on establishment state/territory, size, location and paediatric specialty. Establishments are classified by size using 2022–23 admitted acute NWAU, calculated on 2020–21 activity data (that is, NWAU22 calculator applied to 2020–21 data).

Stage 2 (episodes admitted prior to 1 July 2019)

The second stage of the weighting process weights the 2020–21 activity with an admission date *prior* to 1 July 2019, up to all activity with separation dates within 2019–21. This weighting is done by length of stay quartiles within the AR-DRG. Same-day activity received a weight of 1.0 in this process, as there are no 2020–21 same-day separations with admission dates prior to 1 July 2020.

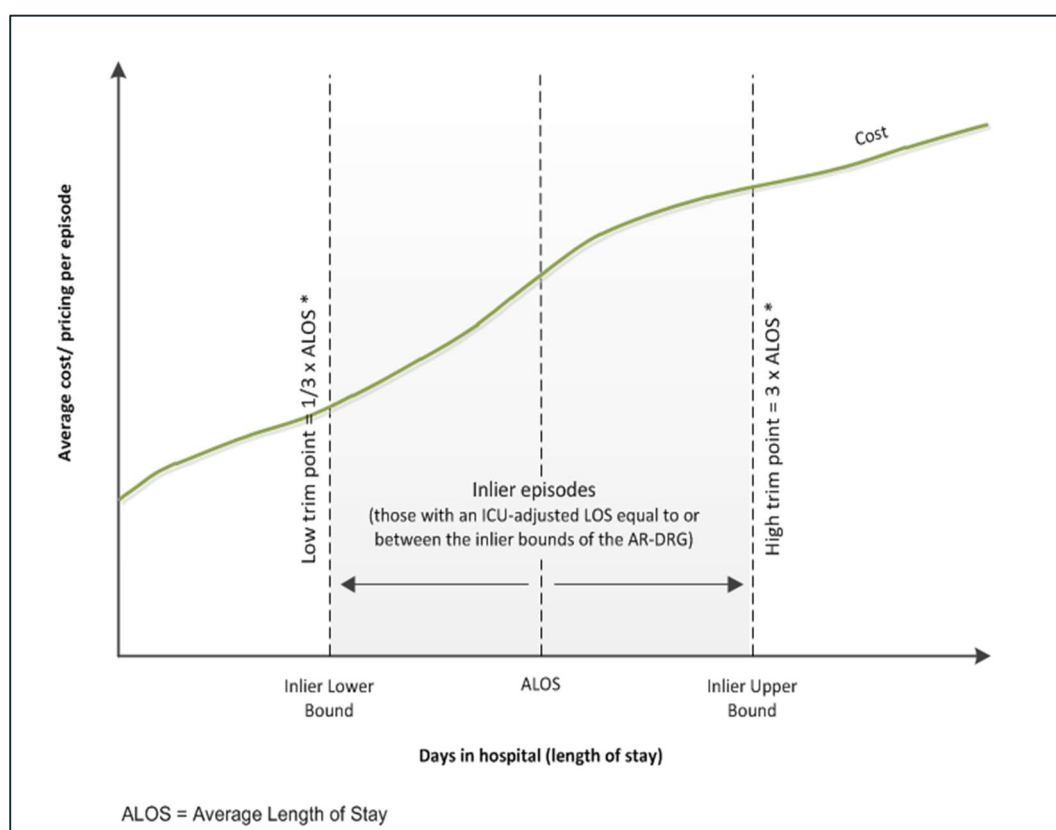
The resulting sample-to-population weights were used throughout all stages of the cost model development.

2.2.5 Inlier bounds

Admitted episodes with length of stay between one-third and three times the average length of stay for a particular AR-DRG are classed as inliers. This methodology is referred to as L3H3, and results in the vast majority of admitted episodes being classed as inliers.

The L3H3 method is applied to the population of in-scope activity from ABF establishments to identify inlier bounds outside of which are short-stay and long-stay outliers. This is illustrated in Figure 2. The method excludes same-day episodes occurring in AR-DRGs designated for a separate same-day payment, and uses length of stay adjusted to remove ICU days for ICU unbundled AR-DRGs.

Figure 2: Inlier bound calculations



The L1.5H1.5 method is used for 21 AR-DRGs that have very high cost long-stay outliers. The list of 21 AR-DRGs where the L1.5H1.5 method is used to determine the inlier bounds is provided in Appendix D: List of AR-DRGs adopting the L1.5 H1.5 methodology.

The steps for this process are:

- a. Calculate the national average length of stay for each AR-DRG.
- b. Calculate the inlier lower bound for each AR-DRG. This is based on the calculation: national average length of stay divided by three (1.5 for the 21 specified AR-DRGs). The inlier lower bound is equal to average length of stay divided by three.
- c. The result is then truncated. This means that it is rounded down to the next lowest integer (for example, if the result was 3.6, the inlier lower bound is set to three).
- d. Calculate the inlier upper bound for each AR-DRG. This is based on the calculation: national average length of stay multiplied by three (1.5 for the 21 specified AR-DRGs).
- e. The result was rounded to the nearest integer (for example, 10.2 would result in the upper bound being set to 10, whereas 10.7 would result in the upper bound being set to 11).
- f. Episodes with an ICU adjusted length of stay equal to or between the two inlier bounds of the AR-DRG are considered inlier episodes.

Further to the above process, changes to the inlier bounds from the 2020–21 cost model are monitored to ensure they are the result of real change and not due to ‘statistical noise’. To evaluate whether a change to an AR-DRG is considered significant or not, 95 per cent confidence intervals around bounds are used. Changes are also evaluated in terms of their materiality (required to affect at least one per cent of an AR-DRG’s separations and at least 10 separations). If the average length of stay of a particular end-class falls outside the inlier lower and upper bounds, then the changes in bounds will be implemented even if they do not meet the stability and materiality considerations above.

2.2.6 Classification of patient-level cost data in relevant categories

Prior to analysing costs, episodes are assigned to categories reflecting the relevant adjustments to be made through the 2020–21 cost model. The steps involved are:

- a. Assigning one of the following categories to each episode:
 - same-day separation from an AR-DRG on the designated same-day payment list
 - short-stay outlier
 - inlier
 - long-stay outlier.
- b. Flagging episodes that are eligible for the paediatric adjustment. These are episodes that:
 - Occur in establishments identified as delivering specialised paediatric services (listed in **Appendix E** of the National Efficient Price Determination 2023–24).
 - Have an AR-DRG which is not within MDC 15 (newborns and other neonates).
 - Have patient age at admission of 17 years or less.

- c. Flagging episodes that are eligible for the Indigenous adjustment. These are episodes with Indigenous status⁴ of Aboriginal and/or Torres Strait Islander origin.
- d. Flagging episodes that are eligible for the patient residential remoteness adjustment. These are episodes where the patient's place of usual residence has been assigned to a remoteness area⁵ of:
 - RA2 – outer regional Australia
 - RA3 – remote Australia
 - RA4 – very remote Australia.

Three flags are used: one for outer regional Australia, one for remote Australia and one for very remote Australia. The remoteness area of a patient's usual residence is determined using the following process:

- i) The patient's Australian Statistical Geography Standard (ASGS) Statistical Areas Level 2 (SA2) code is mapped to remoteness area.
- ii) If the supplied SA2 code is missing or invalid, the patient's postcode of usual residence is used.
- iii) If the postcode is missing or invalid, then the remoteness area of the hospital is used. The remoteness code of the hospital is based on the remoteness area of the Australian Bureau of Statistics (ABS) collection district within which the hospital is located.
- e. Flagging episodes that are eligible for the radiotherapy adjustment. These are episodes where the patient is eligible if they have recorded a radiotherapy-related procedure as defined in **Appendix B** of the National Efficient Price Determination 2023–24.
- f. Flagging episodes that are eligible for the dialysis adjustment. These are episodes outside the specified dialysis AR-DRGs L61Z and L68Z, and have recorded a dialysis-related procedure as defined in **Appendix C** of the National Efficient Price Determination 2023–24.
- g. Flagging episodes that are eligible for the patient treatment remoteness adjustment. These are episodes where the hospital of treatment has a remoteness area of:
 - RA3 – remote Australia
 - RA4 – very remote Australia.
- h. Flagging episodes that are eligible for the COVID-19 treatment adjustment. The first criteria are that in 2020-21 data, used in developing NEP23, these were episodes with diagnosis codes U07.1 and U07.2 under ICD-10-AM 11th edition. For 2023-24, under ICD-10-AM 12th edition, U07.12 and U07.2 apply instead. The second criterion is that the episodes have an AR-DRG that is listed in **Appendix P** of the National Efficient Price Determination 2023-24.
- i. Flagging episodes eligible for the ICU adjustment. These are episodes that occur in hospitals identified by IHACPA as eligible for ICU adjustment as defined in **Appendix D** of

⁴ See data element Indigenous status (METeOR identifier: 602543).

⁵ Remoteness areas are defined in the Australian Standard Geographic Standard (ASGS), which is maintained by the Australian Bureau of Statistics (see: www.abs.gov.au). The 2016 ASGS remoteness area classification was used to classify patients' place of residence and locality of hospitals.

the National Efficient Price Determination 2023–24 and have an AR-DRG not on the bundled ICU list (that is, not from MDC 15 for newborns and other neonates).

- j. Flagging private episodes. These are episodes with a funding source⁶ of '09 Private health insurance' or '13 self-funded'.
- k. Flagging hospital acquired complications (HACs) and avoidable hospital readmissions (AHRs). These are episodes that are identified as having a HAC and/or an AHR as specified by the Australian Commission on Safety and Quality in Health Care (ACSQHC) on their [website](#).

2.2.7 Determine ICU adjustment level and deduct associated costs

Patient-level cost data for episodes in hospitals with an eligible ICU or paediatric ICU (PICU) with ICU hours reported are analysed to estimate an average cost per ICU hour. The eligible ICUs and PICUs are those belonging to hospitals that report more than 24,000 ICU hours and have more than 20 per cent of those hours reported with the use of mechanical ventilation. The specified hospitals with eligible ICUs and/or PICUs are listed at **Appendix D** of the National Efficient Price Determination 2023–24. A total sample of 94,102 separations with ICU hours and costs from establishments with eligible ICUs/PICUs were used. For COVID-19 patients (flagged as per Appendix B in the variable row labelled A0), ICU hours in non-specified hospitals will be considered eligible.

Linear regression by state/territory was used to derive state/territory hourly ICU costs. Difference in Fits (DFFITS) statistics are used to exclude overly influential observations. The weighted mean of the hourly ICU costs taken across states was used to derive a national ICU rate of \$240 per hour.

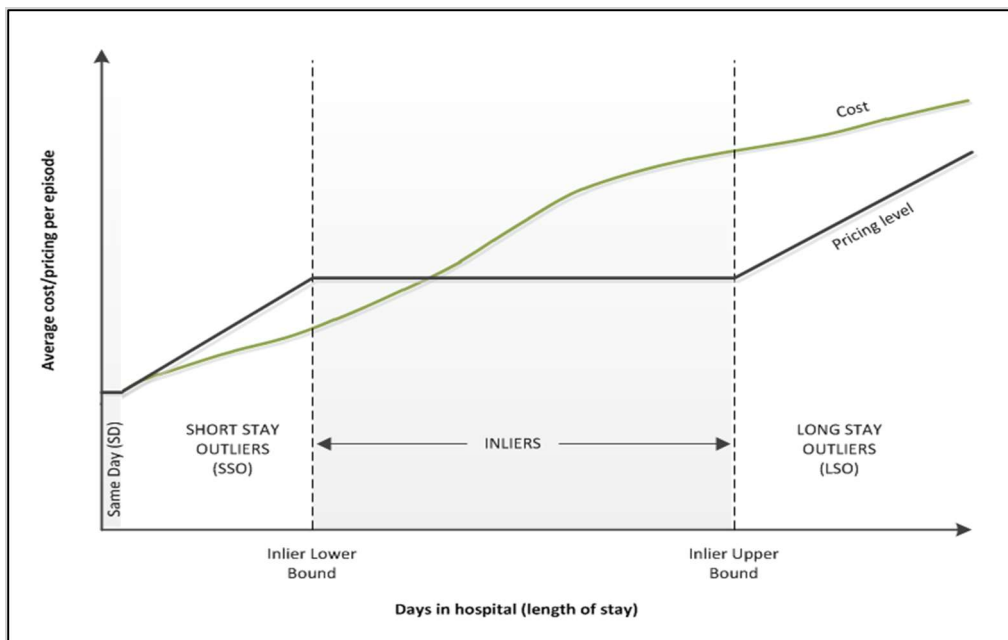
For ICU-eligible episodes, an ICU adjustment is calculated using the estimated ICU cost per hour and the reported number of whole ICU hours. This amount is deducted from the in-scope costs used for modelling the same-day payment AR-DRG, short-stay outlier, inlier and long-stay outlier costs and associated adjustments, but added back in for the ICU adjustment. Whole ICU days are also removed from each eligible episode's length of stay.

2.2.8 AR-DRG inlier/outlier model

Figure 3 illustrates the general form of the cost model within each AR-DRG. However, an AR-DRG's form may differ depending on whether it has a designated same-day separation category, a short-stay outlier category, or a long-stay outlier category.

⁶ For activity data before 2012–13 see data element 'Principal source of funding (funding source for hospital patient) (METeOR identifier: 339080), values: 01 Australian Health Care Agreements; 02 private health insurance; 10 Other hospital or public authority (contracted care); 11 reciprocal health care agreements (with other countries); 12 other.

Figure 3: Initial parameters for the assignment of cost weights



Initial parameters are derived for designated same-day payment AR-DRG episodes, short-stay outlier episodes, inlier episodes, and long-stay outlier episodes. The steps involved are as follows:

- a. Designated same-day AR-DRG episodes: calculate the mean cost per episode.
- b. Inlier episodes: calculate the mean cost per episode.
- c. Short-stay outlier episodes: calculate the base cost as the average of total operating room, special procedure suites and prosthesis costs, and then calculate the cost per diem to ensure an even growth in cost to that of the inlier episode.
- d. Long-stay outlier episodes: the mean inlier cost is assigned to each episode as a base amount. A per diem for each outlier day is calculated using one of two methods:
 - In AR-DRGs where the length of stay profile is adequately wide enough and regular to allow robust regression analysis to be undertaken, the per diem cost is taken as the LOS regression coefficient; this process excludes designated same-day episodes and overly influential observations (as determined by the DFFITS statistical measure).
 - In the remaining AR-DRGs, cost buckets are partitioned into 'fixed' and 'variable' (similar to the short-stay outlier process for surgical AR-DRGs), and the per diem cost is taken as the mean variable cost per patient day.

Where there are fewer than 100 separations in an AR-DRG, 2020–21 separations are combined with those from 2019–20, and indexed appropriately to calculate the cost parameter. All AR-DRG parameters are then uniformly calibrated to ensure the modelled costs are equalised against actual costs.

2.2.9 Calculation of additional adjustments

After the AR-DRG inlier/outlier model is derived, the following six sets of adjustments are calculated based on factors considered to have a material impact on the cost of acute services.

Paediatric adjustment

A paediatric adjustment is derived by AR-DRG. Specialised paediatric patients are identified as being less than or equal to 17 years of age, from an establishment identified as delivering specialised paediatric services (listed in **Appendix E** of the National Efficient Price Determination 2023–24 as specialised children's hospitals), and excluding AR-DRGs from MDC 15 (newborns and other neonates).

The paediatric adjustment for each AR-DRG is:

- a. Rounded to the nearest whole per cent.
- b. Capped and floored at 2.0 and 0.8 respectively.
- c. Set to one (that is, no adjustment) if the adjustment is less than 0.05 either side of one.

Further to this, the paediatric adjustment for the 2020–21 cost model is compared against that of the 2019–20 cost model and changes are stabilised for AR-DRGs where either of the cost data samples (that is, paediatric or non-paediatric) contain fewer than 500 observations. This stabilisation involves taking the average adjustment across the two years. The paediatric adjustments of the two years must also both be either above or below one, unless the previous year was one or missing.

The cost parameters of each AR-DRG are then calibrated to ensure that the modelled costs, with paediatric adjustment applied, are equal to the actual costs of the AR-DRG.

Indigenous adjustment and patient residential remoteness adjustment

These adjustments are derived by the following process:

- a. The remoteness value for each episode is derived from an episode's available geographical information in the following order of preference: SA2, postcode, or the hospital geographical indicator variable.
- b. A multivariate least squares weighted regression model is used to estimate the extent to which the variation in the mean cost per weighted episode is explained by each adjustment factor: Indigenous status, residential remoteness area, and radiotherapy and dialysis status.
- c. Episodes are weighted to control the level to which the model already explains costs (that is, through the AR-DRG inlier/outlier model together with the paediatric adjustments). The coefficients estimated from this model indicate the extent to which each factor explains residual variation in costs.
- d. The analysis yields an adjustment value for each of the adjustment categories.
- e. The Indigenous adjustment taken as the cost-weighted mean of empirical adjustments taken from the admitted acute calculation above, and similar calculations applied to admitted subacute and non-acute, emergency care, and non-admitted code data.
- f. The adjustments are additive where more than one adjustment applies, for example, where an Indigenous patient resides in a remote area, an adjustment equal to the addition of the Indigenous and remoteness adjustments is applicable.

Radiotherapy and dialysis adjustment

The dialysis adjustment is derived in the same way and at the same time as the Indigenous and remoteness adjustments, as described above.

Together with the radiotherapy adjustment, the adjustments compensate for the extra costs of dialysis-related and radiotherapy-related procedures, as specified in **Appendix B** and **Appendix C** of the National Efficient Price Determination 2023–24. These two adjustments are additive with the Indigenous and remoteness adjustments.

Patient treatment remoteness adjustment

The patient treatment remoteness adjustment was introduced in the NEP18 Determination. It is derived using the same methodology as the residential remoteness adjustment, and is designed to explain the residual variation in cost after the other adjustments have been applied. The analysis yields an adjustment for remote and very remote treatment locations.

COVID-19 treatment adjustment

The Coronavirus disease 2019 (COVID-19) treatment adjustment was introduced in the NEP23 Determination. It is derived using the same approach as the radiotherapy adjustment, and is designed to explain the residual variation in cost after the other adjustments have been applied for 11 AR-DRGs as specified in **Appendix P** of the National Efficient Price Determination 2023–24.

AR-DRG cost parameters are then uniformly calibrated to ensure cost neutrality of the model (including Indigenous, remoteness, radiotherapy, dialysis adjustments and COVID-19 treatment) against actual costs.

2.2.10 Private patient adjustments

Further adjustments are applied to private patients to account for the private benefit received from the Medicare Benefits Schedule (MBS) and private insurers. These adjustments cover the service and accommodation of private patients.

Private patient service adjustment

The HCP data provides a more accurate amount of benefits received from MBS and private insurers for medical hospital services and prostheses than provided by the NHCDC. These benefits are used to calculate the private patient service adjustment. The adjustment is calculated at the AR-DRG level for each jurisdiction, although for some AR-DRGs with small samples, the adjustment is derived at a more aggregate level. In the absence of data for a particular state or territory, a national value is used.

The following ratio was taken at the jurisdictional AR-DRG level:

Private patient service adjustment (A_{PPS}) = removed costs / total AR-DRG model costs

It should be noted that the AR-DRG model costs referred to in this document exclude the application of any other adjustments. That is, the private patient service adjustment (A_{PPS}) is calculated in such a way that it excludes any effect on the paediatric, Indigenous, remoteness, and radiotherapy or dialysis adjustments.

The AR-DRG cost parameters are then uniformly calibrated to ensure cost neutrality of the cost model (including the private patient service adjustment and previously derived adjustments) against actual costs.

Private patient accommodation adjustment

In addition to medical and prostheses costs, insurers are also charged for accommodation. A private patient accommodation adjustment (A_{ACC}) is applied to account for revenue received in relation to these charges. For the purpose of deriving the adjustment associated with NEP23, 2022–23 average default benefits for private health insurers by state/territory are indexed forward

one year by 4.80 per cent (that is, by the Consumer Price Index as required by legislation) to 2023–24.

2.2.11 Funding adjustment for HACs

The Addendum to the NHRA, signed in March 2017, required IHACPA to develop an approach for funding episodes which have a HAC for implementation by 1 July 2018. IHACPA developed an additional adjustment to account for a HAC episode included in the calculation of NWAU and is included in the NWAU calculation formula, see Section 2.3.

A detailed explanation of the funding adjustment can be found in the accompanying document 'National Pricing Model Risk adjustments for hospital acquired complications – Technical Specifications 2023-24' on the IHACPA website.

Funding adjustments for HACs are not applicable for COVID-19 patients flagged as per Appendix B in the variable row labelled A0.

2.2.12 Funding adjustment for AHR

The Addendum to the NHRA, signed in May 2020, required IHACPA to develop an approach for funding episodes which have a AHR, ready for implementation from 1 July 2021. IHACPA has developed an adjustment for episodes that result in an AHR.

A detailed explanation of the funding adjustment can be found in the accompanying document 'National Pricing Model Risk adjustments for avoidable hospital readmissions – Technical Specifications 2023-24' on the IHACPA website.

Funding adjustments for AHRs are not applicable for COVID-19 patients flagged as per Appendix B in the variable row labelled A0.

2.2.13 Incorporation of outlier samples of cost data

The development of the cost model to this point is based on the sample of patient-level cost data evaluated as fit for use to develop AR-DRG cost profiles. Thus, the sample of patient-level cost data identified as not fit for use at the AR-DRG level have not been used within the cost model.

The following process is used to calibrate the cost model against the entire sample of cost data:

- a. The cost model developed to this point, including all adjustments (except the private patient adjustments) is applied to the entire cost data sample. This process results in model costs across the entire sample of cost data.
- b. The AR-DRG cost parameters are then uniformly adjusted to ensure the resulting total modelled cost across the entire sample is equalised against the total actual costs of the entire sample.

It should be noted again that sample-to-population weights are used throughout all stages in the development of the cost model.

2.2.14 Account for COVID-19 in the admitted acute cost model

The 2020–21 data used to set the NEP23 includes activity and cost data collected at the early stages of the COVID-19 pandemic. Following extensive analysis admitted acute data was noted to differ from expectations in a substantial manner for part of the 2020-21 year within a single jurisdiction. Consequently, admitted acute price weights for NEP23 include an adjustment to prospectively account for the impact of COVID-19.

The 2020–21 admitted acute cost model was adjusted in order to calculate the reference cost in three stages:

- a. Calculate the expected cost for Victoria in 2020-21, net of COVID-19 impact.
- b. Normalise Victoria's activity during the August-October lockdown event in 2020-21, so it is in line with activity levels throughout the rest of the 2020-21 year.
- c. Inflate costs to incorporate additional variable costs for some normalised activity.

For part (a), historical cost models from previous NEP Determinations were applied to 2020-21 activity data, and the expected growth was determined using an exponential regression model, similar to that used for the indexation rate calculation discussed in Section 7.4. This gives an expected growth rate of 2.8 per cent. This results in a uniform recalibration of the 2020–21 cost model of 0.97415.

For part (b), the activity from 1 August 2020 to 30 October 2020 is inflated by a factor of 1.118, effectively adding additional activity to the model. The weight is calculated such that Victoria's total growth in weighted admitted acute activity between 2019-20 and 2020-21 is equal to growth between non-lockdown periods between the two years. The normalised activity level for Victoria through 2020-21 is then 4.8 per cent below the expected activity levels based on historical (pre-COVID-19) activity forecasts. This adds approximately 39k GWAU to the model.

Based on the assumptions listed in the National Efficient Price Determination 2023-24, it is assumed that out of 39k of added GWAU, the costs for 27k GWAU are already accounted for in the NHCDC due to the National Partnership on COVID-19 Response minimum funding guarantee. This leaves a further 12k GWAU for which costs should be adjusted.

In part (c), actual costs are inflated by \$11.7 million to account for variable costs for the remaining 12k of normalised GWAU. The variable costs component is based on the non-labour costs, such as the direct cost component of pathology, imaging, prostheses, medical and surgical supplies, other goods and services, non-PBS pharmacy and hotel line items in the NHCDC. This cost normalisation process effectively recalibrated the 2020-21 cost model by a factor of 1.019622.

In total, the empirical 2020–21 cost parameters are recalibrated by a factor of 0.99327 to account for both decreased activity reporting and an estimated increase in input costs that are expected to be ongoing in 2023–24.

2.2.15 Price weights and NWAU

The final step in the process involves the conversion of the 2020–21 cost model parameters to cost weight values by dividing the cost parameters by a reference cost.

The reference cost used was the 2019–20 reference cost indexed one year by the growth rate in the consecutive years' cost models, where this growth rate is standardised against the 2020–21 activity data. Specifically, the standardised growth rate was derived by applying the 2019–20 and 2020–21 cost models (excluding private patient adjustments) to the 2020–21 activity data, and calculating the change in total modelled costs between the two models.

For NEP23, the standardised growth rate calculation follows the same methodology used to calculate the 2019–20 reference cost from the 2018–19 reference cost.

The resulting cost weights are then converted to the price weights that are used to assign NWAU, as explained further in Section 7.

2.2.16 Stabilisation of acute weights

The National pricing model stability policy (the Stability policy) states that inlier price weight movements between years will be capped to ± 20 per cent for AR-DRGs deemed comparable between years where the impact will be minimal.

Stabilisation of inlier weights is done simultaneously. An adjustment factor is calculated for each cost parameter so that the associated price weight is ± 20 per cent of the previous year's price weight.

This adjustment factor is then applied to the same-day, short-stay base, and short-stay outlier per diem weights if they exist. Long-stay outlier per-diem weights are not scaled in this way in order to avoid potential unintended extreme cost ratios for very long-stay outliers. The entire cost model is then recalibrated to ensure that the total actual costs and the total modelled costs are equal across the entire sample.

For NEP23, one admitted acute end-class, F23Z *Heart Transplantation* was not stabilised following advice that costs were likely driven by COVID-19 related changes to the model and cost of care.

2.3 Applying the NEP

The price of an ABF activity is calculated using the following formula, with adjustments applied as applicable:

Price of an admitted acute ABF activity

$$= ([PW \times A_{Paed} \times (1 + A_{Res} + A_{Ind} + A_{RT} + A_{Dia}) \times (1 + A_{Treat}) \times (1 + A_{C19}) + (A_{ICU} \times ICU \text{ hours})] - [(PW + A_{ICU} \times ICU \text{ hours}) \times A_{PPS} + LOS \times A_{Acc}]) - PW \times A_{HAC} - PW_{AHR} \times A_{AHR}) \times NEP$$

Where:

A_{Paed}	means the paediatric adjustment
A_{Res}	means each or any patient residential remoteness area adjustment
A_{Ind}	means the Indigenous adjustment
A_{RT}	means the radiotherapy adjustment
A_{Dia}	means the dialysis adjustment
A_{Treat}	means each or any patient treatment remoteness area adjustment
A_{C19}	means the COVID-19 treatment adjustment
A_{ICU}	means the intensive care unit (ICU) adjustment
A_{PPS}	means the private patient service adjustment
A_{Acc}	means the private patient accommodation adjustment applicable to the state of hospitalisation and length of stay
A_{HAC}	means the hospital acquired complications adjustment factor
A_{AHR}	means the avoidable hospital readmission risk adjustment factor
ICU hours	means the number of hours spent by a person within a specified ICU
LOS	means length of stay in hospital (in days)
NEP	means National Efficient Price 2023–24
PW	means the price weight for an ABF activity as set out at Appendix H of the National Efficient Price Determination 2023–24

PW_{AHR} price weight for an ABF activity of a linked avoidable hospital readmission.

In the event that the application of the private patient adjustments return a negative NWAU(23) value for a particular patient, the NWAU(23) value is held to be zero; that is, negative NWAU(23) values are not permitted for any patients under the national pricing model.

Table 2 and Table 3 outline the information required to apply the above formula.

Table 2: Dataset and tables required for assignment of NWAU to admitted acute patient data

Input dataset or table	Description
APC NMDS	Dataset based on the 2020–21 Admitted Patient Care National Minimum Data Set (APC NMDS).
ICU Rate and Paediatric Adjustment eligibility table	Table listing establishments with an eligible ICU or PICU, found in the National Efficient Price Determination 2023–24 and Glossary.
Postcode table	Table of postcodes mapped to the 2016 ASGS Remoteness Area classification. Each postcode is mapped to the Remoteness Area category within which the majority of the postcode's population resides. PO Box postcodes are mapped to the Remoteness Area category within which the Post Office is located.
ASGS table	Table of Australian Statistical Geography Standard (ASGS) mapped to the Remoteness Area category within which the majority of the ASGS's population resides.
2023–24 NWAU Price weight table	2023–24 Admitted acute NWAU Price weight table, found in the National Efficient Price Determination 2023–24.
2023–24 NWAU Adjustments	2023–24 Admitted acute NWAU Adjustments, found in the National Efficient Price Determination 2023–24.

Table 3: APC NMDS variables used to calculate 2023–24 admitted acute NWAU.

APC NMDS Variable
State identifier
Establishment identifier
Hospital geographical indicator
Sex
Date of birth
Date of admission
Date of separation
Care type

APC NMDS Variable
Admission mode
Admission urgency status
Number of qualified days for newborns
Total psychiatric care days
Indigenous status
Funding source ⁷
Australian refined diagnosis related group v11.0
Total leave days
Total Hours spent in intensive care unit
Postcode of patient's usual residence
Australian Statistical Geography Standard (ASGS) of patient's usual residence
Either the identifier signifying radiotherapy treatment or the list of patient's ICD-10-AM procedure codes.
Either the identifier signifying dialysis or the list of patient's ICD-10-AM procedure codes.
Either the identifier signifying COVID-19 treatment or the list of patient's ICD-10-AM procedure codes.
The list of patient's ICD-10-AM codes, including diagnoses and condition onset flags.

⁷ Data Element Concept Episode of care—source of funding (METeOR identifier: 472038)

3. Mental health care cost model

3.1 General issues

3.1.1 Cost unit

A 'mental health phase of care'⁸ is the cost unit for mental health patients. A phase of care is 'a distinct clinical period which reflects the goal of treatment of mental illness.' It 'begins either when a patient commences an episode of mental health care (MHC) or when the primary goal of care changes in an existing MHC episode'⁹ and 'ends either when a patient concludes an episode of MHC or when the primary goal of care changes in an existing mental health care episode.'¹⁰

3.1.2 In-scope activity

Mental health admitted care is that provided to patients who undergo a facility's formal admission¹¹ processes.

MHC activity is submitted under the ABF MHC NBEDS, which considers MHC activity across admitted, emergency, ambulatory and residential settings as in-scope. Therefore, in-scope admitted MHC activity is identified by a service setting variable supplied by jurisdictions, according to IHACPA's data request specifications.¹² If service setting is missing, a phase is determined to be admitted care if it is able to be linked to an admitted patient care episode and/or it has a non-missing admitted service unit identifier.

Mental health patients receiving emergency department and non-admitted care services are not differentiated in NEP23 and so receive payments as defined for the relevant ABF product category.

3.1.3 Classification

The Australian Mental Health Care Classification (AMHCC) is used to classify admitted mental health care patients. The version that applies for funding in 2023—24 is AMHCC Version 1.0.

3.2 Analysis of costs to derive NWAU for mental health care

3.2.1 Data sources

The activity data collection that informs the NEP23 mental health cost model is the Activity Based Funding: Mental Health Care National Best Endeavours Data Set (ABF MHC NBEDS) for 2020—21. For admitted mental health care, data is reported by states and territories at two levels:

- Episode of mental health care – supplied to IHACPA in the ABF Mental Health Care Episode (MHCE) file.

⁸ See object class Mental health phase of care (METeOR identifier: 730867).

⁹ See data element Mental health phase of care start date (METeOR identifier 575257).

¹⁰ See data element Mental health phase of care end date (METeOR identifier 575251).

¹¹ See glossary item Admission (METeOR identifier: 327206).

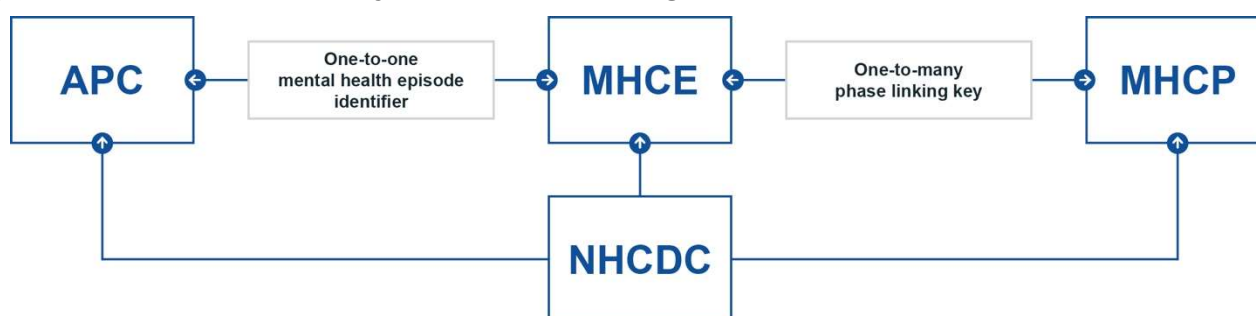
¹² IHACPA ABF MHC Specifications 2018–19 Version 1.0

- Mental health phase of care – supplied to IHACPA in the ABF Mental Health Care Phase (MHCP) file.

This is used in combination with care type¹³ 11 *Mental health care* data from the 2020—21 APC NMDS, which also provides episode-level data including funding source and mental health legal status.

Cost data is reported through Round 25 (2020—21) of the NHCDC, which may be reported by states and territories at either the phase level (preferred) or the episode level. Linkage between activity and cost data sets is illustrated in Figure 4.

Figure 4: Mental health activity and cost data linkage



3.2.2 Data preparation

After data linkage, a range of steps were undertaken to prepare the data for input to the cost model:

- Where the same variables are present across both files, variables are condensed to a single field, generally giving preference to the APC data (as this is a more mature data set). For example, a non-missing value for Indigenous status from the APC data is used in preference to the value from the MHCE data set.
- Phase dates are cleaned such that:
 - If phase start date is missing but phase end date is not missing, and if the episode admission date is less than or equal to the phase end date, then the phase start date is set equal to the episode admission date.
 - If phase end date is missing but phase start date is not missing, and if the episode separation date is greater than or equal to the phase start date, then the phase end date is set equal to the episode separation date.
 - If both phase start and end dates are missing then the episode admission and discharge dates are adopted. This means that episodes that are not linked to phase data are considered phases with unknown phase type.
- Age is recalculated based on the cleaned phase dates, thereby preferencing patient age at the start of the phase and otherwise using the age at episode start.
- The AMHCC v1.0 grouper is then re-applied to the data, in order to get the most accurate grouping based on the linked data, followed by linkage of remoteness variables as per the admitted acute model.
- Blood and PBS costs are removed from patient costs.

To refine the data to be used for modelling, steps are then taken to trim the data, as outlined in Table 4.

¹³ See data element Hospital service – care type (METeOR identifier 711010)

Table 4: Number of episodes trimmed at each data preparation stage

Trimming stage		Records
(a) Initial activity-level sample of admitted mental health records		155,150
(b) Initial activity-level cost sample of admitted mental health records		119,668
Less – Total trimmed episodes		-12,937
	(c) Phases records with non-unique or non-phase-level costs	-8,893
	(f) Work in progress (phase start prior to 1 July 2019)	-63
	(g) Error phase dates/phase length	-3,269
	(h) Patient level cost data trimmed under jurisdictional advice	-170
	(i) Phases from hospital-AMHCC combinations with extremely high or low cost-to-price ratios	-7
	(j) Removal of records with total in-scope costs < \$15	-12
	(k) Observations with extreme outlier costs	-2
	(l) Extremely high or low cost ratios removed after deriving the preliminary regression model	-521
(m) Resulting sample size of phases used to create AMHCC cost profiles		106,731

3.2.3 Private patient costs

As in the admitted acute care cost model (Section 2.2.3), HCP data is used to correct for the missing private patient costs in the NHCDC, as well as for subsequent estimates of private patient service adjustments.

A total of 54 per cent of phases with a private insurance funding source were able to be matched to benefits in the HCP dataset, with the remaining unmatched records assumed to have similar characteristics to the matched dataset. A correction factor was then calculated at the jurisdiction level to estimate and account for the amount of private patient costs not included in NHCDC.

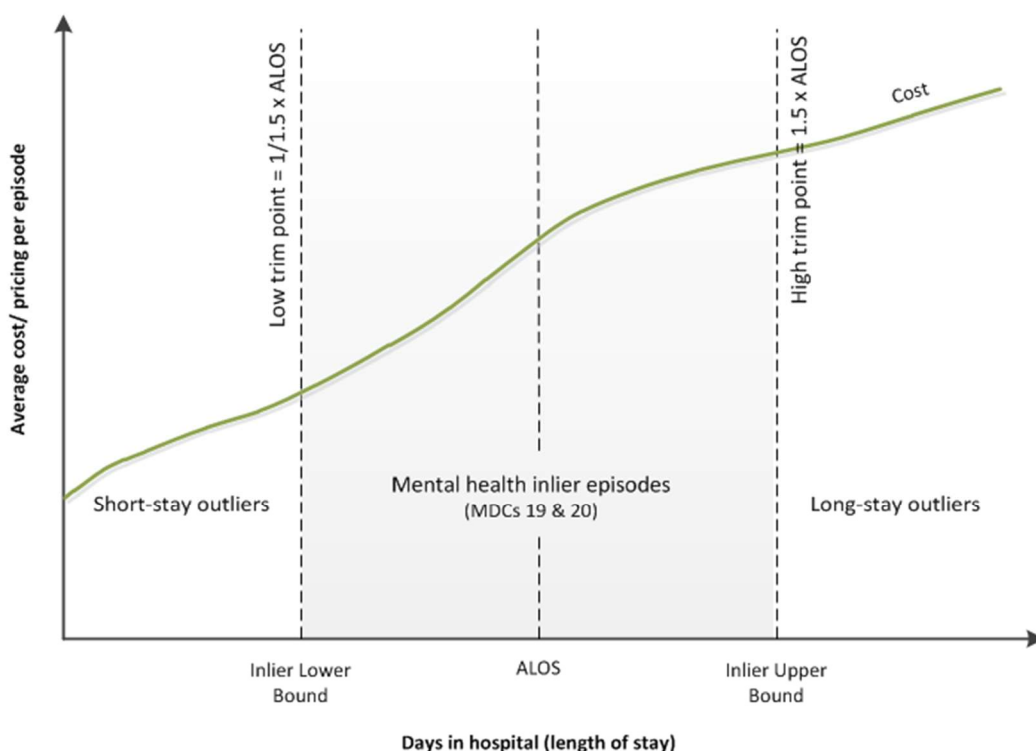
3.2.4 Inlier bounds

Inlier bounds for admitted AMHCC classes are calculated similarly to the way they are calculated for AR-DRGs in the admitted acute cost model.

With the exception of combined classes 131 and 141 (where the A, B and Z complexity categories are grouped for modelling), the inlier bounds for admitted AMHCC classes were set using the L1.5H1.5¹⁴ trimming method, as shown in Figure 5. This is in line with the previous trimming method applied to major diagnostic categories 19 and 20 when admitted mental health was costed under the AR-DRG cost model, because the narrower bounds generated a lower proportion of inliers and higher proportion of short-stay and long-stay outliers. For combined AMHCC classes with fewer than 50 observations, a per diem model is adopted instead of the inlier/outlier model. Hence, the inlier bounds are not applicable for these classes. This applies to combined classes 131 and 141.

Inlier lower bounds are truncated while inlier upper bounds are rounded to the nearest integer, as per the admitted acute model (Section 2.2.5). Phases with a length of stay equal to or between the two inlier bounds of the AMHCC are considered inlier phases.

Figure 5: Inlier bound calculations for mental health using the L1.5H1.5 trimming method



Inlier bounds are subject to the same stabilisation methodology as that which is applied to AR-DRG classes in the admitted acute cost model. If the 95 per cent confidence interval around each NEP23 AMHCC inlier bound does not contain the corresponding NEP22 AMHCC inlier bound, movements are evaluated for materiality. If movements impact the separation category of at least 1 per cent of separations and at least 10 separations in the AMHCC class, the inlier bound is stabilised to the corresponding NEP22 inlier bound. If the average length of stay of a particular end-class falls outside the previous NEP22 inlier lower and upper bounds, then the changes in bounds will be implemented even if they do not meet the stability and materiality considerations above.

¹⁴ L1.5H1.5 refers to the trimming method in which the low trim point is the average length of stay (ALOS) divided by 1.5, and the high trim point is 1.5 times the ALOS.

3.2.5 Stratification and weighting

The sample of admitted AMHCC classified data is weighted to account for the fact that it excludes all activity with an admission date prior to 1 July 2019.

3.2.6 Cost parameters

The cost parameters of the admitted AMHCC inlier/outlier model are calculated in the same way as those for AR-DRGs, with the exception of:

- The use of inlier bounds defined by L1.5H1.5 instead of L3H3.
- Modelling the short-stay outlier base as the intercept of a per diem model instead of modelling 'same day' fixed costs explicitly. It is assumed the short-stay outlier base is the cost of a phase when the patient is admitted and discharged on the same date. For the 2020—21 cost model, the short-stay outlier base was modified for one AMHCC class, 101Z, where for this class it was derived as the mean cost of same day phases.
- Modelling costs for grouped AMHCC classes where data is sparse and/or the relationship between Moderate and High HoNOS complexity is counterintuitive, such as when a Moderate complexity class has higher modelled costs than High complexity. For the 2020-21 model, this applies to 121B and 121Z, 131, 132B and 132Z, 133, 141 and 143B and 143Z.
- The use of a per diem model for combined AMHCC classes 131 and 141, where same-day phases receive a short-stay outlier base price, plus a long-stay outlier per diem for overnight admissions.
- Capping Unknown HoNOS class inlier cost parameters such that they do not exceed the inlier cost for the corresponding Moderate HoNOS class. For the 2020—21 model, this applies to 1121Z, 1122Z, 122Z, 123Z and 142Z. This ensures there is no disincentive to reporting HoNOS data.

3.2.7 Adjustments

A single paediatric adjustment is derived using a univariate least squares weighted regression model. This is used to estimate the extent to which the variation in the mean cost per weighted phase is explained by specialised paediatric status.

Specialised paediatric patients are identified as being less than or equal to 17 years of age and admitted at an establishment identified as delivering specialised paediatric services (listed in **Appendix E** of the National Efficient Price Determination 2023-24).

Episodes are weighted to control the level to which the inlier/outlier model already explains costs. The coefficient estimated from this model indicates the extent to which specialised paediatric status explains residual variation in costs and is used to calculate an adjustment value to account for this.

A number of other adjustments, calculated by the admitted acute model, are also applied to admitted mental health patients. The relevant adjustments applied are the:

- Patient residential remoteness area adjustment
- Indigenous adjustment
- Patient treatment remoteness area adjustment

The private patient service adjustment is calculated by AMHCC class and jurisdiction using the same methodology used in the admitted acute cost model. The derivation of the private patient accommodation adjustment is outlined in Section 2.2.10.

The proportion of cost model data for which the adjustments apply are as follows:

- Paediatric adjustment: 9.6 per cent
- Patient residential remoteness area adjustment: 10.7 per cent
- Indigenous adjustment: 10.2 per cent
- Patient treatment remoteness area adjustment: 1.0 per cent
- Private patient adjustments: 7.1 per cent.

Following the application of these adjustments (excluding the private patient adjustments), the cost parameters are uniformly adjusted to ensure the resulting total modelled cost is equalised against the total actual costs.

3.2.8 Admitted mental health care stabilisation

IHACPA's Stability Policy has been applied to limit the change in price weights of each AMHCC class between NEP22 and NEP23. This policy applies to every AMHCC class with the same inlier bounds in NEP22 and NEP23 and for which fewer than inlier 1,000 separations were used in the admitted mental health care cost model. Where these conditions are met, price weights are adjusted to be within 20 per cent of the price weight for that class in NEP22.

Refer to Section 2.2.16 for information about the stabilisation process.

3.2.9 Price weights and NWAU

Price weights are obtained by dividing the dollar-valued cost parameters by the reference cost (derived in the admitted acute cost model). These price weights are used to assign NWAU, as explained further in Section 7.

3.2.10 Apply the NEP

The price of an ABF activity is calculated using the following formula, with adjustments applied as applicable:

Price of an admitted mental health ABF activity

$$= \{ [PW \times A_{Paed} \times (1 + A_{Res} + A_{Ind}) \times (1 + A_{Treat})] - [PW \times A_{PPS} + LOS \times A_{Acc}] \} \times NEP$$

Where:

A_{Paed}	means the paediatric adjustment
A_{Res}	means each or any patient residential remoteness area adjustment
A_{Ind}	means the Indigenous adjustment
A_{Treat}	means each or any patient treatment remoteness area adjustment
A_{PPS}	means the private patient service adjustment
A_{Acc}	means the private patient accommodation adjustment applicable to the state of hospitalisation and length of stay
LOS	means the length of stay in hospital (in days) for the phase of care
NEP	means National Efficient Price 2023–24
PW	means the price weight for an ABF activity as set out at Appendix J of the National Efficient Price Determination 2023–24

In the event that the application of the private patient adjustments return a negative NWAU(23) value for a particular patient then an NWAU(23) of zero is assigned to that patient.

Table 5 and Table 6 outline the information required to apply the above formula.

Table 5: Datasets and tables used for assignment of NWAU to admitted mental health patient data

Input dataset or table	Description
MHC NBEDS	Dataset based on the 2020-21 Activity based funding: Mental health care National Best Endeavours Data Set (MHC NBEDS).
APC NMDS	Dataset based on the 2020-21 Admitted Patient Care National Minimum Data Set (APC NMDS).
Paediatric Adjustment eligibility table	Table listing eligible specialised children's hospitals, found in the National Efficient Price Determination 2023-24 and Glossary.
Postcode table	Table of postcodes mapped to the 2016 ASGS Remoteness Area classification. Each postcode is mapped to the Remoteness Area category within which the majority of the postcode's population resides. PO Box postcodes are mapped to the Remoteness Area category within which the Post Office is located.
ASGS table	Table of Australian Statistical Geography Standard (ASGS) mapped to the Remoteness Area category within which the majority of the ASGS's population resides.
2023-24 NWAU price weight table	2023-24 Admitted mental health NWAU Price weight table, found in the National Efficient Price Determination 2023-24.
2023-24 Admitted Acute NWAU Adjustments	2023-24 Admitted acute NWAU Adjustments, found in the National Efficient Price Determination 2023-24.

Table 6: Phase level variables (based on MHC NBEDS and APC NMDS variables) used to calculate 2023-24 admitted mental health NWAU

MHC NBEDS and APC NMDS variables
State identifier
Establishment identifier
Hospital geographical indicator
Date of birth
Phase start date
Phase end date
Indigenous status
Mental health legal status

MHC NBEDS and APC NMDS variables
Funding source ¹⁵
AMHCC class
Total leave days
Postcode of patient's usual residence
Australian Statistical Geography Standard (ASGS) of patient's usual residence

¹⁵ Data Element Concept Episode of care—source of funding (METeOR identifier: 472038)

4. Admitted subacute and non-acute care cost model

4.1 General issues

4.1.1 General issues cost unit

An ‘episode of admitted patient care’¹⁶ is the cost unit for admitted subacute and non-acute patients. It is ‘the period of admitted patient care... characterised by only one care type’¹⁷, and covers the period of care from admission to separation.

4.1.2 In-scope activity

Admitted subacute and non-acute care is that provided to patients who undergo a facility’s formal admission¹⁸ process, where the clinical intent or treatment goal is the provision of subacute or non-acute care.

In-scope hospitals and patients are defined the same way as admitted acute patients, except that the patients are admitted into a care type for subacute or non-acute care.

4.1.3 Classification

Version 4.0 of the Australian National Subacute and Non-Acute Patient Classification (AN-SNAP) is used to classify admitted subacute and non-acute care. Where data required to assign an AN-SNAP classification is not available, the episodes are moved into the admitted acute care cost model. Episodes without a valid AN-SNAP end class are transferred to the admitted acute care model and priced according to their AR-DRG classification.

4.2 Analysis of costs to derive NWAU for subacute and non-acute admitted care

The following steps are taken in developing the cost parameters and weights for admitted subacute and non-acute care:

- a. Data preparation.
- b. Develop sample-to-population weights.
- c. Classify AN-SNAP episodes into relevant categories: inliers, short-stay and long-stay outliers using the ABF L1.5H1.5 methodology.
- d. Apply Indigenous, radiotherapy, dialysis, and remoteness adjustments inherited from the admitted acute care cost model.
- e. Derive private patient service adjustments for each care type and jurisdiction.

These steps are described in more detail in the following sections.

¹⁶ See object class ‘episode of admitted patient care’ (METeOR identifier: 268956).

¹⁷ Ibid.

¹⁸ See glossary item ‘admission’ (METeOR identifier: 327206).

4.2.1 Data preparation

The 2020–21 admitted subacute and non-acute cost sample consists of the following groups in Table 6.

Table 6: Admitted subacute cost sample breakdown

Group	Establishments	Total records	Total days
Total National Hospital Cost Data Collection (NHCDC) sample	243	201,395	2,501,148
AN-SNAP classified data	255	196,848	2,450,504

The costs of care associated with other Commonwealth programs for blood costs and pharmaceuticals are removed from NHCDC costs in the same manner described for the admitted acute model in Section 2.2. When costs are reported at the episode level but must be deducted from the reported cost of multiple phases of a palliative care episode, deductions are attributed to each phase according to the proportion of pre-deduction in-scope costs accrued at that phase.

As in the admitted acute care cost model, HCP data is used to correct for the missing private patient costs in the NHCDC, as well as for subsequent estimates of private patient service adjustments (see Section 2.2.10).

The data is trimmed for extreme outliers using similar methodology to the admitted acute care cost model. The following data was not used to derive the AN-SNAP Version 4.0 cost profiles:

- Records that had an in-scope cost of \$0.
- Records with an error AN-SNAP Version 4.0 class.
- Records pertaining to persons under the age of 18 with an AN-SNAP Version 4.0 class within either Psychogeriatric Care or Geriatric Evaluation and Management care types.
- Records pertaining to persons under the age of 18 with an AN-SNAP Version 4.0 class that does not correspond to a paediatric AN-SNAP Version 4.0 class.
- Records that had not been assigned an AN-SNAP Version 4.0 class.
- Extreme cost outliers within an AN-SNAP Version 4.0 class.

4.2.2 Stratification and weighting

The sample of AN-SNAP classified data is weighted to account for the fact that the used sample excludes all activity with an admission date prior to 1 July 2019.

4.2.3 Inlier Bounds

Inlier bounds for each AN-SNAP Version 4.0 class, other than same-day classes, are determined using the L1.5H1.5 methodology described in Section 2.2.5. The inlier bounds of each AN-SNAP Version 4.0 class are subject to the same stabilisation methodology as that which is applied to AR-DRG classes in the admitted acute model. This process limits the degree to which inlier bounds are liable to change as a result of statistical noise. This policy dictates that if the inlier lower bound in NEP22 is within a 95 per cent confidence interval (with respect to a normal distribution) of the lower bound calculated for NEP23 then the lower bound in NEP22 is also used in NEP23. The same rule is applied to the inlier upper bound.

Moreover, even if the previous year's bounds are outside these confidence intervals, changes in bounds are only implemented if doing so is considered material. Changes are considered

material if they impact the separation category of at least 1 per cent of separations in a given AN-SNAP class and at least 10 separations in that class.

IHACPA's Stability Policy has been applied to limit the change in price weights of each AN-SNAP class between NEP22 and NEP23. This policy applies to every AN-SNAP class with the same inlier bounds in NEP22 and NEP23 and for which fewer than 1,000 separations were used in the admitted subacute model. In line with the Stability Policy, the price weight of such a class must be within 20 per cent of the price weight of the same class in NEP22.

If the average length of stay of an AN-SNAP class falls outside the inlier lower and upper bounds, then the changes in bounds will be implemented even if they do not meet the stability and materiality considerations above.

4.2.4 Determining AN-SNAP Version 4.0 cost parameters

The AN-SNAP cost model parameters comprise the following:

- Same-day price weight: applicable to records within a same-day AN-SNAP class.
- Short-stay outlier per diem rate: applicable to records which do not belong to a same-day AN-SNAP Version 4.0 class and have a length of stay shorter than the inlier lower bound.
- Inlier episodic rate: applicable to records which do not belong to a same-day AN-SNAP Version 4.0 class and which have a length of stay greater than or equal to the inlier lower bound for their AN-SNAP Version 4.0 class.
- Long-stay outlier per diem rate: applicable to records which do not belong to a same-day AN-SNAP Version 4.0 class and which have a length of stay longer than the inlier upper bound for their AN-SNAP Version 4.0 class.

4.2.5 Calculation of additional adjustments

The following adjustments are applied within the admitted subacute cost model:

- Private patient service adjustment: This adjustment is calculated by care type and jurisdiction in the same manner as that which is calculated for AR-DRGs within the admitted acute cost model.
- A number of other adjustments are derived within the admitted acute cost model and applied in the subacute stream:
 - a. Indigenous
 - b. residential remoteness
 - c. radiotherapy
 - d. dialysis
 - e. treatment remoteness.

The proportion of NHCDC activity for which the adjustments apply are as follows:

- The Indigenous adjustment applied to 2.5 per cent of subacute activity.
- The residential remoteness adjustment applied to 8.0 per cent of subacute activity.
- The radiotherapy adjustment applied to 0.6 per cent of subacute activity.
- The dialysis adjustment applied to 0.7 per cent of subacute activity.
- The treatment remoteness adjustment applied to 0.4 per cent of subacute activity.
- The private patient adjustments applied to 20.2 per cent of subacute activity.

The cost model (including all adjustments except the private patient adjustments) is then calibrated to ensure that the sum of model costs in the subacute cohort is the same as that of in-scope costs.

4.2.6 Subacute and non-acute stabilisation

Refer to Section 2.2.16 for information about the stabilisation process. The same methodology has been applied to the admitted subacute and non-acute cost model.

4.2.7 Price weights and NWAU

Price weights are obtained by dividing the dollar-valued cost parameters by the reference cost (from the admitted acute care cost model). The same reference cost is used across all streams of activity and is discussed in Chapter 7.

4.2.8 Applying the NEP

As set out in the National Efficient Price Determination 2023–24, the price of an ABF admitted subacute activity is calculated using the following formula, with adjustments applied as applicable:

Price of an admitted subacute ABF activity

$$= \{ [PW \times (1 + A_{Ind} + A_{Res} + A_{RT} + A_{Dia}) \times (1 + A_{Treat})] - [PW \times A_{PPS} + LOS \times A_{Acc}] \} \times NEP$$

Where:

A_{Ind}	means the Indigenous adjustment
A_{Res}	means each or any patient residential remoteness area adjustment
A_{RT}	means the radiotherapy adjustment
A_{Dia}	means the dialysis adjustment
A_{Treat}	means each or any patient treatment remoteness area adjustment
A_{PPS}	means the private patient service adjustment, determined by care type and state of hospitalisation.
A_{Acc}	means the private patient accommodation adjustment determined by the state of hospitalisation and length of stay
LOS	means length of stay in hospital (in days)
NEP	means National Efficient Price 2023–24
PW	means the price weight for an ABF activity as set out in Appendix I of the National Efficient Price Determination 2023–24

In the event that the application of the private patient accommodation adjustment and the private patient service adjustment returns a negative NWAU value for a patient then an NWAU of zero is assigned to that patient.

Table 7 outlines the required information in order to apply the above formula.

Table 7: Datasets and tables used for assignment of NWAU to admitted subacute patient data

Input dataset or table	Description
APC NMDS and ASNHC DSS	Dataset based on the Admitted Patient Care National Minimum Data Set (APC NMDS), with extra AN-SNAP information from the Admitted Subacute and Non-acute hospital care DSS (ASNHC DSS), where available. Dataset specifications are located on the IHACPA website.
Postcode table	Table of postcodes mapped to the 2016 Australian Statistical Geography Standard (ASGS) remoteness area classification. Each postcode is mapped to the remoteness area category within which the majority of the postcode's population reside. PO Box postcodes are mapped to the remoteness area category within which the Post Office is located.
ASGS table	Table of ASGS codes mapped to the remoteness area category within which the majority of the population of the ASGS resides.
2023–24 NWAU price weight tables	2023–24 NWAU admitted subacute and non-acute AN-SNAP and care type same-day and overnight per diem price weight tables, found in the National Efficient Price Determination 2023–24.
2023–24 NWAU adjustments	2023–24 NWAU admitted subacute and non-acute adjustments, found in the National Efficient Price Determination 2023–24.

Sixteen variables are required to form the input APC dataset. These variables form part of the APC NMDS and the ASNHC DSS are on the IHACPA website and are listed in Table 8.

Table 8: APC and ASNHC DSS variables used to calculate 2023–24 admitted subacute NWAU

Dataset	Variable
APC NMDS	State identifier
	Hospital geographical indicator
	Date of birth
	Date of admission
	Date of separation
	Care type
	Indigenous status
	Funding source
	Total leave days
	Postcode of patient's usual residence
	Australian Statistical Geography Standard (ASGS) of patient's usual residence

Dataset	Variable
	Either the identifier signifying radiotherapy treatment or the list of patient's ICD-10-AM procedure codes.
	Either the identifier signifying dialysis or the list of patient's ICD-10-AM procedure codes.
ASNHC DSS	AN-SNAP class (Version 4.0)
	Palliative phase of care start date
	Palliative phase of care end date

5. Emergency care cost model

5.1 General issues

5.1.1 Cost unit

The cost unit for ABF for emergency care is an ‘emergency department stay’¹⁹ or presentation. It includes stays for patients who are treated and go home, and ones who are subsequently admitted to hospital or transferred to another facility for further care.

5.1.2 Scope

Emergency care is that provided to patients registered for care in an emergency department within a selected public hospital. Patients declared dead on arrival are considered in-scope if the death is certified by an emergency care clinician. Patients who leave emergency care after being triaged and advised of alternative treatment options, are also considered in-scope. All patients in the ABF emergency services care (ESC) data set specification (ABF ESC DSS) are in-scope.

Patients being treated in emergency departments may subsequently undergo a formal admission process. All patients remain in-scope for ABF for emergency care until they are recorded as having physically departed the emergency department, regardless of whether they have been admitted.

5.1.3 Classification

Two systems are used to classify emergency care for the purposes of ABF: Australian Emergency Care Classification (AECC) Version 1.0 and Urgency Disposition Groups (UDGs) Version 1.3. The former applies to level 3B, affecting six emergency departments, and the latter to emergency services (that is, levels 1 to 3A). The levels are defined in the National Efficient Price Determination 2023–24 – Online Glossary.

5.2 Analysis of costs to derive NWAU for emergency care

5.2.1 Data preparation

NHCDC Round 25 reported 8,100,201 presentations in 194 ABF establishments with patient-level cost data. This represents 96 per cent of the total emergency care population as reported in the ABF DSS datasets and NHCDC.

IHACPA undertook an initial data preparation process in line with that employed for NEP22, including the removal of out-of-scope blood, pharmaceutical, and teaching costs. For NEP23, State Public Health Payments were not removed from the cost data prior to modelling. The cleansed data is episode level data grouped by AECC or UDG. The following data was not used in deriving relativities across AECCs and UDGs, but was used to calibrate the overall cost level of the model:

- Presentations that grouped to error AECCs due to missing or invalid data fields.
- Presentations that were less than \$5.
- Extreme cost outliers within each AECC class.

¹⁹ See Emergency department stay – presentation date, DDMMYYYY (METeOR identifier: 684848).

- Presentations at establishments with an extreme cost ratio.

5.2.2 Sample weights

The NHCDC provides a sample of emergency care activity in public hospitals. To ensure the resulting calculations for the NWAU are appropriate for the full population of emergency care activity, observations from the NHCDC are weighted up to reflect the entire population of emergency care activity by state or territory.

5.2.3 Cost parameters and adjustments

Data enters the cost model in three levels, by presentation at the AECC level and UDG level, and at an aggregate UDG level. It is possible for an episode to have an AECC and a UDG associated to it. The AECC data is combined, and price weights are calculated. The same process is used for UDGs. Price weights are calibrated to ensure that AECC and UDG cost models return total actual costs at a national level.

The approach to pricing emergency care services incorporates an adjustment for Indigenous status, patient remoteness, and treatment remoteness. The Indigenous adjustment is a weighted average calculated across the admitted acute, admitted subacute and non-acute care, emergency department and non-admitted streams. The patient residential area remoteness adjustment is a single adjustment derived and applied to patients assigned to remote and very remote locations, and the patient treatment remoteness area adjustment is calculated and applied in a similar manner. The Stability Policy requires that the year to year movements in price weights are capped at 20 per cent.

5.2.4 Price weights and NWAU

The final step of the process involves the conversion of cost parameters to cost weights. This is done by dividing the AECC and UDG cost parameters by the reference cost for the admitted acute cost model. These cost weights are then converted to the price weights used to calculate the NWAU.

The price of an emergency care ABF activity is calculated using the following formula with adjustments as applicable.

Price of an emergency care or emergency service ABF activity

$$= \{PW \times (1 + A_{Ind} + A_{Res}) \times (1 + A_{Treat})\} \times NEP$$

Where:

A_{Ind}	means the Indigenous adjustment (emergency departments only)
A_{Res}	means each or any patient residential remoteness area adjustment (emergency departments only)
A_{Treat}	means each or any patient treatment remoteness area adjustment
NEP	means National Efficient Price 2023–24
PW	means the price weight for an ABF activity as set out in Appendix L (for emergency department) or Appendix M (for emergency services) of the National Efficient Price Determination 2023–24.

Table 9 outlines the required information in order to apply the above formula.

Table 9: Dataset and tables required for assignment of NWAU to emergency department patient data

Input dataset or table	Description
NAPEDC NMDS	Non-admitted patient emergency department care national minimum data set (NAP EDC NMDS).
2023–24 NWAU price weight tables	2023–24 emergency care NWAU AECC and UDG price weight tables, found in the National Efficient Price Determination 2023–24.
2023–24 NWAU adjustments	2023–24 emergency care NWAU adjustments, found in the National Efficient Price Determination 2023–24.

The variables in Table 10 are required to form the input emergency care dataset.

Table 10: NAPEDC NMDS variables used to calculate the 2023–24 NWAU

NAPEDC NMDS variable
State Identifier
Establishment identifier
Hospital geographical indicator
Postcode of patient's usual residence
ASGS of patient's usual residence
Indigenous status
Date of admission
Episode end status
Type of visit to emergency care
Triage category
AECC (Version 1.0) or UDG (Version 1.3).

6. Non-admitted care cost model

6.1 Overview

6.1.1 Cost unit

The cost unit for non-admitted care is a non-admitted patient service event. This is 'an interaction between one or more healthcare provider(s) with one non-admitted patient, which must contain therapeutic/clinical content and result in a dated entry in the patient's medical record.'²⁰

6.1.2 Scope

The scope of non-admitted care includes service events occurring in outpatient clinics in activity based funding (ABF) hospitals and in the community (by ABF hospitals).

6.1.3 Classification

The Tier 2 Non-admitted Care Services Classification Version 8.0 is used to classify non-admitted care for the purposes of ABF.

6.2 Analysis of costs to derive NWAU for non-admitted care

This section provides an overview of the steps involved in developing the NWAU for non-admitted (outpatient) care. The steps are included below.

6.2.1 Adoption of the NHCDC

Historically, the non-admitted cost model relied heavily on the 2012 Ernst and Young Non-admitted and Subacute Care Costing Study (the EY Costing Study) due to the limited quality and stability of NHCDC reporting. With the improvement in reporting and quality of the NHCDC, the cost weights from NEP17 onwards have shifted to adopt the NHCDC.

Table 11 illustrates the shift in hierarchy for non-admitted cost weight selection.

²⁰ See object class Non-admitted patient service event (METeOR identifier: 652089).

Table 11: Non-admitted cost weight selection hierarchy

Cost weight selection hierarchy			
	NEP16	NEP17	NEP18 to NEP23
Stage 1	Logical links to acute clinics or other clinics	Logical links to acute clinics	Logical links to acute clinics
Stage 2	Adopt EY Costing Study or other Costing studies	Adopt NHCDC (provided adequate sample and stable across two years)	Adopt NHCDC (provided adequate sample and stable across three years)
Stage 3	Adopt NHCDC	Adopt EY Costing Study or other costing studies	Adopt EY Costing Study or other Costing studies

Table 12 provides a breakdown for each class by the source data.

Table 12: Non-admitted data source breakdown

Source	Number of clinics for NEP22	Number of clinics for NEP23
EY Costing Study	5	4
2014 Costing Studies (Home Enteral Nutrition, Total Parenteral Nutrition and Home Ventilation Services and PwC Costing Study)	2	1
NHCDC Rounds 23, 24 and 25	119	124
Harmonised with admitted acute	2	2
Manual treatment	1	1
Total	129	134

The non-admitted model imposes a three-year time period for the evaluation of stability. The determination of stability in the NHCDC now necessitates the difference in average price between the current data period and previous data collection to be within the 20 per cent threshold, as well as the difference in average price between the last data period and two years ago.

In NEP23, two clinics transitioned from being priced using costing studies, to being priced using the NHCDC.

Additionally, the Stability Policy requires that the year-to-year movement in price weights be restricted to a maximum of 20 per cent. In NEP23, this restriction will not apply to two clinics with identified year-to-year price weight movements greater than 20 per cent as these clinics are transitioning from being priced using the Costing Study to the NHCDC.

In NEP23, two clinics were stabilised in adherence to the Stability Policy. Table 13 provides the stabilised classes broken down to a series level. For NEP23, two non-admitted clinics, 20.56 *Multidisciplinary case conference – patient not present* and 40.04 *Clinical pharmacy* were not stabilised following advice that costs were likely driven by COVID-19 related changes to the model and cost of care.

Table 13: Non-admitted stabilised classes by series

Series	Number of stabilised clinics
10: Procedure	1
20: Medical	1

6.2.2 Data preparation

Non-admitted patient cost data was received for eight jurisdictions. NHCDC Round 25 (2020–21) included non-admitted data for 242 ABF establishments and 145 Tier 2 classes, compared to 246 ABF establishments and 143 Tier 2 classes in NHCDC Round 24 (2019–20). Similarly to other streams, blood, PBS, and TTR were removed.

In NEP23, the cost weights for some clinics were determined using the 2012 EY Costing Study. The direct costs collected were inflated to 2020–21 in-scope costs using a combination of an historical inflation factor of 1.25 to account for overheads, and the historical NEP indexation rates.

Establishment and class combinations were excluded based on jurisdictional advice and cost ratios being significantly different from the population.

Class specific outlier exclusion rules developed for NEP18 were again included in the NEP23 model. Whole establishments were excluded if their cost ratios across clinics remained consistently high. At the service event level, conservative record level trimming within clinics was undertaken to exclude records with:

- Costs less than \$5.
- Events with high-cost thresholds after ranking of events by cost.
- Cost ratios being significantly different from the population.

For class 40.43 (hepatobiliary) a targeted approach was used to remove costs associated with Commonwealth pharmaceutical programs. The cost of new medicines introduced in March 2016 (used in the hepatobiliary clinic) were found to not be accurately excluded in IHACPA's pharmaceutical claim linking process. Consequently, the direct pharmacy cost bucket values for episodes separated after March 2016 were adjusted to align with the pre-March 2016 average cost of \$118 (adjusted for inflation).

For NEP21, the 20 and 40 series COVID-19 responses class prices were pegged to the infectious diseases classes (20.44 and 40.38 respectively), but were priced using NHCDC data for NEP22 onward. The 30 series class is diagnostic and is not priced.

In NEP23, the Tier 2 non-admitted services classification version 8.0 is priced, which adds classes 40.65 *Violence, Abuse & Neglect*, 40.66 *Genetics* as well as 20.58 *Long COVID* and 40.67 *Long COVID*. In the absence of activity or cost data for these classes collected in 2018–19, 2019–20 or 2020–21, the price was determined by combining data from other classes, based on jurisdictional advice. The *Long COVID* clinics 20.58 and 40.67 were pegged to their 20 and 40 series *General Medicine* counterparts 20.05 and 40.53.

6.2.3 Adjustments

The paediatric adjustment for Tier 2 classes priced using NHCDC only was introduced for NEP20. Adjustments in the non-admitted model are calculated following the admitted acute methodology described in Section 2.2.9.

The application of the paediatric adjustment mirrors the methodology of the acute model as follows:

- a. specialist paediatric patients are identified as being less than or equal to 17 years of age, from an establishment identified as delivering specialised paediatric services (listed in **Appendix E** of the National Efficient Price Determination 2023–24 as specialised children’s hospitals).
- b. The paediatric adjustment for each Tier 2 class is:
 - Rounded to the nearest whole per cent.
 - Capped and floored at 200 per cent and 80 per cent respectively.
 - Set to one (that is, no adjustment) if the adjustment was within 5 per cent either side of 100 per cent, or the calculated adjustment has changed to be less than or greater than 100 per cent in contrast to the adjustments calculated for NEP22.
- c. The cost parameters of each Tier 2 class are then calibrated to ensure that the modelled costs, with the paediatric adjustment applied, are equal to the actual costs of the Tier 2 class.

The adjustments for non-admitted multi-disciplinary clinics (NMC), patient residential area remoteness and Indigenous adjustments are calculated in a single step. The NMC value was calculated by averaging across three years of empirical values, in accordance with IHACPA’s Stability Policy, to produce the adopted NMC adjustment.

The Indigenous adjustment value is a cost-weighted average value based on all stream data. The patient residential remoteness and patient treatment remoteness values are adopted from the corresponding adjustments in the admitted acute model.

The application of the adjustment parameters mirror the methodology of the acute model as follows:

- a. The stabilised NMC adjustment is applied to all multi-disciplinary clinic records, and concurrently, the Indigenous adjustment and patient remoteness adjustment are applied to all Indigenous and/or regional patient records; the class means are then calibrated.
- b. The patient treatment remoteness adjustment is applied to all regional patient records and then class means are calibrated.

6.2.4 Price weights and NWAU

Price of a non-admitted ABF activity

$$= \{PW \times A_{Paed} \times (1 + A_{NMC} + A_{Ind} + A_{Res}) \times (1 + A_{Treat})\} \times NEP$$

Where:

A_{Paed}	means the paediatric adjustment
A_{NMC}	means the non-admitted multi-disciplinary clinic adjustment
A_{Ind}	means the Indigenous adjustment
A_{Res}	means each or any patient residential remoteness area adjustment
A_{Treat}	means each or any patient treatment remoteness area adjustment
NEP	means National Efficient Price 2023–24
PW	means the price weight for an ABF activity as set out in Appendix K of the accompanying National Efficient Price Determination 2023–24

Table 14 outlines the required information in order to apply the above formula.

Table 14: Dataset and tables required for assignment of NWAU to non-admitted patient data

Input dataset or table	Description
ABF NAP NBEDS	Non-admitted patient National Best Endeavours Data Set (ABF NAP NBEDS)
2023–24 NWAU price weight table	2023–24 non-admitted NWAU price weight table found in the National Efficient Price Determination 2023–24.
2023–24 NWAU adjustments	2023–24 non-admitted NWAU adjustments found in the National Efficient Price Determination 2023–24.

Ten variables are required to form the input non-admitted dataset as shown in Table 15.

Table 15: Non-admitted patient ABF DSS variables used to calculate NWAU

Non-admitted patient ABF DSS variables
Establishment identifier
Indigenous status
Date of birth
Non-admitted patient service event – service date
Multiple healthcare provider indicator (see National Efficient Price Determination 2023–24)
Tier 2 non-admitted service class (Version 8.0)
Postcode of patient's usual residence
ASGS of patient's usual residence
Hospital geographical indicator
Funding source

7. Conversion to a pricing model

7.1 Overview

The 2023–24 national pricing model is the eleventh annual pricing model that IHACPA has produced. Each pricing model comprises an NEP, price weights and adjustments, and each is based on cost and activity data from three years prior; the 2023–24 pricing model is based on 2020–21 cost and activity data.

The cost and activity data for each of the historical years are used to derive a cost model for that year, with only those costs and activity from ABF establishments being used. The cost model is designed to ensure that the total modelled costs are equalised with the estimated total actual costs across the ABF establishments.

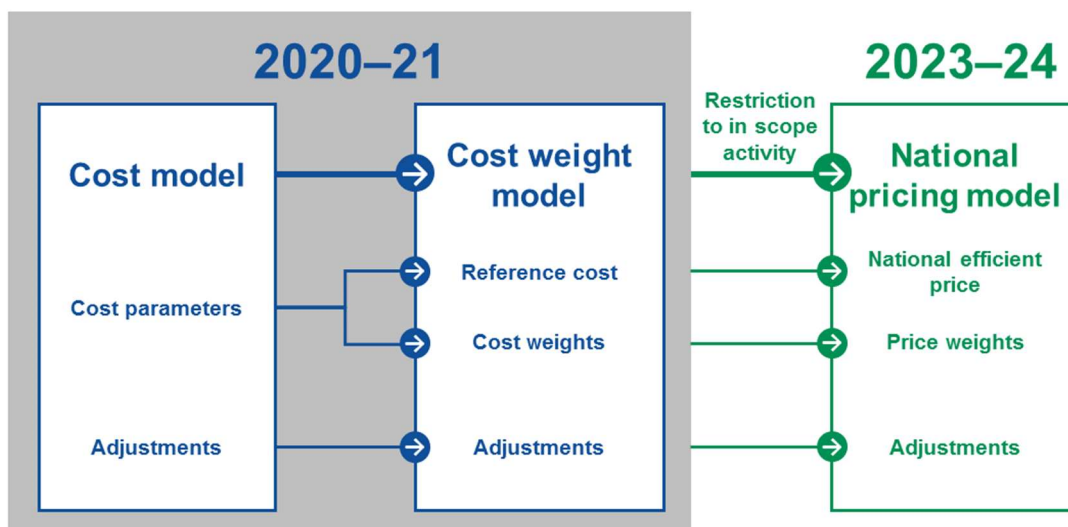
The cost model is made up of cost parameters and adjustments, including the paediatric adjustment, Indigenous adjustment, remoteness area adjustment COVID-19 treatment adjustment and intensive care unit adjustment, but it excludes the private patient service adjustment and private patient accommodation adjustment. The latter two adjustments are introduced in the pricing model to remove out-of-scope patient costs associated with private patients (see Section 2.2.3 and 2.2.10).

There are four steps in the transformation of each year's cost model into its associated pricing model, namely:

- a. Identification and exclusion of costs and activity regarded under the NHRA as out-of-scope for the purpose of ABF.
- b. Derivation of a reference cost (or standardised mean) used to transform the cost model into a cost weight model.
- c. Derivation of an annual indexation rate used to inflate the cost model to a level reflective of the estimated cost of delivering hospital services in the year of the pricing model.
- d. Transformation of the cost model to the pricing model using the results of the previous three steps.

The process of transforming the 2020–21 cost model to the 2023–24 national pricing model is illustrated in Figure 6.

Figure 6: Process of transforming the 2020–21 cost model to the 2023–24 national pricing model



7.2 Identification of out-of-scope costs

The first step in the process of transforming cost model to pricing model involves the identification of costs, such as those associated with programs covered entirely, or in part, by other funding sources (for example, Commonwealth or private health insurance). These are referred to as out-of-scope costs, and can be separated into three groups:

- Group 1 – activity funded by other sources. For example:
 - Private patient episodes in private hospitals.
 - Department of Veterans’ Affairs, defence and compensable episodes.
 - Activity which does not meet the criteria on the General List of In-scope Services (the General List), as defined in the National Efficient Price Determination 2023–24, such as Tier 2 class not listed in Category A or Category B of the General List.
- Group 2 – those proportions of costs associated with private patients that are offset by non-government and Commonwealth revenue.
- Group 3 – costs associated with other Commonwealth programs that are inherent within the cost data such as the Highly Specialised Drugs Program and Pharmacy Reform Agreements. Although 2020–21 data is used to set the price, the updated wholesale mark-up arrangements introduced in 1 January 2020 in the 7th Community Pharmacy Agreement have been accounted for in the source data.

Exclusion of these costs from the cost model is undertaken as follows:

- a. Group 1 – costs are excluded by restricting the cost model to in-scope activity.
- b. Group 2 – costs are excluded through the implementation of the private patient service adjustment and private patient accommodation adjustment within the pricing model (Section 2.2.10).
- c. Group 3 – costs are excluded by matching at the patient level where possible, otherwise by first calculating the costs as a percentage of estimated total costs, and then deflating the cost model by this percentage.

7.3 Derivation of a reference cost

The second step in the transformation of cost model to pricing model is the derivation of a reference cost (or a mean standardised to ensure the measure of an NWAU remains constant over time) that is used to convert the cost model into a cost weight model. Put simply, the parameters of the cost model are divided by this reference cost, converting the parameters to cost weights.

A separate reference cost is derived for each year's cost model based on the modelled costs of admitted acute activity in-scope for ABF. In particular, this activity excludes the Group 1 out-of-scope costs discussed in Section 7.2.

The 2009–10 reference cost associated with IHACPA's first national pricing model is defined as the mean model cost taken across all 2009–10 admitted acute activity in-scope for ABF. This mean model cost is \$4,260.

From 2010–11 onward, the reference cost is defined so that change in the reference cost over time reflects change in unit costs, excluding any influence of underlying changes in activity profiles between years (that is, casemix change). So, the 2010–11 reference cost is defined so that the change from the 2009–10 reference cost represents change in unit costs of an NWAU between the 2009–10 and 2010–11 cost models, excluding the effect of any changes in casemix between years. Similarly, the 2019–20 reference cost represents the change in unit cost between the 2018–19 and 2019–20 cost models, excluding the effect of any changes in casemix between years.

To exclude the external effects of casemix change between years, the two cost models are compared by first applying them to a common set of activity, namely 2020–21 admitted acute activity in-scope for ABF.

Once applied to this activity, the resulting pair of mean model costs is calculated, and the change between the two cost models is defined as the change in these two mean values, as shown in Table 17. This is referred to as the standardised change in cost models, with the associated growth referred to as the standardised growth rate. In other words, the growth between the 2019–20 and 2020–21 cost models is standardised against 2019–20 activity.

Table 16 shows the mean model costs of each model based on their application to the 2019–20 ABF activity along with the resulting standardised growth rate.

Table 16: Mean model costs when each cost model is applied to 2020–21 in-scope admitted acute activity data, and resulting standardised growth rate

2019–20 cost model	2020–21 cost model	Standardised growth rate
\$4,812	\$4,980	3.5%

Finally, the 2020–21 reference cost is defined as the 2019–20 reference cost indexed by the standardised growth rate; that is, the 2020–21 reference cost:

$$\begin{aligned} &= (2019\text{--}20 \text{ reference cost}) \times (\text{standardised growth rate}) \\ &= \$5,307 \times 103.5\% \\ &= \$5,492 \end{aligned}$$

Both 2019–20 and 2020–21 reference costs are given in Table 17.

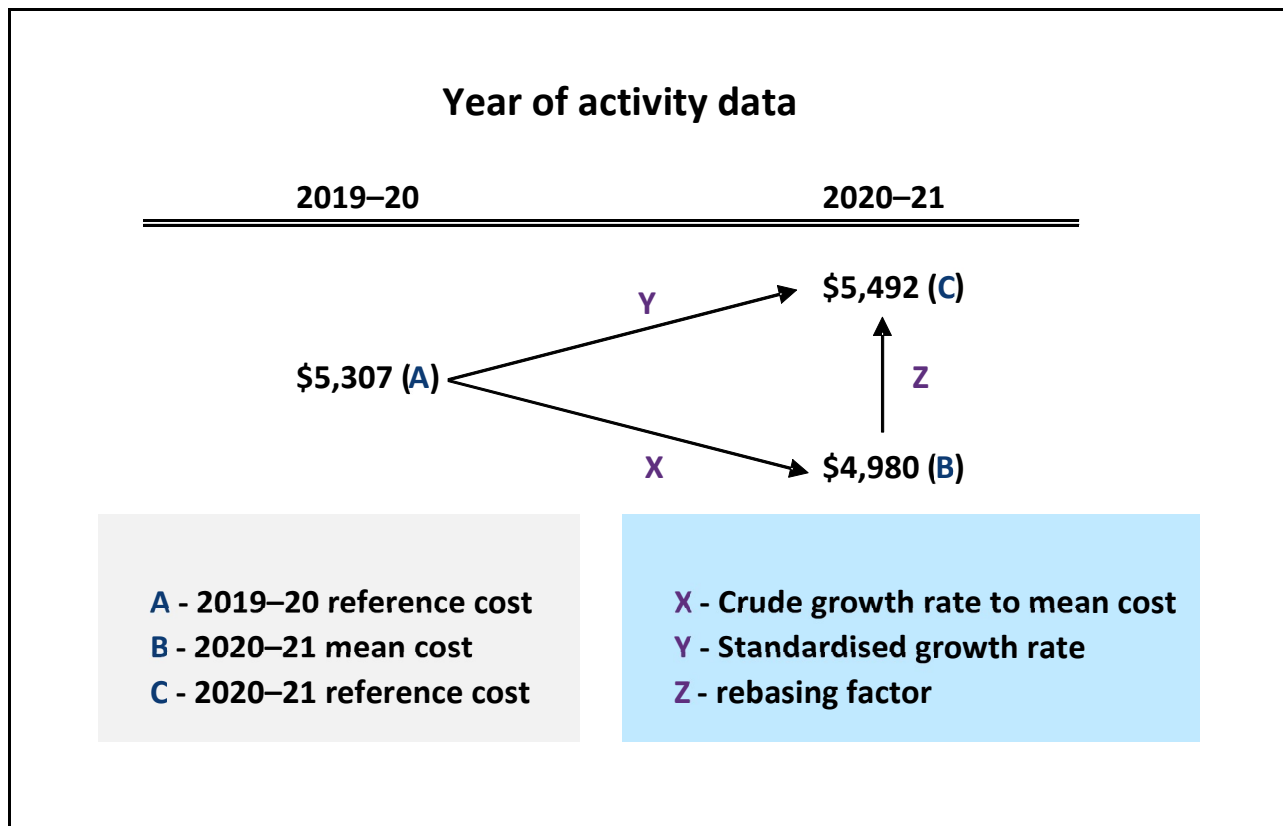
Table 17: Reference costs for 2019–20 and 2020–21 cost models.

2019–20 cost model	2020–21 cost model
\$5,307	\$5,492

The conversion of the 2019–20 unadjusted mean model cost given in Table 17 to the 2020–21 reference cost given in Table 18 (that is, \$5,307 → \$5,492) is referred to as ‘rebasing’.

Figure 7 illustrates this rebasing process in the context of the derivation of the 2020–21 reference cost.

Figure 7: Derivation of 2020–21 reference cost



There are two intended consequences of the selection of the reference costs:

- The change in reference costs represents change in unit costs excluding the effect of any changes in casemix.
- The 2019–20 and 2020–21 cost weight models give the same total weighted volume when applied to the 2020–21 activity data on which the standardised growth rate is derived.

7.4 Indexation

The final step in the transformation of the cost model to pricing model is the indexation of costs to estimate those in the year of the pricing model. Describing the methodology in the context of the 2023–24 pricing model, the objective is to derive an annual indexation rate that is used to inflate the 2020–21 cost model over three years to a level reflective of estimated 2023–24 costs.

To derive this rate, the 2020–21 cost model is applied retrospectively to the five years of patient costed admitted acute activity data²¹ prior to 2020–21, and comparisons are made between actual and modelled costs to determine the scaling of the 2020–21 cost model required to equalise each year’s modelled costs and actual costs. The trend of these scaling factors from 2015–16 to 2020–21 is then projected to model the indexation rate for the following three years.

Figure 8 illustrates the 2020–21 cost model applied to patient costed admitted acute activity data and shows the scaling factors required to ensure the model costs are equalised with actual costs. Since the 2020–21 cost model itself is equalised against 2020–21 actual costs, the scaling factor for 2020–21 is equal to 1 (that is, no scaling is required). Going back through the prior five years of cost data, scaling factors of less than one are required to deflate the modelled costs down to the level of the actual costs. This time series of scaling factors is given by:

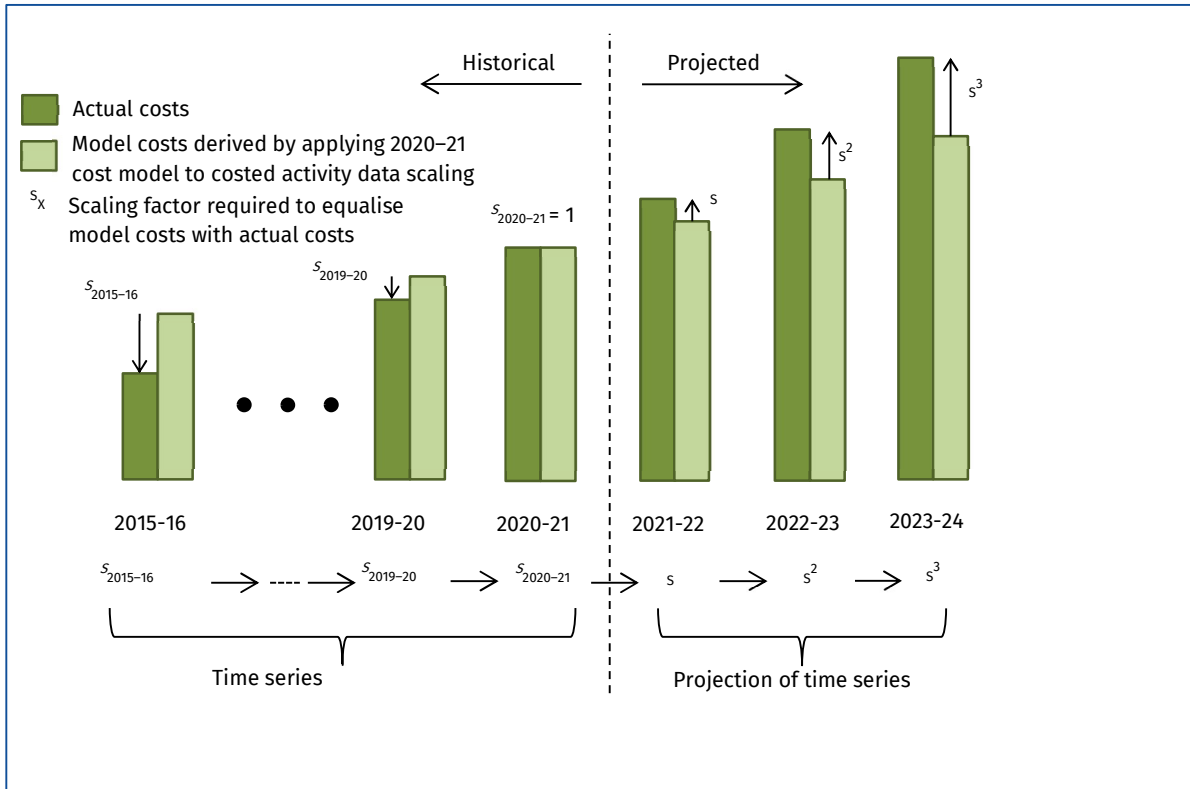
$$S_{2015-} \rightarrow \dots \rightarrow S_{2020-21},$$

This is then used to model an annual scaling factor, denoted **s**, which would inflate the 2020–21 cost model up to 2023–24 projected actual costs. The indexation rate is then based on this annual scaling factor.

Figure 8 also illustrates the projected annual scaling factor, **s**, together with projected actual and model costs. The 2023–24 projected scaling factor of s^3 is pictured alongside projected actual and model costs to illustrate that the 2020–21 cost model would require scaling by s^3 to ensure that the resulting ‘ s^3 -scaled 2020–21 cost model’, when applied to 2023–24 patient costed activity, would estimate the actual costs of the activity.

²¹ That is, activity from patient costed sites within the National Hospital Cost Data Collection.

Figure 8: Illustration of scaling factors required to equalise model and actual costs



Denoting the historical total actual costs of the activity by:

$$C_{2015-16}, \dots, C_{2020-21},$$

And denoting the total model costs associated with the 2020–21 cost model applied to each year’s costed activity by:

$$M_{2015-16}, \dots, M_{2020-21},$$

Each year’s scaling factor s_x is given by:

$$s_x = C_x / M_x$$

This ratio is referred to as the ‘cost ratio’.

It is worth noting that multiplying each year’s cost ratio by the draft 2020–21 reference cost of \$5,492 converts the $\{s_x\}$ time series to the time series of costs per weighted separation, where the weighted separations are determined by 2020–21 cost weight model.

A crucial requirement of the cost ratio time series is comparability over time. One way to ensure this occurs is to restrict the data on which the ratios are calculated to the set of establishments for which data is present across all five years (that is, to ensure that all five ratios are calculated across a common set of establishments). While this approach ensures comparability over time, it places significant restrictions on the sample of data.

Instead, an alternate method is used that greatly increases the data sample while maintaining comparability of the ratios over time. This method relies on the fact that any time series of ratios can be equivalently represented as the time series of year to year changes in ratios together with a single value of the time series (in this case, the 2019–20 to 2020–21 change in cost ratio of 2.5 per cent). This method only requires that each year-to-year comparison uses a common set of establishments (rather than requiring the establishments to be common across all five years).

The indexation rate relies on the 2020–21 admitted acute cost model only, which is based on AR-DRG Version 11.0.

Table 18 shows the year-to-year changes in cost ratio, calculated by applying the 2020–21 cost model to pairs of consecutive years' cost data, ensuring a common set of establishments are present in each pairwise comparison.

Table 18: Year-to-year changes in cost ratio

2015–16 to 2016–17	2016–17 to 2017–18	2017–18 to 2018–19	2018–19 to 2019–20	2019–20 to 2020–21
1.8%	3.7%	3.6%	2.8%	2.5%

Table 19 shows the resulting cost ratio time series derived by back-casting the 2020–21 cost ratio of 1.000 using the inverse of the year-to-year changes given in Table 18. Table 19 also shows the equivalent cost per weighted separation time series, and Figure 9 illustrates the two-time series graphically.

Table 19: Cost ratios and costs per weighted separation time series derived by applying the 2018–19 cost model and cost weight model to historical patient costed activity data

	2015–16	2016–17	2017–18	2018–19	2019–20	2020–21
Cost ratio	0.8687	0.8843	0.9167	0.9497	0.9760	1.0000
Cost per weighted separation	\$4,771	\$4,856	\$5,034	\$5,216	\$5,360	\$5,492

The next step in the process of deriving an annual indexation rate is to model a line of best fit against the time series of cost ratios (or equivalently, against the time series of costs per weighted separation). This line of best fit is used to estimate the projected annual inflation factor, s , shown in Figure 8.

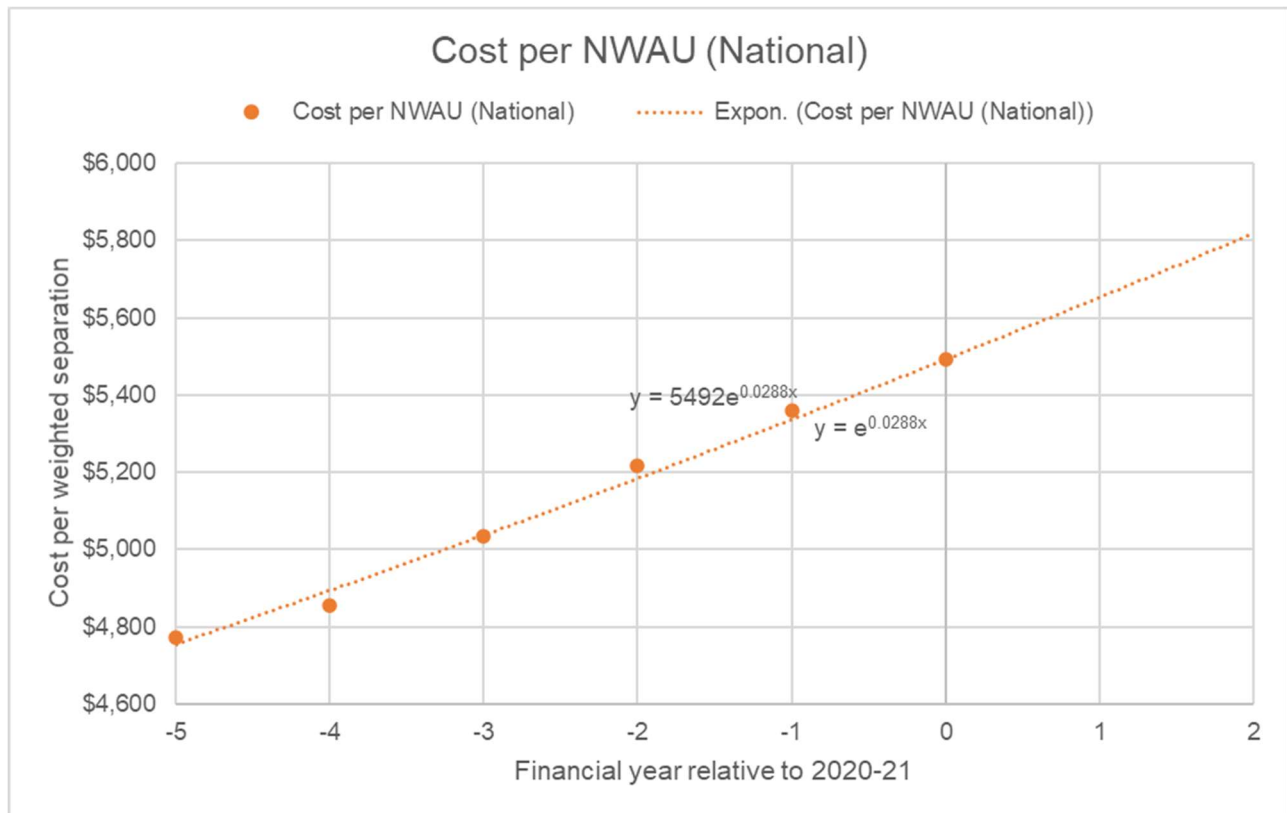
Given that the inflation factor, s , being modelled is an annual growth rate (that is, $s \approx s_{x+1} / s_x$) as opposed to an arithmetic change each year (that is, $s_{x+1} - s_x$), the line of best fit is taken to have an exponential form. In other words, an exponential form is chosen because exponential functions Ae^{Bx} have the characteristic that their annual growth rate is constant:

$$Ae^{B(x+1)} / Ae^{Bx} = e^B = \text{constant}$$

The exponential line of best fit is also modelled so that it passes through the 2020–21 observation to ensure that the resulting annual scaling factor applies to the 2020–21 cost ratio of 1.000 (or equivalently, to the 2020–21 reference cost of \$5,492).

The time series and associated exponential line of best fit are shown in Figure 9. The two equations displayed in Figure 9 represent the exponential line expressed in terms of the cost ratio time series and the cost per weighted separation time series.

Figure 9: Time series of cost ratio and cost per weighted separation with exponential line of best fit



Note: that although the two equations in Figure 9 have different coefficients multiplying the exponential function (that is, one and \$5,492), both have precisely the same coefficient inside the exponential function (that is, 0.0288). The two different coefficients multiplying the exponential function represent the estimated cost ratio and cost per weighted separation in 'year zero' (that is, $x = 0$), which is 2020–21. That is, the regression modelled cost ratio for 2020–21 is 1.000 and the modelled cost per weighted separation for 2020–21 is \$5,492.

The regression modelled estimates of cost ratio and cost per weighted separation for each of the years from 2015–16 to 2020–21 are given by substituting $x = -5 \dots 0$ into the equations.

For example, substituting $x = 0$ into the equations results in the 2020–21 cost ratio and cost per weighted separation:

$$\begin{aligned} 2020 - 21 \text{ cost ratio} &= 1.000 \times e^{(0.0288 \times 0)} \\ &= 1.000e^0 \\ &= 1.000 \end{aligned}$$

And,

$$\begin{aligned} 2020 - 21 \text{ cost per weighted separation} &= \$5492 \times e^{(0.0288 \times 0)} \\ &= \$5,492e^0 \\ &= \$5,492 \end{aligned}$$

Finally, the annual scaling factor (that is, s in Figure 8) is then defined as the annual rate of change associated with the exponential line of best fit, and the indexation rate is the growth rate of this annual scaling factor. The annual rate of change of the exponential line is $s = e^{0.0288}$, which is equal to 1.029, or 102.9 per cent. Therefore, the indexation rate is 2.9 per cent.

7.4.1 Adjustment to account for superannuation guarantee increases

The Superannuation Guarantee (Administration) Act 1992 section 19(2) legislates increases to the superannuation guarantee from 9.5 per cent to 12 per cent, introduced in 0.5 per cent increments from 2021-22 to 2025-26. As NEP23 is calculated using 2020-21 cost data, and is designed to price 2023-24 activity, this increase in the guarantee is not reflected in the Round 25 NHCD. The total increase between 2020-21 and 2023-24 is 1.5 per cent.

IHACPA was advised that the hospital workforce is paid superannuation at the guarantee rate in all but two states and territories, meaning that the increase in the guarantee will result in an increase in the total salary package of the hospital workforce in most states and territories. IHACPA therefore calculated a prospective adjustment of 0.81 per cent, to be applied in addition to indexation in the conversion of the reference cost to NEP23.

This adjustment is calculated based on total state and territory labour costs as a proportion of in-scope costs, identified by NHCD line items. The proposed adjustment is the national average of the estimated impact of the superannuation increase in each state or territory, weighted by total costs.

7.5 Transformation of cost model to pricing model

The final step in the process of developing the pricing models uses the three steps detailed in the previous sections to transform each cost model to the corresponding pricing model.

Each year's pricing model is designed to reflect estimated total in-scope costs associated with ABF activity in the year of the pricing model. The pricing model is therefore given by the inflated cost model defined in Section 7.4 with those out-of-scope costs defined in Section 7.2 removed. However, the pricing model is represented by the NEP together with price weights and adjustments. This splitting of prices into an NEP component and a price weight component is where the reference cost defined in Section 7.3 plays its role.

To describe the process in the context of the 2023–24 national pricing model, first the 2020–21 cost model is transformed into a cost weight model by dividing it through by the 2020–21 reference cost of \$5,492 (see Section 7.3). The 2020–21 cost model is then represented by a reference cost, cost weights and adjustments.

The inflation of the 2020–21 cost model to estimated 2023–24 costs is then undertaken by inflating the 2020–21 reference cost by the annual indexation rate (defined in Section 7.4) and keeping the cost weights and adjustments fixed. For this year, an additional superannuation guarantee adjustment (0.81 per cent) was applied to account for the legislated increase in superannuation from 9.5 per cent to 12 per cent from 2021-22 to 2025-26. The indexed 2020–21 reference cost (including the superannuation guarantee adjustment) is \$6,032. This is discussed further in Section 7.4.1.

The indexed 2020–21 reference cost (including the superannuation guarantee adjustment), together with the 2020–21 cost weights and adjustments, then represents the estimated 2023–24 cost model. The following example demonstrates how the process of indexing the reference cost and keeping the cost weights fixed, has the same effect as indexing the entire cost model.

For example, there are two equivalent methods to derive estimated 2023–24 costs for same-day episodes for AR-DRG E42B - bronchoscopy, intermediate complexity.

The 2020–21 same-day cost parameter associated with E42B is \$2,998.29. Applying the annual indexation rate of 2.9 per cent to the 2020–21 cost with the superannuation guarantee adjustment, the estimated same-day cost of E42B in 2023–24 is given by:

2023–24 estimated same-day cost of E42B

= (2020–21 estimated cost) × (indexation) × (superannuation guarantee adjustment)

= \$2,998.29 (102.9%)³ × (100.81%)

= \$3,293.24

On the other hand, the same-day cost weight associated with E42B is 0.5459 (= \$2,998.29/\$5,492). Applying the annual indexation rate to the 2020–21 reference cost with the superannuation guarantee adjustment, the resulting estimated cost of a same-day episode in E42B in 2023–24 is given by:

2023–24 estimated same-day cost of E42B

= (2020–21 cost weight) × (indexed reference cost) × (superannuation guarantee adjustment)

= 0.5459 × (\$5,492 × (102.9%)³) × (100.81%)

= 0.5459 × \$6,032

= \$3,293.01

Note there is a minor difference in final result due to rounding of the price weight.

7.6 Back-casting for ABF

Back-casting is the process by which the effect of significant changes to the ABF classification systems or costing methodologies are reflected in the pricing model the year prior to implementation, for the purpose of the calculation of the Commonwealth's funding for each ABF service category.

In accordance with Clauses A34(b) and A41 of the NHRA, the Pricing Authority has applied the methodological changes made in NEP23 to NEP22 to determine the back-cast NEP22 for the purposes of determining Commonwealth growth funding between 2022–23 and 2023–24. The back-cast amount for NEP22 is provided in Chapter 11 of the National Efficient Price Determination 2023–24.

7.6.1 Back-casting ABF volume

IHACPA has also estimated the volume impact of methodological changes between NEP22 and NEP23, which can be used for the purpose of estimating movements in volume between NEP22 and NEP23. This is useful for relating NWAU22 activity to NWAU23 targets, and for estimating Commonwealth growth funding prior to actual 2023–24 activity data being available.

The volume multipliers (VM) are calculated for each jurisdiction for each ABF service category stream and are provided in Chapter 11 of the National Efficient Price Determination 2023–24. The back-cast volume multipliers for each jurisdiction (for each ABF product category) are calculated from the most recently reported activity data, namely 2021–22, as:

$$VM = \frac{\text{NWAUs delivered by backcast model (NWAU23 calculator)}}{\text{NWAUs delivered by original cost model (NWAU22 calculator)}}$$

The volume multipliers can be applied to estimates of an NWAU count for 2023–24 if actual data is not available.

8. Block-funded hospitals

8.1 General issues

8.1.1 Cost unit

The cost unit is a hospital.

8.1.2 Scope

Hospitals are in-scope if they have been nominated by a jurisdiction and meet the criteria for block-funded hospitals. The criteria that defines a block-funded hospital is less than or equal to 3,500 total NWAU per annum for rural hospitals and less than or equal to 1,800 admitted patient NWAU per annum for city hospitals.

8.1.3 Classification

The cost model for National Efficient Cost Determination 2023–24 (NEC23) comprises of 368 small rural hospitals, two less hospitals compared to NEC22. Of these, 289 were used in the modelling. While 79 hospitals were excluded from modelling due to incomplete data, they continue to have their efficient cost calculated using NEC23 cost model parameters. There are nine major city hospitals, 22 specialist psychiatric and one other hospital that are block funded on a separate basis. The initial data preparation of the NEC23 model remains largely unchanged from NEC22, involving the estimation of in-scope activity and expenditure within the admitted, emergency and non-admitted streams.

Similar to the NEC22 cost model, the NEC23 cost model adopts the fixed-plus-variable model with the application of a low-outlier threshold. The low-outlier threshold is used to identify low-outlier establishments which report little activity but demonstrate high cost variability. It is calculated as the activity level (NWAU) corresponding to the mean of the residual (total in-scope expenditure less reference cost x NWAU) divided by double the reference cost. Of the 289 hospitals used for modelling in NEC23, there were 63 low-outlier hospitals, with the remaining 226 hospitals used to develop the cost model. The fixed-plus-variable model, includes a:

- Variable component, which is dependent on the hospital's total activity level and calculated using a dollars-per-NWAU rate based on the corresponding year's reference cost. For NEC23 this was \$5,492 per-NWAU.
- Fixed component, which represents the fixed costs of the hospital where they are not suitably covered through the variable component. This is calculated as the mean of the residual (total in-scope expenditure less reference cost x NWAU) for the hospital cohort of inner regional, outer regional and remote hospitals as well as all low-outlier hospitals with their total NWAU set to zero. The fixed component is dampened based on hospital size: smaller hospitals receive a greater fixed component while the large NEC hospitals, close to the block-funding eligibility threshold of 3,500 NWAU, receive a smaller fixed component.

The modelled cost under the fixed-plus-variable model is the sum of the fixed and variable components. Hospitals identified as low-outliers have their modelled cost set at the fixed component with no dampening or remoteness adjustment applied.

The fixed-plus-variable model continues to recognise two levels of remoteness in the form of:

- remoteness category 1: inner regional, outer regional, remote
- remoteness category 2: very remote.

A remoteness adjustment of 48.3 per cent is applied to the fixed component of very remote hospitals.

8.2 Analysis of costs

8.2.1 Data preparation

The methodology for NEC23 has been maintained since the data preparation process was updated in NEC17 in line with an update to the national public hospital establishment database (NPHEd) in 2014–15. There was another update to the NPHEd in 2018–19, which is discussed further in Section 8.2.3. The data preparation process involves:

- Extraction of activity data from the IHACPA ABF DSS for each block-funded hospital and conversion of that data into in-scope NWAUs.
- Extraction of in-scope establishment expenditure data from the NPHEd.

The establishment data required to populate the 2020–21 cost model table are:

- Total in-scope NWAU per annum for 2020–21.
- Total in-scope expenditure in 2020–21.

In line with the NEC22 model, the NEC23 model uses a single year of activity data only. This has been done to provide greater model responsiveness and remove the memory effect of a rolling three-year average used in models prior to NEC20.

The eligibility of hospitals for block-funding is determined by ensuring that the latest year's total NWAU is less than or equal to 3,500 NWAU per annum for rural hospitals, and the admitted patient activity for city hospitals is less than or equal to 1,800 NWAU per annum.

The NWAU activity measure is calculated first and then the best estimate of 2020–21 in-scope expenditure is derived, as set out below. A guide to the process used to prepare data for NEC23 is set out in **Appendix E: NEC23 data preparation**.

8.2.2 In-scope activity

Admitted acute and subacute NWAU

Patient-level admitted data was available from approximately 96 per cent of hospitals in the APC stream.

The patient-level admitted data has been fed through the NEP22 NWAU calculator to calculate the in-scope NWAU and public patient equivalent NWAU of all in-scope hospital activity. A slightly modified version of the calculator is used for episodes with an admission date prior to 1 July 2020 in order to determine the NWAU associated to the portion of the episodes occurring in 2020–21. This is discussed further under the 'work-in-progress episodes' section below.

For the few hospitals that do not supply patient level admitted data, admitted NWAU is estimated based on the sum of the reported in-scope admitted acute, subacute, other admitted and mental health care expenditure from the NPHEd. The number of admitted NWAU is calculated by multiplying the total reported in-scope admitted expenditure by 0.000147.

The admitted multiplier is the parameter estimate from a linear regression of NWAU (using the NEP22 NWAU calculator) versus total reported in-scope admitted expenditure for small hospitals (total public patient equivalent NWAU less than 5,000) that have admitted activity data. Due to known issues in separating admitted and emergency expenditure in Victorian block-funded hospital data, establishments from Victoria were excluded as reference data for this modelling process.

Work-in-progress episodes

The block-funded cost model is used to calculate the expected in-scope cost of a block-funded hospital for a single financial year. The patient-level admitted activity data contains episodes separated in the financial year, in some cases having been admitted up to 11 years prior.

Using the NWAU calculator as it stands would assign 11 years of activity to this single patient, resulting in incomparable cost and activity calculations. On the other hand, there may be episodes admitted during the financial year that have not yet been discharged, and thus do not appear in the activity data. Episodes admitted before the beginning of the financial year or separated after the financial year are referred to as 'work-in-progress' (WIP) patients.

To address this issue, WIP patients who have been separated during the financial year have their total weighted activity reduced so that only NWAU associated to the current financial year are included. To account for WIP patients not yet discharged, each establishment's total NWAU is scaled up based on state-level ratios calculated. The ratios used for NEC23 are shown in Table 20.

Table 20: State-level admitted WIP ratios

State	WIP adjustment
NSW	2.2%
Vic	2.7%
Qld	1.6%
SA	2.2%
WA	1.2%
Tas	3.5%

Emergency care NWAU

Approximately 46 per cent of block-funded hospitals reported emergency activity at the patient level, and 33 per cent reported aggregate presentation information at the UDG level. Also, 15 per cent of block-funded establishments reported basic summary counts and activity estimates, although these were assessed to be unsuitable for use for NEC23 and were instead estimated using historical data. Where available, these data are used to determine NWAU values utilising the NEP22 price weights.

For hospitals that do not supply emergency activity data, emergency NWAU is estimated based on the reported in-scope emergency expenditure from the NPHED. The number of emergency NWAU is calculated by multiplying the total reported in-scope emergency expenditure by 0.000175.

The emergency multiplier is the parameter estimate from a linear regression of NWAU (using the NEP22 NWAU calculator) versus total reported in-scope emergency expenditure for small hospitals (total public patient equivalent NWAU less than 5,000) that have emergency activity data. Due to data quality issues, all establishments from Victoria were excluded as reference data for the modelling process.

Non-admitted NWAU

Approximately 66 per cent of block-funded hospitals reported non-admitted activity at the patient level, and 73 per cent reported aggregate service event information at the class level. Where available, these data are used to determine NWAU values utilising the NEP22 price weights.

For the hospitals that do not supply non-admitted activity, non-admitted NWAU is estimated based on reported in-scope non-admitted expenditure from the NPHED. The number of non-admitted NWAU is calculated by multiplying the total reported in-scope non-admitted expenditure by 0.000128.

The non-admitted multiplier is the parameter estimate from a linear regression of NWAU (using the NEP22 NWAU calculator) versus total in-scope non-admitted expenditure for small hospitals (total public patient equivalent NWAU less than 5,000) that have non-admitted activity data. Due to data quality issues, five establishments from Victoria were excluded as reference data for the modelling process.

8.2.3 Out-of-scope expenditure

In 2019–20, the NPHED was updated to introduce six new product streams to capture total recurrent expenditure in areas out-of-scope for the NHRA including:

- admitted acute care (excluding mental health care) (out-of-scope for the NHRA)
- admitted subacute and non-acute care (excluding mental health care) (out-of-scope for the NHRA)
- other admitted care (excluding mental health care) (out-of-scope for the NHRA)
- admitted mental health care (out-of-scope for the NHRA)
- emergency care services (out-of-scope for the NHRA)
- depreciation.

In previous years, where out-of-scope expenditure was not separately identified in the NPHED, an establishment's in-scope proportion of expenditure was estimated based on the share of in-scope activity data. This aimed to account for any expenditure against services not in-scope under the NHRA. Similarly to NEC22, the NEC23 data preparation process uses the NPHED reported in-scope expenditure at a stream level. This updated in-scope expenditure calculation has been adopted for all jurisdictions except Victoria where the prior methodology of estimating the in-scope amount has been retained.

In addition to the aforementioned out-of-scope product streams, the following NPHED total recurrent expenditure product streams are also treated as out-of-scope in the NEC23 data preparation process:

- direct teaching, training and research
- Commonwealth funded aged care
- other aged care
- non-admitted care (excluding emergency care) (out-of-scope for the NHRA)
- other expenditure (out-of-scope for the NHRA).

8.2.4 Calculation of cost parameters

Application of the fixed-plus-variable model and consideration of the low outlier hospitals provided the cost parameters shown in Table 21.

Table 21: Cost parameters of the fixed-plus-variable model and low-outlier establishments

Cost parameter	Value
NEP23 reference cost	\$5,492 per NWAU
Initial intercept	\$1,863,817
Low-outlier threshold	175 NWAU
Low-outlier hospitals	67
Fixed cost base (inner regional, outer regional and remote)	\$1,991,080
Fixed cost base (very remote)	\$2,952,331
Fixed cost dampening rate	0.029% per NWAU
NEC23 very remote adjustment (stabilised)	48.3%

The NEC very remote adjustment and dampening only apply to the fixed component and not the variable component or low-outlier hospitals. From NEC22 onwards, the very remote adjustment will be stabilised using a similar method as the NEP models. The stabilised adjustment is calculated as the arithmetic mean of the last three empirically calculated adjustment values.

The dampening rate is calculated such that the fixed component is fully applied at zero NWAU and is completely dampened at 3,500 NWAU, which marks the transition point between block funding and ABF. The purpose of dampening is to gradually reduce the contribution of the fixed component to the overall modelled cost of individual establishments as their activity increases and their variable component, based on the NEP, increases. This is implemented via the use of a multiplier applied to the base fixed component amount:

$$\text{Dampening factor} = \begin{cases} \frac{3500 - \text{Total NWAU}}{3500}, & \text{where Total NWAU} \leq 3,500 \text{ NWAU} \\ 0, & \text{where Total NWAU} > 3,500 \text{ NWAU} \end{cases}$$

For NEC23, 368 small rural hospitals have been designated as block funded including the low-outlier hospitals and establishments excluded from the development of the model. These hospitals were categorised by remoteness to determine NEC23.

8.3 Calculation of national efficient cost

The efficient cost of a small rural hospital is the sum of the fixed cost component and variable cost component.

8.3.1 Calculation of the efficient cost for small rural hospitals

The modelled cost of an in-scope block-funded hospital is given according to:

$$\text{Modelled cost} = \text{Base fixed component} \times \text{Dampening factor} \times (1 + \text{Very remote adjustment}) + \text{NEP23 reference cost} \times \text{Total NWAU}$$

Where “Total NWAU” is a measure of total in-scope activity by the establishment, and all other terms are as defined in Section 8.2.4. Non-routine hospitals included:

(a) **Low outliers**

- The fixed-plus-variable model is not applied to low-outlier hospitals which have activity below a calculated activity threshold of 175 NWAU.
- The efficient cost of these hospitals is determined as the fixed component with no dampening or very remote adjustment applied.

(b) **Hospitals with missing data**

- Jurisdictional advice was sought on hospitals with missing activity or cost data. Where appropriate, new data received from jurisdictions was incorporated into existing datasets for these hospitals. They are then treated in the same way as hospitals reporting adequate data for the purposes of determining the 2020–21 total cost and NEC23.

In addition to the above, standalone hospitals including specialist psychiatric and major city hospitals are treated separately and are addressed further below.

The efficient cost of an in-scope block-funded hospital is calculated using the formula as above, using cost parameters from Table 21 indexed forward three years (refer to Section 3 of the National Efficient Cost Determination 2023–24).

8.3.2 Calculation of the efficient cost of specialist psychiatric, major city and other standalone hospitals

Specialist mental health hospitals are excluded from the model from the outset. These hospitals are assigned model costs based on advice from jurisdictions. Where advice was not received from jurisdictions, reported 2020–21 NPHED data or the final supplementary NEC22 efficient cost has been escalated by the NEC23 adjusted indexation rate to become the NEC23 efficient cost for each of these hospitals. Indexation is described in further detail in Section 8.4.

The 2023–24 efficient cost for the nine major city hospitals, as well as the one other standalone hospital, will be determined separately in a similar way, following consultation with jurisdictions.

8.4 Indexation of the 2020–21 model

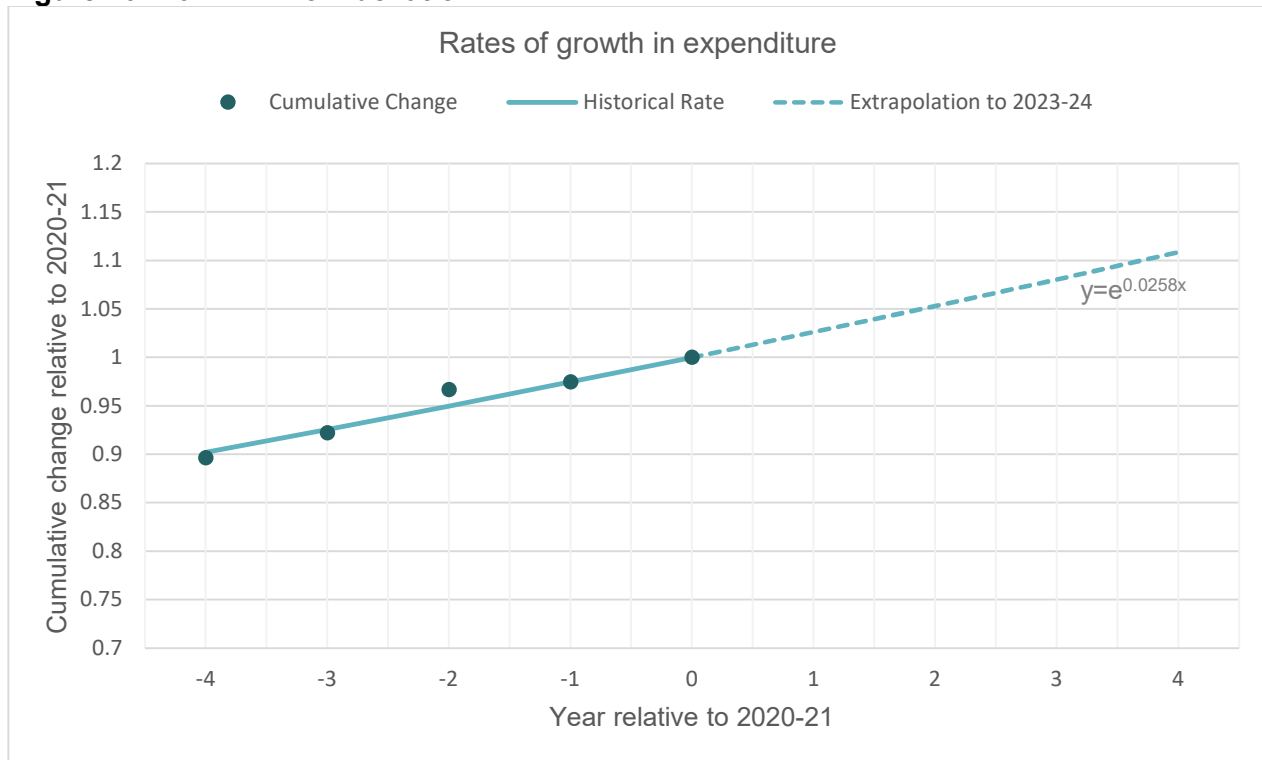
Due to the three-year time lag in data collection, cost model results for 2020–21 were indexed over three years to give a price model for 2023–24. Figure 10 shows that the raw indexation rate (2.6 per cent) is given by the slope of the exponential line of best-fit of in-scope expenditure for block-funded hospitals across five years. Establishments with data quality issues were excluded from the 2019–20 to 2020–21 comparison.

For NEC23, this raw indexation rate has been adjusted to include an additional 0.81 per cent to prospectively account for increases in the minimum superannuation guarantee (refer to Section 7.4.1 for further background information). The adjusted NEC23 indexation rate was calculated using the formula:

$$\text{Adjusted NEC23 indexation rate} = [(1 + 2.6\%)^3 \times (1 + 0.81\%)]^{\frac{1}{3}} - 1 = 2.9\%$$

The overall 2020–21 model spend was projected to 2023–24 using the annual indexation factor of 2.9 per cent per annum, as specified in the National Efficient Cost Determination 2023–24.

Figure 10: Raw NEC23 Indexation



8.5 Back-casting for block-funded hospitals

In accordance with the guiding principles of the NEC cost model, the Pricing Authority has applied the methodological changes made in NEC23 to NEC22 to determine the back-cast NEC22 for the purposes of determining Commonwealth growth funding between 2022–23 and 2023–24. The back-cast multiplier for NEC22 is provided in Chapter 8 of the National Efficient Cost Determination 2023–24.

$$\text{Back-cast multiplier} = \frac{\text{Predicted cost for 2022–23 based on NEC23 modelled cost}}{\text{Predicted cost for 2022–23 based on NEC22 modelled cost}}$$

A back-cast NEC22 is calculated to estimate growth between 2022–23 and 2023–24. The back-cast NEC22 is calculated by taking the in-scope cost for 2020-21 and indexing it forward two years based on the latest indexation methodology.

Appendices

Appendix A: Reference tables.....65

Appendix B: Application of NWAU variables67

Appendix C: Summary of input data.....80

Appendix D: List of AR-DRGs adopting the L1.5 H1.5 methodology82

Appendix E: NEC23 data preparation83

Appendix A: Reference tables

Table 22: Sections of the NEP23 and NEC23 Determinations

Component	Section of Determination
National efficient price	Chapter 2
Admitted acute services – NEP23	
AR-DRG inlier bounds, flags for designated same-day payment AR-DRG and unbundled ICU AR-DRG, national weighted activity unit weights for same-day payment AR-DRGs, short-stay outliers (base and per diem), inliers, long-stay outliers (per diem), intensive care unit rates per hour	Appendix H
Adjustments to price weights	Chapter 6
List of radiotherapy codes	Appendix B
List of dialysis codes	Appendix C
Specified intensive care units	Appendix D
Specialised children's hospitals	Appendix E
Private patient adjustments	Appendix F
Provisional weights for very long-stay patients	Appendix G
Funding adjustments for hospital acquired complications	Appendix N
Risk adjustment factors for avoidable hospital readmissions	Appendix O
List of COVID-19 treatment adjustment AR-DRGs	Appendix P
Definition of an eligible ICU or paediatric ICU	Glossary
Emergency department services – NEP23	
AECC Version 1.0 weights	Appendix L
UDG Version 1.3 classification weights	Appendix M
Emergency care in-scope for ABF	Online Glossary
Definitions of emergency care role levels	Online Glossary
Non-admitted services – NEP23	
Tier 2 Non-Admitted Services Classification Version 8.0 weights, paediatric adjustments	Appendix K
Definition of Tier 2 list of non-admitted services classifications Version 8.0	Online Glossary
Subacute and non-acute services – NEP23	
AN-SNAP Version 4.0 weights	Appendix I
Definitions of AN-SNAP Version 4.0	Online Glossary
Admitted mental health care services – NEP23	
AMHCC inlier bounds and NWAU weights	Appendix J

Component	Section of Determination
Adjustments to price weights	Chapter 6
Specialised children's hospitals	Appendix E
Private patient adjustments	Appendix F
Block-funded hospital services – NEC23	
The efficient costs for each block-funded hospital	Chapter 3

Table 23: Summary of classification systems and sources of cost

Service stream	Classification ²²	Cost data	Activity data
Admitted acute care	Australian Refined Diagnosis Related Groups Version 11.0	National Hospital Cost Data Collection (NHCDC) Round 25 (2020–21)	Admitted patient care national minimum data set (APC NMDS)
Admitted mental health care	Australian Mental Health Care Classification Version 1.0	NHCDC Round 25 (2020–21)	Activity based funding (ABF): Mental health care National Best Endeavours Data Set (NBEDS) APC NMDS
Emergency care	AECC Version 1.0 Urgency Disposition Groups Version 1.3	NHCDC Round 25 (2020–21)	Non-admitted patient emergency department care NMDS and Emergency service care NMDS
Non-admitted care	Tier 2 Outpatient Class Definitions Version 8.0	NHCDC Round 25 (2020–21)	ABF Non-admitted patient (NAP) NBEDS and ABF NAP care aggregate NBEDS
Subacute care (and non-acute)	AN-SNAP Version 4.0 care type	NHCDC Round 25 (2020–21)	APC NMDS and admitted subacute and non-acute hospital care NBEDS
Block-funded services	IHACPA-defined size and Australian Statistical Geography Standards location categorisation on total NWAU for hospital	Expenditure data from the national public hospital establishments database (2020–21 financial year) NHCDC Round 25 (2020–21)	APC NMDS, NAPEDC NMDS, ABF ES DSS, NPHEd, non-admitted patient and aggregate DSS.

²² Details of each of the classifications are available from:
<https://www.IHACPA.gov.au/what-we-do/data-collection/data-specifications/abf-data-request-specifications-2020-21>

Appendix B: Application of NWAU variables

Table 24: Acute admitted patients: variable definitions

Variable	Name	Description	Definition
A0	_pat_covid_flag	<p>Patient has:</p> <p>ICD10AM Version 11 diagnoses U071 or U072; or</p> <p>ICD10AM Version 12 diagnoses U0711, U0712 or U072</p> <p>Either supplied in the input dataset or derived from the list of supplied diagnosis codes.</p>	1 if patient had a COVID-19 diagnosis; else 0.
A1	_pat_covid_treat_flag	<p>Patient has:</p> <p>AR-DRG as per Appendix P of National Efficient Price Determination 2023-24; and</p> <p>ICD10AM Version 11 diagnoses U071 or U072; or</p> <p>ICD10AM Version 12 diagnoses U0712 or U072</p> <p>Either supplied in the input dataset or derived from the list of supplied diagnosis codes.</p>	1 if patient meets criteria; else 0.
A2	_pat_radiotherapy_flag	Radiotherapy eligible separation. Either supplied in the input dataset or derived from the list of supplied procedure codes.	1 if patient had radiotherapy related treatment procedure; else 0.
A3	_pat_dialysis_flag	Dialysis eligible separation. Either supplied in the input dataset or derived from the list of supplied procedure codes.	1 if patient had a dialysis procedure and is not in AR-DRG L61Z or L68Z; else 0.
A4	_est_eligible_paed_flag	Paediatric adjustment eligible establishment, derived from ICU paediatric eligibility table	1 if establishment is designated as eligible for paediatric adjustment; else 0.
A5	_est_eligible_icu_flag	ICU rate adjustment eligible establishment, derived from ICU and paediatric eligibility table	1 if establishment is designated as eligible for ICU rate adjustment; else 0.
A6	_pat_remoteness	Patient residential remoteness Area	<p>2016 ASGS remoteness area category of the patient location taken from the episode's geographical information in ranked order of preference: SA2, postcode or the hospital geographical indicator variable where:</p> <p>0 = major city</p> <p>1 = inner regional</p> <p>2 = outer regional</p> <p>3 = remote</p> <p>4 = very remote.</p>

Variable	Name	Description	Definition
A7	_treat_remoteness	Patient treatment remoteness Area	2016 ASGS remoteness area category of the patient treatment location taken from the hospitals geographic location information, where: 0 = major city 1 = inner regional 2 = outer regional 3 = remote 4 = very remote.
A8	_pat_acute_flag	Acute patient flag	1 if (care type = 1) or (care type = 7 and number of qualified days for newborns > 0); else 0.
A9	_pat_los	Length of stay	Max (1, (date of separation) - (date of admission) - (total leave days)) if care type = 1; else total qualified days if care type = 7.
A10	_pat_sameday_flag	Same-day flag	1 if date of admission = date of separation; else 0.
A11	_pat_age_years	Age at admission (in years)	Total whole years from date of birth to date of admission.
A12	_pat_eligible_paed_flag	Paediatric adjustment eligible patient	1 if (_pat_age_years between 0 and 17) and (est_eligible_paed_flag=1); else 0.
A13	_pat_ind_flag	Indigenous patient flag	1 if patient Indigenous status = 1, 2 or 3; else 0.
A14	_pat_private_flag	Private patient flag	1 if funding source = 9 or 13 for 2012-13 data and later. ²³
A15	_pat_public_flag	Public patient flag	1 if funding source = 1, 2 or 8 for 2012-13 data and later. ²⁴
A16	drg_samedaylist_flag	Same-day price list flag	1 if same-day price list variable from joined NWAU AR-DRG price weight table equals 'Yes'; else 0.
A17	drg_bundled_icu_flag	Bundled ICU flag	1 if bundled ICU variable from joined NWAU AR-DRG price weight table equals 'Yes'; else 0.
A18	drg_inlier_lb	Inlier lower bound	Inlier lower bound from NWAU AR-DRG price weight table.
A19	drg_inlier_ub	Inlier upper bound	Inlier upper bound from NWAU AR-DRG price weight table.
A20	drg_pw_sd	Same-day price weight	Same-day price weight from joined NWAU AR-DRG price weight table if not missing; else 0.
A21	drg_pw_sso_base	Short-stay outlier base price weight	Short-stay outlier base price weight from joined NWAU AR-DRG price weight table if not missing; else 0.

²³ Or 1 if funding source = 2 or 3 for 2011-12 data or earlier.

²⁴ Or 1 if funding source = 1, 10 or 11 for 2011-12 data or earlier.

Variable	Name	Description	Definition
A22	drg_pw_sso_perdiem	Short-stay outlier per diem price weight	Short-stay outlier per diem price weight from joined NWAU AR-DRG price weight table if not missing; else 0.
A23	drg_pw_inlier	Inlier price weight	Inlier price weight from joined NWAU AR-DRG price weight table.
A24	drg_pw_lso_perdiem	Long-stay outlier per diem price weight	Long-stay outlier per diem price weight from joined NWAU AR-DRG price weight table if not missing; else 0.
A25	drg_adj_paed	Paediatric adjustment	Paediatric adjustment from joined NWAU AR-DRG price weight table.
A26-33	drg_adj_privpat_serv_JUR	Private patient service adjustment	Jurisdiction specific private patient service adjustment from joined NWAU AR-DRG price weight table.
A34	_drg_inscope_flag	DRG in-scope flag	1 if DRG is in-scope; else 0.
A35	adj_indigenous	See definition	Indigenous adjustment.
A36	adj_remoteness	See definition	Remoteness adjustment.
A37	adj_treat_remoteness	See definition	Patient treatment remoteness adjustment.
A38	adj_radiotherapy	See definition	Radiotherapy adjustment.
A39	adj_dialysis	See definition	Dialysis adjustment.
A40	adj_covid	See definition	COVID-19 treatment adjustment
A41	state_adj_privpat_accomm_sd	See definition	Private patient accommodation adjustment: same-day rate (state-specific adjustment).
A42	state_adj_privpat_accomm_on	See definition	Private patient accommodation adjustment: overnight per diem rate (state-specific adjustment).
A43	error_code	See definition	A brief description of errors, if any, which have occurred in the process of calculating the NWAU of an episode of care.
A44	_pat_eligible_icu_hours	Whole eligible hours spent in ICU	Total whole hours spent in intensive care (including below level 3 ICU if _pat_covid_flag = 1) unit if hours are greater than or equal to 1; else 0, for unbundled DRGs and eligible establishments
A45	_pat_los_icu_removed	See definition	Patient length of stay with ICU hours removed
A46	_pat_separation_category	See definition	Patient separation category: 1: Same-day patients 2: Short-stay outlier patients 3: Inlier patients 4: Long-stay outlier patients

Variable	Name	Description	Definition
A47	_w01	DRG by inlier/outlier weight	Based off _pat_separation_category: 1: drg_pw_sd 2: drg_pw_sso_base + drg_pw_sso_perdiem * pat_los_icu_removed 3: drg_pw_inlier 4: drg_pw_inlier + (pat_los_icu_removed - drg_inlier_ub) * drg_pw_iso_perdiem
A48	_w02	Application of the paediatric adjustment	_w01 * (1 + _pat_eligible_paed_flag * (drg_adj_paed))
A49	_w03	Application of the Indigenous and remoteness adjustment and COVID-19 treatment adjustment	_w02 * (1 + adj_indigenous + adj_remoteness + adj_radiotherapy + adj_dialysis) * (1 + adj_treat_remoteness)
A50	_w04	Application of the COVID-19 treatment adjustment	_w03 * (1 + adj_covid)
A51	_adj_icu	Application of the ICU rate adjustment	_pat_eligible_icu_hours * icu_rate
A52	An110mdc_ra	MDC v11.0	Major Diagnostic Category v11.0
A53-A100	HAC031cXXpYY	HAC Categories and subcategory flags	e.g. HAC031c01p01 = HAC 1.1 = Stage III Pressure Injury
A101	DRG11_Type	AR-DRG v11.0 Type	Intervention or Medical
A102	agegroup	Age Group	Age group in 5 year bands (e.g. Age 20-24)
A103	flag_ICUHours	See definition.	1 if episode has ICU Hours; else 0.
A104	flag_AdmTransfer	See definition	1 if episode is has admission mode = 'transfer'; else 0.
A105	Charlson_score	See definition.	Charlson Score
A106	Flag_instrument_use	See definition.	1 if instrument used during delivery; else 0.
A107	Flag_primiparity	See definition	1 if first pregnancy for woman under the age of 16 or over 35; else 0.
A108	Flag_PPOP	See definition.	1 if persistent posterior occiput position of fetus; else 0.
A109	Flag_foetal_distress	See definition.	1 if foetal distress during delivery; else 0.
A110	Flag_emergency	See definition.	1 if episode has emergency admission urgency; else 0.
A111	Gender	Female indicator of the patient	2 if female, otherwise 1
A112-A125	age_XXg	Age group for HACXX	The age group relevant for risk adjustment of HACXX.

Variable	Name	Description	Definition
A126-A138	mdc_XXg	MDC group for HACXX	The MDC group relevant for risk adjustment of HACXX.
A139-A151	cc_XXg	Charlson Comorbidity group for HACXX	The Charlson Comorbidity score group relevant for risk adjustment of HACXX.
A152-A165	HAC_pointsXX	See definition	Total complexity score for HACXX.
A166-A179	HAC_risk_categoryXX	See definition	Complexity group relevant to HACXX.
A180-A193	HAC_adj_XX	See definition	Funding adjustment relative to HACXX.
A194	HAC_adj	Adopted HAC funding adjustment	$\max(\text{HAC_adj_XX})$
A195	HAC031_flag	See definition	1 if episode has a HAC; else 0.
A196	hacgroup	See definition	HAC group adopted for funding adjustment.
A197-A235	AHR020cXXpYY	AHR categories and subcategory flags	e.g. AHR020c01p01 = AHR 1.1 = Stage III Pressure Injury
A236-A247	AHR_pointsXX	See definition	Total complexity score for AHRXX.
A248-A259	AHR_risk_categoryXX	See definition	Complexity group relevant to AHRXX.
A260-A271	AHR_adjXX	See definition	Funding adjustment relative to AHRXX.
A272	AHR_adj	Adopted AHR funding adjustment	$\max(\text{AHR_adj_XX})$
A273	AHR020_flag	See definition	1 if episode is the index episode for an avoidable readmission; else 0.
A274	w01_AHR	_w01 of the readmissions associated with this index episode	See _w01 [A47]
A275	GWAU23	Gross Weighted Activity Unit	$_w04 + _adj_icu$
A276	_adj_privpat_serv	Private patient service adjustment	$_pat_private_flag * drg_adj_privapat_serv * (_w01 + _adj_icu)$
A277	_adj_privpat_accom	Private patient accommodation adjustment	$_pat_private_flag * (_pat_same_day_flag * state_adj_private_accom_sd + (1 - _pat_same_day_flag) * _pat_los * state_adj_privpat_accomm_on)$
A278	riskAdjustment_HAC	NWAU deduction from HAC	$\text{if } _pat_covid_flag \neq 1, _w01 * \text{HAC_adj}$
A279	riskAdjustment_AHR	NWAU deduction from readmission index episode	$\text{If } _pat_covid_flag \neq 1, w01_AHR * AHR_adj$

Variable	Name	Description	Definition
A280	NWAU23	National Weighted Activity Unit	Max(0, GWAU23 - _adj_privpat_serv - _adj_privpat_accom - riskAdjustment_HAC - riskAdjustment_AHR) for only in-scope funding sources, set as necessary in the template.

Table 26: Admitted mental health care patients: variable definitions

Variable	Name	Description	Definition
M01	_est_eligible_paed_flag	Paediatric adjustment eligible establishment, derived from ICU paediatric eligibility table	1 if establishment is designated as eligible for paediatric adjustment; else 0.
M02	_treat_remoteness	Patient treatment remoteness Area	2016 ASGS remoteness area category of the patient treatment location taken from the hospitals geographic location information, where: 0 = major city 1 = inner regional 2 = outer regional 3 = remote 4 = very remote.
M03	_pat_remoteness	Patient residential remoteness Area	2016 ASGS remoteness area category of the patient location taken from the episode's geographical information in ranked order of preference: SA2, postcode or the hospital geographical indicator variable where: 0 = major city 1 = inner regional 2 = outer regional 3 = remote 4 = very remote.
M04	_pat_mh_flag	Mental health care patient flag	1 if care type = 11, else 0.
M05	_pat_gross_los	Gross length of stay	Max (0, (phase start date) - (phase end date))
M06	_pat_los	Length of stay	Max (0, (phase start date) - (phase end date) - (total leave days in phase));
M07	_pat_ind_flag	Indigenous patient flag	1 if patient Indigenous status = 1, 2 or 3; else 0.
M08	_pat_sameday_flag	Same-day flag	1 if phase start date = phase end date; else 0.
M09	_pat_age_years	Age at phase start (in years)	Total whole years from date of birth to phase start date.
M10	_pat_specpaed	Paediatric adjustment eligible patient	1 if (_pat_age_years between 0 and 17) and (est_eligible_paed_flag=1); else 0.
M11	_pat_private_flag	Private patient flag	1 if funding source = 9 or 13 for 2012-13 data and later. ²⁵

²⁵ Or 1 if funding source = 2 or 3 for 2011-12 data or earlier.

Variable	Name	Description	Definition
M12	_pat_public_flag	Public patient flag	1 if funding source = 1, 2 or 8 for 2012-13 data and later. ²⁶
M13	amhcc_inlier_lb	Inlier lower bound	Inlier lower bound from NWAU AMHCC price weight table.
M14	amhcc_inlier_ub	Inlier upper bound	Inlier upper bound from NWAU AMHCC price weight table.
M15	amhcc_pw_sso_base	Short-stay outlier base price weight	Short-stay outlier base price weight from joined NWAU AMHCC price weight table if not missing; else 0.
M16	amhcc_pw_sso_perdiem	Short-stay outlier per diem price weight	Short-stay outlier per diem price weight from joined NWAU AMHCC price weight table if not missing; else 0.
M17	amhcc_pw_inlier	Inlier price weight	Inlier price weight from joined NWAU AMHCC price weight table.
M18	amhcc_pw_iso_perdiem	Long-stay outlier per diem price weight	Long-stay outlier per diem price weight from joined NWAU AMHCC price weight table if not missing; else 0.
M19	priceCat	_w01 calculation category	0 for combined AMHCC classes 131, 141; else 1.
M20	amhcc_adj_privpat_serv	Private patient service adjustment	State level private patient service adjustment from joined NWAU AMHCC PPSA table. Determined by the patient's state and AMHCC.
M21	amhcc_adj_privpatNat	National private patient service adjustment	National private patient service adjustment joined from NWAU AMHCC PPSA table. Determined by the patient's AMHCC.
M22	adj_indigenous	See definition	Indigenous adjustment.
M23	adj_remoteness	See definition	Patient residence remoteness adjustment.
M24	adj_treat_remoteness	See definition	Patient treatment remoteness adjustment.
M25	adj_specpaed	See definition	Paediatric adjustment.
M26	state_adj_privpat_accommodation_sd	See definition	Private patient accommodation adjustment: same-day rate (state-specific adjustment).
M27	state_adj_privpat_accommodation_on	See definition	Private patient accommodation adjustment: overnight per diem rate (state-specific adjustment).
M28	error_code	See definition	Outlines Errors in calculations
M29	_pat_separation_category	See definition	Patient separation category: 2: Short-stay outlier patients 3: Inlier patients 4: Long-stay outlier patients

²⁶ Or 1 if funding source = 1, 10 or 11 for 2011-12 data or earlier.

Variable	Name	Description	Definition
M30	_w01	AMHCC by inlier/outlier weight	For combined AMHCC classes 131 and 141: $\text{amhcc_pw_sso_base} + _pat_los * \text{amhcc_lso_perdiem}$ Otherwise, based off _pat_separation_category: 2: $\text{amhcc_pw_sso_base} + \text{amhcc_pw_sso_perdiem} * _pat_los$ 3: amhcc_pw_inlier 4: $\text{amhcc_pw_inlier} + (_pat_los - \text{amhcc_inlier_ub}) * \text{amhcc_pw_lso_perdiem}$
M31	GWAU23	Gross Weighted Activity Unit	$_w01 * (\text{adj_specpaed}) * (1 + \text{adj_indigenous} + \text{adj_remoteness}) * (1 + \text{adj_treat_remoteness})$
M32	_adj_privpat_serv	Private patient service adjustment	$_pat_private_flag * \text{amhcc_adj_privpat_serv} * (_w01)$
M33	_adj_privpat_accom	Private patient accommodation adjustment	$_pat_private_flag * (_pat_same_day_flag * \text{state_adj_private_accom_sd} + (1 - _pat_same_day_flag) * _pat_los * \text{state_adj_privpat_accom_on})$
M34	NWAU23	National Weighted Activity Unit	$\text{Max}(0, \text{GWAU23} - _adj_privpat_serv - _adj_privpat_accom)$ for only in-scope funding sources, set as necessary in the template.

Table 25: Subacute admitted patients: variable definitions

Variable	Name	Description	Definition
S01	_pat_radiotherapy_flag	Flag indicating a patient with a radiotherapy procedure code. Either supplied in the input dataset or derived from the list of supplied procedure codes.	1 if patient had radiotherapy related treatment procedure; else 0.
S02	_pat_dialysis_flag	Flag indicating a patient with dialysis procedure code. Either supplied in the input dataset or derived from the list of supplied procedure codes.	1 if patient had a dialysis procedure; else 0.
S03	_treat_remoteness	Patient treatment remoteness area	2016 ASGS remoteness area category of the patient treatment location taken from the hospitals geographic location information, where: 0 = major city 1 = inner regional 2 = outer regional 3 = remote 4 = very remote.

Variable	Name	Description	Definition
S04	_pat_remoteness	Patient remoteness area	2016 ASGS remoteness area category of the patient location taken from the episode's geographical information in ranked order of preference: SA2, postcode, or the hospital geographical indicator variable where: 0 = major city 1 = inner regional 2 = outer regional 3 = remote 4 = very remote.
S05	_pat_subacute_flag	Subacute and non-acute patient flag	1 if care type = 2, 3, 4, 5, 6 or 88, else 0.
S06	_pat_los	Length of stay	Max (1, (date of separation) - (date of admission) - (total leave days)).
S07	_pat_sameday_flag	Patient same-day flag	1 if date of admission = date of separation; else 0.
S08	_pat_age_years	Age at admission (in years)	Total whole years from date of birth to date of admission.
S09	_pat_ind_flag	Indigenous patient flag	1 if patient Indigenous status = 1, 2 or 3; else 0.
S10	_pat_private_flag	Private patient flag	1 if funding source = 9 or 13 for 2012–13 data and later. ²⁷
S11	_pat_public_flag	Public patient flag	1 if funding source = 1, 2, 3 or 8 for 2012–13 data and later. ²⁸
S12	ansnap_type	See definition	AN-SNAP class type, as set out in Appendix I of the <i>National Efficient Price Determination 2023–24</i> .
S13	ansnap_samedaylist_flag	Same-day price list flag	1 if same-day price list variable from joined NWAU AN-SNAP price weight table equals 'Yes'; else 0.
S14	ansnap_inlier_lb	Inlier lower bound	Inlier lower bound from NWAU AN-SNAP price weight table.
S15	ansnap_inlier_ub	Inlier upper bound	Inlier upper bound from NWAU AN-SNAP price weight table.
S16	ansnap_pw_sd	Same-day price Weight	If the patient belongs to a same-day AN-SNAP Version 4.0 class then this is the same-day price weight obtained from the NWAU AN-SNAP price weight table. If the patient does not belong to such a class then this value is missing.

²⁷ Or 1 if funding source = 2 or 3 for 2011-12 data or earlier.

²⁸ Or 1 if funding source = 1, 10 or 11 for 2011-12 data or earlier.

Variable	Name	Description	Definition
S17	ansnap_pw_sso_perdiem	Short-stay outlier per diem price weight	If the patient does not belong to a same-day AN-SNAP Version 4.0 class then this is the short-stay outlier price weight obtained from the NWAU AN-SNAP price weight table. If the patient does belong to such a class then this value is missing.
S18	ansnap_pw_inlier	Inlier price weight	If the patient does not belong to a same-day AN-SNAP Version 4.0 class then this is the inlier price weight obtained from the NWAU AN-SNAP price weight table. If the patient does belong to such a class then this value is missing.
S19	ansnap_pw_lso_perdiem	Long-stay outlier per diem price weight	If the patient does not belong to a same-day AN-SNAP Version 4.0 class then this is long-stay outlier price weight obtained from the NWAU AN-SNAP price weight table. If the patient does belong to such a class then this value is missing.
S20	adj_indigenous	See definition	Indigenous adjustment.
S21	adj_remoteness	See definition	Remoteness adjustment.
S22	adj_treat_remoteness	See definition	Hospital treatment remoteness adjustment.
S23	adj_radiotherapy	See definition	Radiotherapy adjustment.
S24	adj_dialysis	See definition	Dialysis adjustment.
S25	caretype_adj_privpat_serv	See definition	Private patient service adjustment (adjustment specific to care type and state).
S26	caretype_adj_privpat_serv_state	See definition	Private patient service adjustment (adjustment specific to care type and state).
S27	state_adj_privpat_accomm_sd	See definition	Private patient accommodation adjustment: same-day rate (state-specific adjustment).
S28	state_adj_privpat_accomm_on	See definition	Private patient accommodation adjustment: overnight per diem rate (state-specific adjustment)
S29	Error_code	See definition	Outlines errors in calculations
S30	_pat_separation_category	See definition	Patient separation category: 1: Patients belonging to a same day AN-SNAP Version 4.0 class. 2: Short-stay outlier patients 3: Inlier patients 4: Long-stay outlier patients

Variable	Name	Description	Definition
S31	_w01	AN-SNAP inlier/outlier weight	Based off _pat_separation_category: 1: ansnap_pw_sd 2: ansnap_pw_sso_perdiem * pat_lo 3: ansnap_pw_inlier 4: ansnap_pw_inlier + (pat_lo - ansnap_inlier_ub) * ansnap_pw Iso_perdiem
S32	GWAU23	Gross weighted activity unit	_w01*(1+adj_indigenous+adj_remoteness+adj_radiot herapy+adj_dialysis)* (1+adj_treat_remoteness)
S33	_adj_privpat_serv	Private patient service adjustment	_pat_private_flag *caretype_adj_privpat_serv*(_w01)
S34	_adj_privpat_accom	Private patient accommodation adjustment	_pat_private_flag*(_pat_same-day_flag*state_adj_private_accom_sd+ (1- _pat_same-day_flag)* _pat_lo*state_adj_privpat_accomm_on)
S35	NWAU23	National Weighted Activity Unit	Max(0, GWAU23 - _adj_privpat_serv- _adj_privpat_accomm) for only in-scope funding sources, set as necessary in the template.

Table 26: Emergency department: variable definitions

Variable	Name	Description	Definition
E01	_treat_remoteness	Patient treatment remoteness area	2016 ASGS remoteness area category of the patient treatment location taken from the hospitals geographic location information, where: 0 = major city 1 = inner regional 2 = outer regional 3 = remote 4 = very remote.
E02	_pat_remoteness	Patient remoteness area	2016 ASGS remoteness area category of the establishment location taken from patient postcode, ASGS, or the hospital geographical indicator variable, where: 0 = major city 1 = inner regional 2 = outer regional 3 = remote 4 = very remote.
E03	UDG	UDG Version 1.3	A classification system which may be used to assign a price weight to an emergency department episode of care. This variable may either be supplied by the user or derived from DSS variables: type of visit to emergency care, triage category, and episode end status. See IHACPA website for details.

Variable	Name	Description	Definition
E04	AECC	AECC Version 1.0	A classification system which may be used to assign a price weight to an emergency department episode of care. This variable must be supplied by the user.
E05	_pat_ind_flag	Indigenous patient flag	1 if patient Indigenous status = 1, 2 or 3; else 0.
E06	UDG_PW	Price weight depending on choice of classification	UDG price weight, taken from the NWAU UDG price weight table.
E07	AECC_PW		Australian Emergency Care Classification (AECC) Version 1.0 price weight, taken from the NWAU AECC price weight table.
E08	adj_indigenous	See definition	Indigenous adjustment.
E09	adj_remoteness	See definition	Patient residence remoteness adjustment.
E10	adj_treat_remoteness	See definition	Patient treatment remoteness adjustment.
E11	Error_Code	See definition	Outlines errors in calculations.
E12	_w01	Base predicted	Adopt UDG_PW, or AECC_PW depending on classification selection.
E13	GWAU23	Gross Weighted Activity Unit	$_w01 * (1 + \text{adj_indigenous} + \text{adj_remoteness}) * (1 + \text{adj_treat_remoteness})$.
E14	NWAU23	National Weighted Activity Unit	GWAU23 for in-scope patients only (that is, non Department of Veterans' Affairs and compensable patients).

Table 27: Non-admitted: variable definitions

Variable	Name	Description	Definition
N01	clinic_pw	See definition	Tier 2 class price weight, taken from NWAU price weight table.
N02	Tier2_adj_paed	Paediatric loading	Tier 2 class paediatric loading, taken from NWAU price weight table.
N03	_treat_remoteness	Patient treatment remoteness area	2016 ASGS remoteness area category of the patient treatment location taken from the hospitals geographic location information, where: 0 = major city 1 = inner regional 2 = outer regional 3 = remote 4 = very remote.
N04	adj_treat_remoteness	See definition	Patient treatment remoteness adjustment.

Variable	Name	Description	Definition
N05	_pat_remoteness	Patient residential remoteness area	2016 ASGS remoteness area category of the patient's residence as inferred from the following variables, ranked in descending order of preference: SA2, postcode, _treat_remoteness. The values of this variable are: 0 = major city 1 = inner regional 2 = outer regional 3 = remote 4 = very remote.
N06	_est_eligible_paed_flag	Specialist paediatric flag	1 if the hospital is on the specialist paediatric list, as per the NEP Determination, else 0.
N07	_pat_eligible_paed_flag	Patient paediatric flag	1 if _est_eligible_paed_flag is 1 and patient age < 18, else 0.
N08	_pat_ind_flag	Indigenous patient flag	1 if patient Indigenous status = 1, 2 or 3; else 0.
N09	adj_indigenous	See definition	Indigenous adjustment.
N10	adj_remoteness	See definition	Patient residence remoteness adjustment.
N11	Error_code	See definition	Outlines errors in calculations.
N12	GWAU23	Gross Weighted Activity Unit	$\text{clinic_pw} * \text{tier2_adj_paed} * (1 + \text{adj_indigenous} + \text{adj_remoteness} + \text{adj_multiprov}) * (1 + \text{adj_treat_remoteness})$ <p>Where tier2_adj_paed only applies when _pat_eligible_paed_flag = 1, and adj_multiprov only applies when event has multiprovider indicator.</p>
N13	NWAU23	National Weighted Activity Unit	GWAU23 for in-scope funding sources set as necessary in the template.

Appendix C: Summary of input data

Table 28: Summary of 2019–20 and 2020–21 patient-costed NHCDC data (Hospitals used for cost modelling)

	Establishments			Activity (Separations/episodes)*			Total reported in-scope cost		
	2019–20	2020–21	% Change	2019–20	2020–21	% Change	2019–20	2020–21	% Change
Admitted acute	249	249	0.0%	6.1M	6.3M	3.2%	\$31.4B	\$32.4B	3.2%
Admitted mental health	143	151	5.6%	113.7K	110.8K	-2.5%	\$2.1B	\$2.1B	1.6%
Emergency	196	194	-1.0%	7.9M	8.1M	3.1%	\$5.9B	\$6.2B	5.3%
Non-admitted	246	242	-1.6%	23.9M	28.2M	18.3%	\$8.0B	\$9.4B	16.7%
Subacute	242	244	0.8%	166.4K	171.2K	2.9%	\$2.8B	\$3.0B	8.7%

Note: Only the NHCDC activity is used in the non-admitted cost model.

Table 29: Summary of 2019–20 and 2020–21 population data (Hospitals used for cost modelling)

	Establishments			Activity (separations/episodes)*		
	2019–20	2020–21	% Change	2019–20	2020–21	% Change
Admitted acute	268	274	2.2%	6.2M	6.5M	4.3%
Admitted mental health	180	191	6.1%	151.8K	155.2K	2.2%
Emergency	203	204	0.5%	8.0M	8.7M	8.4%
Non-admitted						
Subacute	256	260	1.6%	192.3K	187.9K	-2.3%

Table 30: Costed (NHCDC) sample as proportion of total population

	Establishments		Activity (separations)	
	2019–20	2020–21	2019–20	2020–21
Admitted acute	92.9%	90.9%	97.1%	96.0%
Admitted mental health	79.4%	79.1%	74.9%	71.4%
Emergency	96.6%	95.1%	95.8%	93.1%
Non-admitted				
Subacute	91.8%	92.3%	77.8%	77.0%

Note: Only the NHCDC activity is used in the non-admitted cost model.

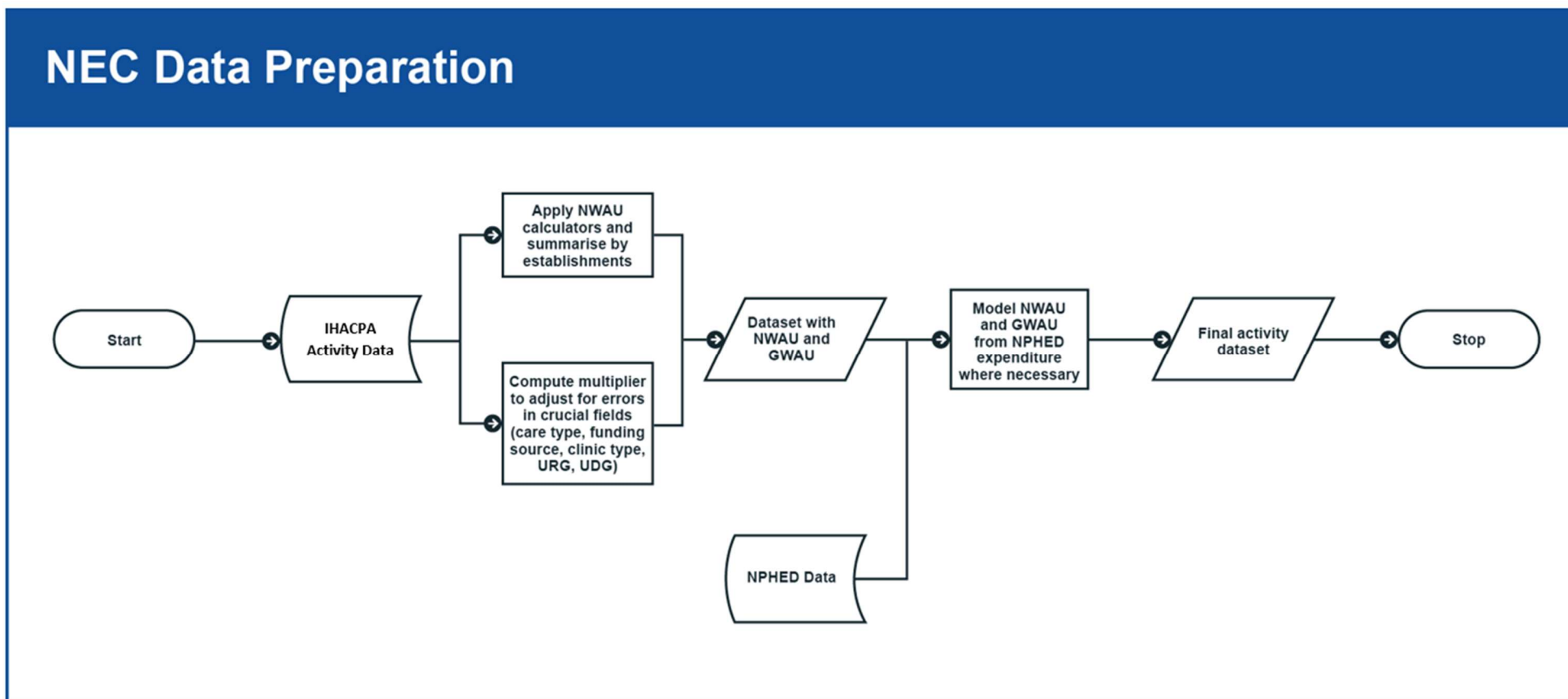
Appendix D: List of AR-DRGs adopting the L1.5 H1.5 methodology

Table 31: List of AR-DRGs adopting the L1.5 H1.5 methodology

AR-DRG	Description
E60B	Cystic Fibrosis, Minor Complexity
E76A	Respiratory Tuberculosis, Major Complexity
F13A	Amputation, Upper Limb and Toe, for Circulatory Disorders, Major Complexity
F61A	Infective Endocarditis, Major Complexity
I02A	Microvascular Tissue Transfers or Skin Grafts, Excluding Hand, Major Complexity
I07Z	Amputation
I12A	Misc Musculoskeletal Procs for Infect/Inflam of Bone/Joint, Major Complexity
I31A	Revision of Hip Replacement, Major Complexity
P03A	Neonate, Admission Weight 1000-1499g with Significant GI or Ventilation >= 96 Hours, Major Complexity
P04A	Neonate, Admission Weight 1500-1999g with Significant GI or Ventilation >= 96 Hours, Major Complexity
P05A	Neonate, Admission Weight 2000-2499g with Significant GI or Ventilation >= 96 Hours, Major Complexity
P05B	Neonate, Admission Weight 2000-2499g with Significant GI or Ventilation >= 96 Hours, Minor Complexity
P06A	Neonate, Admission Weight >= 2500g with Significant GI or Ventilation >= 96 Hours, Major Complexity
P06B	Neonate, Admission Weight >= 2500g with Significant GI or Ventilation >= 96 Hours, Minor Complexity
P66A	Neonate, Admission Weight 2000-2499g without Significant GI or Ventilation >= 96 Hours, Extreme Complexity
T01A	Infectious and Parasitic Diseases with GIs, Major Complexity
U62A	Paranoia and Acute Psychotic Disorders, Major Complexity
U66A	Eating and Obsessive-Compulsive Disorders, Major Complexity
W04A	Multiple Significant Trauma with Other GIs, Major Complexity
Y01Z	Ventilation >= 96 Hours or Tracheostomy for Burns or GI for Severe Full Thickness Burns
Y02A	Skin Grafts for Other Burns, Major Complexity

Appendix E: NEC23 data preparation

Table 32: National Efficient Cost 2023–24 data preparation





IHACPA

Independent Health and Aged Care Pricing Authority

Level 12, 1 Oxford Street
Sydney NSW 2000

Phone 02 8215 1100

Email enquiries.ihacpa@ihacpa.gov.au

Twitter [@IHACPAnews](https://twitter.com/IHACPAnews)

www.ihacpa.gov.au