

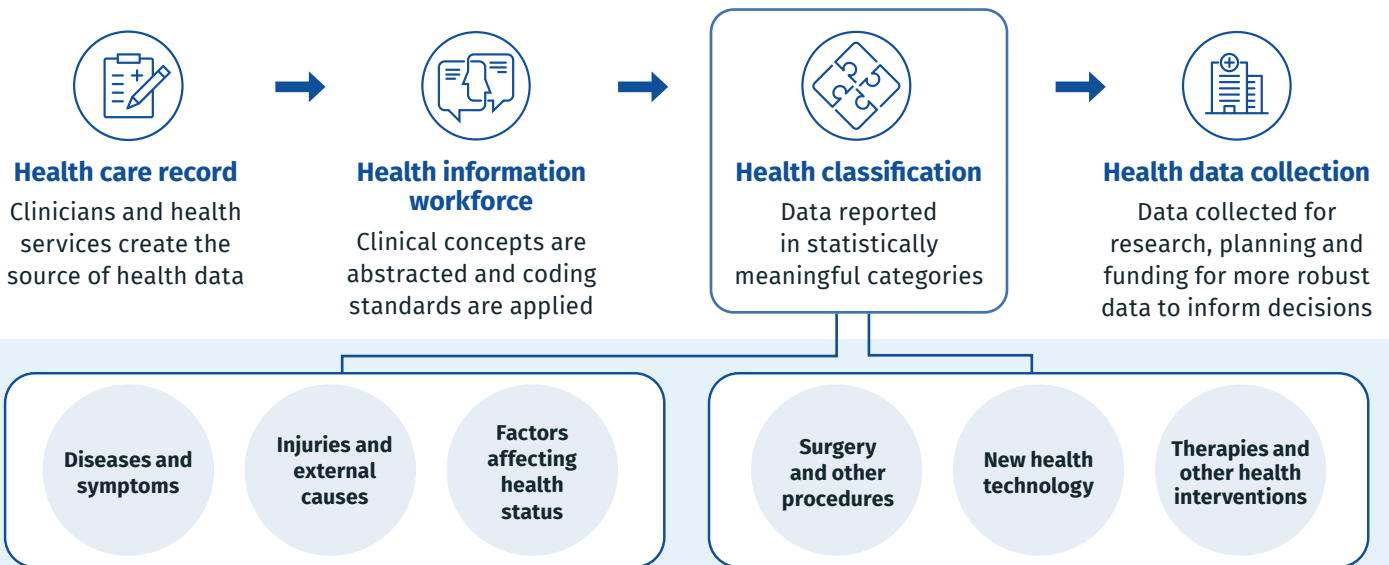
ICD-10-AM/ACHI/ACS fact sheet

The Independent Health and Aged Care Pricing Authority (IHACPA) is responsible for the development of the ICD-10-AM/ACHI/ACS classification system that comprises the:

- International Statistical Classification of Diseases and Related Health Problems, Tenth Revision, Australian Modification (ICD-10-AM)
- Australian Classification of Health Interventions (ACHI)
- Australian Coding Standards (ACS).

Classifying disease and health interventions

The classification of diseases and interventions is performed by clinical coders and health information managers in health services across Australia for the purpose of collecting information on morbidity.



Classifying diseases with ICD-10-AM

Code	Description of code
★ K57.32	<i>Diverticulitis of large intestine without perforation, abscess or mention of haemorrhage</i>
Category	K57 <i>Diverticular disease of intestine</i>
Block	K55-K64 <i>Other diseases of intestines</i>
Chapter	K00-K93 <i>Chapter 11: Diseases of the digestive system</i>
Symbol	Indicates Australian modification to ICD-10

Classifying interventions with ACHI

Code	Description of code
32003-01 [913]	<i>Right hemicolectomy with anastomosis</i>
Block	[913] <i>Colectomy</i>
Extensions	-00 <i>Limited excision of large intestine with anastomosis</i> -01 <i>Right hemicolectomy with anastomosis</i> -02 <i>Laparoscopic limited excision of large intestine with anastomosis</i> -03 <i>Laparoscopic right hemicolectomy with anastomosis</i>
Medicare Benefits Schedule (MBS) description*	32003 <i>Large intestine, resection of, with anastomosis, including right hemicolectomy</i>

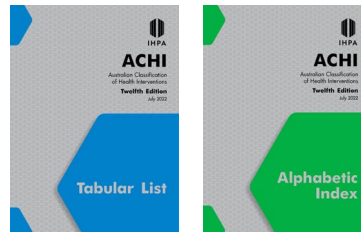
*Note: The first five characters of some ACHI codes align with MBS item numbers

ICD-10-AM/ACHI/ACS classification system

The ICD-10-AM/ACHI/ACS classification system is used in hospitals across Australia to classify clinical activity associated with admitted patients.



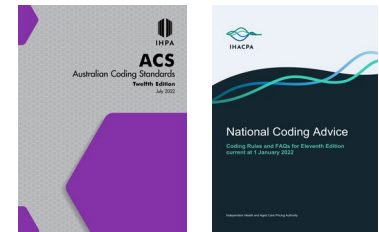
ICD-10-AM is an expanded version of the World Health Organization's disease classification ICD-10. It uses an alphanumeric coding scheme structured by body system and aetiology. The code system comprises three, four and five character categories with Australian modifications marked by a unique symbol.



ACHI is based on the Medicare Benefits Schedule (MBS) and further expanded to cover interventions not part of the MBS such as dental, allied health interventions, cosmetic surgery.

It uses a numeric coding scheme structured by body system, site and intervention type. ACHI codes have seven numeric digits.

For most codes the first five digits are the MBS item number, followed by a two-digit extension.



The ACS support sound coding convention for use with ICD-10-AM and ACHI.

The ongoing revision of the ACS ensures that standards reflect changes in clinical practice and requirements of admitted patient data collections.

National Coding Advice consists of Coding Rules that are released quarterly to provide additional guidance on specific classification topics.

Statistical health classifications

Key facts about the design of statistical health classifications and how disease and health interventions are reported nationally.

Designed using principles and developed with technical and clinical input

Fit-for-purpose and developed for the Australian healthcare system

Trained clinical coders and health information managers apply and interpret coded health data

Alphabetic Index lists diagnostic terms to locate the clinical concept and contains many more terms than the Tabular List

Tabular List includes additional terms, notes and instructions to allocate the correct code


The Australian Coding Standards and National Coding Advice guide nationally consistent code allocation

Further information

To learn more about the Independent Health and Aged Care Pricing Authority, get in touch with us via the details below.

 (02) 8215 1100  enquiries.ihacpa@ihacpa.gov.au  www.ihacpa.gov.au

Find us online to connect with us.

 Independent Health and Aged Care Pricing Authority

   @IHACPA