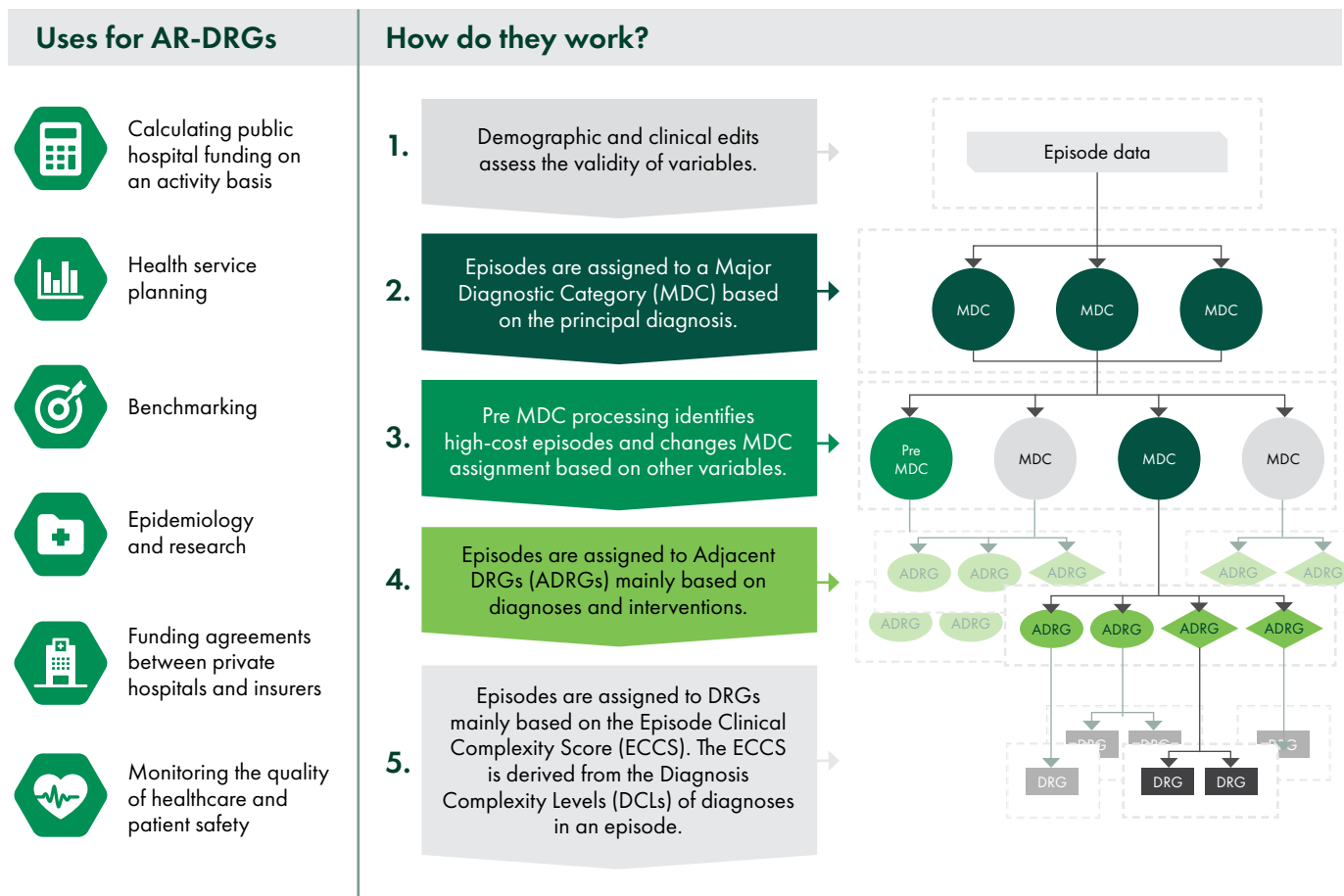


Australian Refined Diagnosis Related Groups overview and Version 11.0 development

The Independent Hospital Pricing Authority (IHPA) is responsible for the development of the classification systems that provide the healthcare sector with a nationally consistent method of classifying all types of patients, their treatment and associated costs across six patient service categories.

The [Australian Refined Diagnosis Related Groups](#) (AR-DRG) classification provides a clinically meaningful way to relate or group the number and type of patients treated in admitted acute episodes of care to the resources required in treatment.

AR-DRGs use diagnosis and intervention codes with other routinely collected data to classify admitted patient episodes.



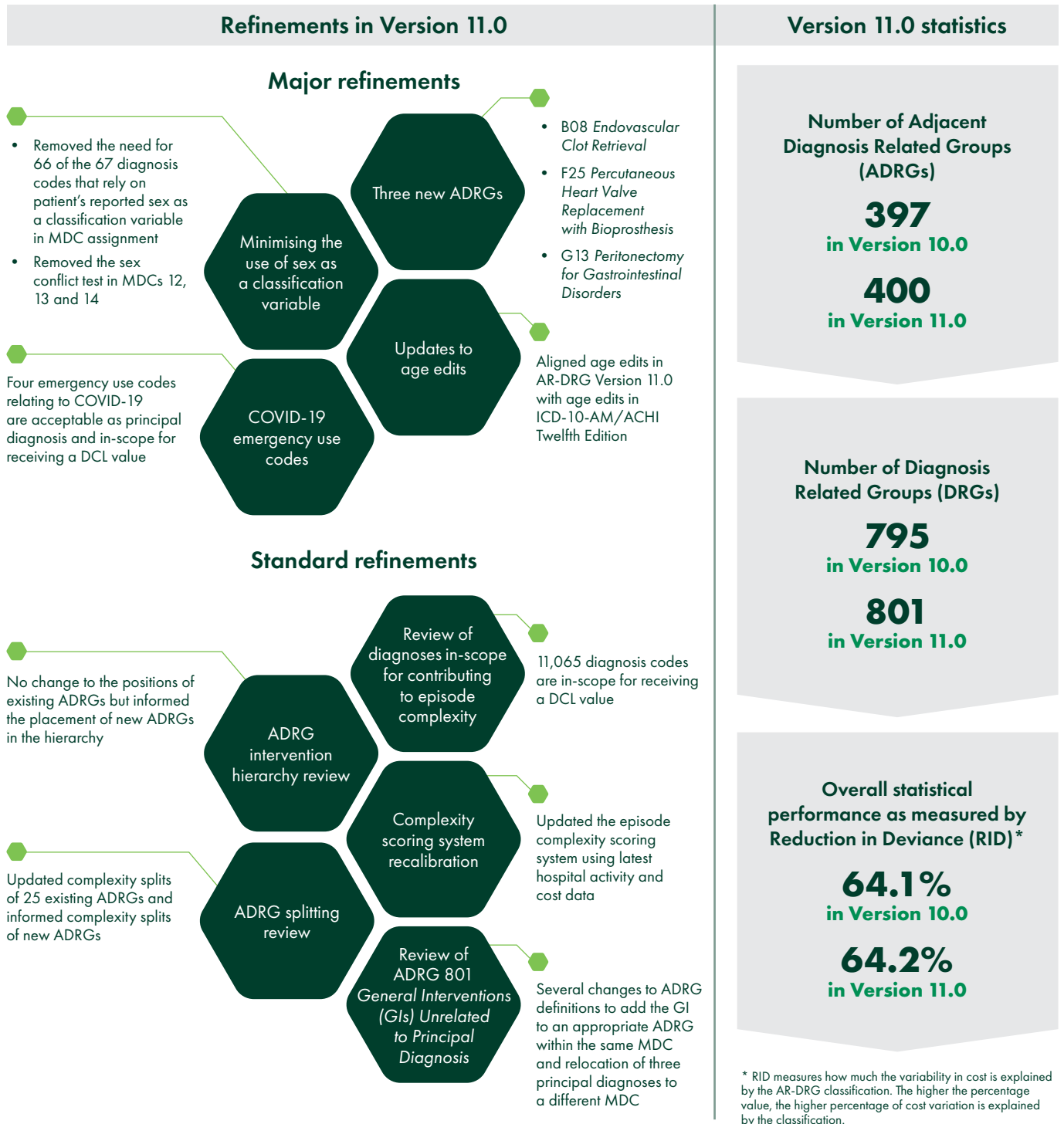
Types of Diagnosis Related Groups (DRGs)

	DRGs in Version 11.0	Description	Example
Pre MDC	9 DRGs	High-cost episodes	A13A Ventilation >= 336 Hours, Major Complexity
No splits	83 DRGs	DRG is assigned without the use of complexity score	L61Z Haemodialysis
Split on complexity	700 DRGs	DRG is assigned using a complexity score	G02B Major Small and Large Bowel Interventions, Intermediate Complexity
Split on other variables	9 DRGs	DRGs using other variables such as transfer status and length of stay	B70D Stroke and Other Cerebrovascular Disorders, Transferred < 5 Days

AR-DRG Version 11.0

AR-DRG Version 11.0 was released in July 2022 and has been developed in accordance with the [Governance Framework for the Development of the Admitted Care Classifications](#), following clinical and statistical analysis and consultation with clinicians, jurisdictions and other health sector stakeholders.

Interactive AR-DRG Version 11.0 education modules are available on [IHPA Learn](#).



For more information about AR-DRG Version 11.0 visit www.ihpa.gov.au/publications/ar-drg-version-110

<p> +61 2 8215 1100</p> <p> enquiries.ihpa@ihpa.gov.au</p>	<p> Independent Hospital Pricing Authority</p> <p> www.ihpa.gov.au</p>	<p> @IHPAnews</p> <p> IhpaGovAu</p>
--	---	-------------------------------------