

The National Hospital Cost Data Collection (NHCDC) is an annual collection of hospital cost data at the line-item level. NHCDC data are provided to the Independent Hospital Pricing Authority (IHPA) from each jurisdiction's Department of Health.

The Round 22 NHCDC collected public hospital cost information for the 2017–18 financial year. The NHCDC Cost Report contains detailed summary tables of all reported figures.

## What is the cost of Australia's mental health care patients?

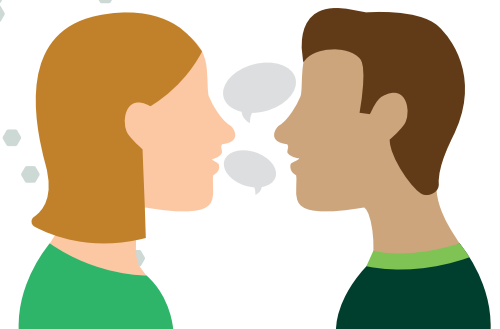
For Round 22 of the NHCDC, IHPA is reporting mental health costs for using the Australian Mental Health Care classification (AMHCC). The change reflects the recent introduction of the new Australian Mental Health Care Classification (AMHCC).

Prior to Round 21, mental health costs were reported as part of the admitted acute activity care type.

In the Australian hospital system, mental health care is provided to patients in both admitted and community settings.

The admitted setting includes consumers who are formally admitted for treatment in a general ward or a designated psychiatric unit in a general or a psychiatric hospital.

The community setting includes mental health care services delivered to consumers who are not admitted to an inpatient facility or reside in a residential mental health care facility.



The national total cost submitted to the NHCDC for mental health care patient activity was

**2.39**  
billion

**5.1%**

This represents 5.1% of total hospital expenditure reported in the NHCDC in Round 22.

**Under the Australian Mental Health Care Classification (AMHCC), all mental health care patients are assigned a phase of care.**

There are five phases (see right), and each reflects the primary goal of care as determined by the treating professional.

### Mental health phase of care

### Goal of care

**Acute**

Reduce intensity of symptoms and manage risk associated with mental illness

**Functional gain**

Improvement in functioning by gaining confidence and mastery in self-management, psychosocial adaptation and vocational performance through structured training and therapy

**Intensive extended**

Symptom mitigation/functional improvement/relapse prevention strategy development

**Consolidating gain  
Assessment only**

Plateau of symptoms and maintenance of functioning

Information gathering to enable assessment of a consumer or potential referral for treatment services if required

# 193,158

The data contains detailed cost information for 193,158 mental health care patient separations.

> Taken together, mental health care accounted for 0.5% of all hospital patient activity reported to Round 22 of the NHCD.

>

>

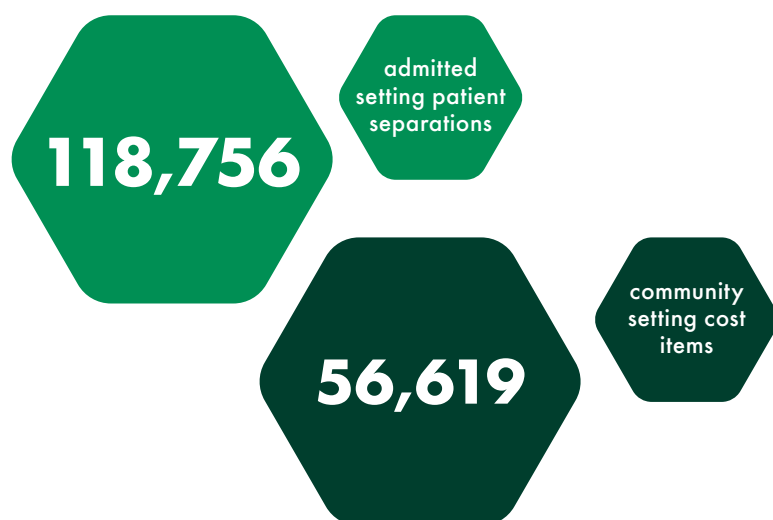
>

>

>

# 0.5 PERCENT

Mental health care is provided to patients in both admitted and community settings. In Round 22, there were:



In Round 22 of the NHCD, 234 hospitals submitted mental health care cost data.



These hospitals were identified by the reported patient care types

The national average cost per admitted mental health patient separation was

# \$12,348