



Australian Refined Diagnosis Related Groups Version 6.x

© Commonwealth of Australia 2012

This work is copyright. Apart from any use as permitted under the Copyright Act 1968, no part may be reproduced by any process without prior written permission from the Commonwealth. Requests and inquiries concerning reproduction and rights and any information regarding this publication should be directed to:

Executive Director, ABF
IHPA
PO Box 483
Darlinghurst NSW 1300

or email: enquiries.iHPA@iHPA.gov.au

Australian Refined Diagnosis Related Groups, Version 6.x, Addendum

Produced by the National Casemix and Classification Centre, Australian Health Services Research Institute, University of Wollongong.

Table of contents

Figures and tables	iv
1. Acknowledgements	1
2. Abbreviations	2
3. Introduction	4
3.1 Background	4
3.2 Changes from AR-DRG V6.0 to AR-DRG V6.x	5
3.3 Guide for the use of this addendum	8
3.4 Symbols and conventions	10
3.5 Feedback	10
4. AR-DRG Definitions	27
4.1 MDC 09 Diseases and disorders of the skin, subcutaneous tissue and breast	27
4.2 MDC 14 Pregnancy, childbirth and the puerperium	35
4.3 MDC 19 Mental diseases and disorders	45
4.4 MDC 20 Alcohol/drug use and alcohol/ drug induced organic mental disorders	50

Figures and tables

TABLE 3.1	History of the development of the Australian DRG classification	4
TABLE 3.2	Changes from AR-DRG V6.0 to AR-DRG V6.x.....	6
TABLE 3.3	Number of Diagnosis Related Groups by Major Diagnostic Category in the Australian DRG classification Versions 5.2, 6.0 and 6.x.....	7
TABLE 3.4	ADRGs Affected by AR-DRG V6.x Changes.....	9
TABLE 3.5	List of Australian Refined Diagnosis Related Groups Version 6.x	11
FIGURE 3.1	Guide for the use of this addendum	8

1. Acknowledgements

The Independent Hospital Pricing Authority is committed to providing the Australian health care industry with a nationally consistent method of classifying all types of patients, their treatment and associated costs. Consequently, resources continue to be devoted to the ongoing development of a Diagnosis Related Groups (DRG) classification system based on local clinical practice.

DRG development would not be possible if it were not for the willing collaboration of clinicians, clinical coders, representatives from state and territory health departments, and other interested parties.

2. Abbreviations

Note: Due to a limitation on the number of characters in DRG names, some words may have multiple abbreviations. For example Procedures has been abbreviated to Pr, Proc and Procs.

ABF	Activity based funding
ACHI	Australian Classification of Health Interventions
ACS	Australian Coding Standards
Adm	Admitted
AdmWt	Admission weight
ADRG	Adjacent Diagnosis Related Group
ADX	Additional (secondary) diagnosis
AICD	Automatic implantable cardioverter defibrillator
AMI	Acute myocardial infarction
AN-DRG	Australian National Diagnosis Related Groups
AR-DRG	Australian Refined Diagnosis Related Groups
Cat	Catastrophic
CC	Complication and/or comorbidity
CCL	Complication and comorbidity level
CDE	Common duct exploration
Circ	Circulatory
CPB	Cardiopulmonary bypass
Disd	Disorder
DRG	Diagnosis Related Group
DX	Diagnosis
ECMO	Extracorporeal membrane oxygenation
ECT	Electro convulsion therapy
EEG	Electroencephalograph
ERCP	Endoscopic retrograde cholangiopancreatography
ESW	Extra-corporeal shockwave
Ex	Excluding
Excep	Except
Excl	Excluding
GI	Gastrointestinal
HIV	Human immunodeficiency virus
ICD-9-CM	The International Statistical Classification of Diseases and Related Health Problems, 9th Revision, Clinical Modification
ICD-10-AM	The International Statistical Classification of Diseases and Related Health Problems, 10th Revision, Australian Modification
Incl	Including
Infect	Infection
Inflam	Inflammation

Inves	Investigation
LOS	Length of stay
Malig	Malignancy
MDC	Major Diagnostic Category
MHLS	Mental health legal status
Microvas	Microvascular
Misc	Miscellaneous
Mod	Moderate
Mult	Multiple
Multi	Multiple
OR	Operating room
PCCL	Patient clinical complexity level
PDX	Principal diagnosis
Pr	Procedures
Proc	Procedures
Procs	Procedures
Psych	Psychotic
Reconstruct	Reconstructive
Sev	Severe
Signif	Significant
Sys	System
Tfr	Transfer
TIA	Transient ischemic attack
Tiss	Tissue
Trach	Tracheostomy
Transf	Transfer
URI	Upper respiratory tract infection
V	Version
Vent	Ventilation
W	With
W/O	Without

3. Introduction

3.1 Background

Diagnosis Related Groups (DRG) offer a method whereby episodes of care (for admitted hospital patients) may be categorised and measured. For this method to remain valid it needs to be modified from time to time, in line with changes to medical, surgical and coding practices (Commonwealth Department of Health and Aged Care, 1998).

Australian Refined Diagnosis Related Groups Version 6.0 (AR-DRG V6.0) was released in November 2008. During 2010 and 2011 the Australian health care system underwent significant reform, a major component of which was the introduction of national activity based funding (ABF). The Australian Government commissioned a review of the existing AR-DRG V6.0 in April 2011. The purpose of this was to ascertain its suitability for use in national ABF for public hospital inpatient services in the 2012/13 financial year. The next update version, (V7.0), was under development at the time and not due for release until late 2012.

The major outcome of this review was the recommendation that some DRG splits that had been collapsed in the transition from AR-DRG V5.2 to AR-DRG V6.0 be reinstated. These changes were accepted, and the specifications for a post-grouping application (AR-DRG V6.x) were released in September 2011.

TABLE 3.1 History of the development of the Australian DRG classification

DRG classification	Release date	ICD coding system / implementation date
AN-DRG V1.0	Jul 1992	ICD-9-CM / Oct 1991 (USA)
AN-DRG V2.0	Jul 1993	ICD-9-CM / Oct 1992 (USA)
AN-DRG V2.1	Jul 1994	ICD-9-CM / Oct 1993 (USA)
AN-DRG V3.0	Jul 1995	ICD-9-CM 1 st edition / Jul 1995 (Aust)
AN-DRG V3.1	Jul 1996	ICD-9-CM 2 nd edition / Jul 1996 (Aust)
AN-DRG V3.2 ^(a)	Dec 1997	ICD-9-CM 2 nd edition / Jul 1996 (Aust)
AR-DRG V4.0	Jul 1998	ICD-9-CM 2 nd edition / Jul 1996 (Aust)
AR-DRG V4.1	Dec 1998	ICD-10-AM 1 st edition / Jul 1998 (Aust)
AR-DRG V4.2	Dec 2000	ICD-10-AM 2 nd edition / Jul 2000 (Aust)
AR-DRG V5.0	Sep 2002	ICD-10-AM 3 rd edition / Jul 2002 (Aust)
AR-DRG V5.1	Sep 2004	ICD-10-AM 4 th edition / Jul 2004 (Aust)
AR-DRG V5.2	Sep 2006	ICD-10-AM/ACHI 5 th edition / Jul 2006 (Aust)
AR-DRG V6.0	Nov 2008	ICD-10-AM/ACHI 6 th edition / Jul 2008 (Aust)
AR-DRG V6.x ^(b)	Sep 2011	ICD-10-AM/ACHI 6 th edition / Jul 2008 (Aust)

(a) Optional version with similar logic to AN-DRG V3.1 produced by some developers

(b) An interim version of AR-DRG V6.0 to update some DRGs for Australian ABF purposes

This addendum provides the details of the changed DRG splits in AR-DRG V6.x. As the changes affect only a limited number of Adjacent Diagnosis Related Groups (ADRG) within four Major Diagnostic Categories (MDC), it is recommended that the AR-DRG V6.0 Definitions Manual remain the primary reference tool to understand the assignment of DRG in AR-DRG V6.x. This addendum should only be referenced to obtain information about grouping in the affected ADRGs.

3.2 Changes from AR-DRG V6.0 to AR-DRG V6.x

AR-DRG V6.x uses the Sixth Edition of ICD-10-AM/ACHI, and modifications to AR-DRG V6.0 as a baseline. The MDC names and ADRG numbering convention is the same as for AR-DRG V6.0. The changes that appear in AR-DRG V6.x are for selected DRGs (see below), and represent the re-introduction of DRG splits in AR-DRG V5.2 (see Table 3.2). Table 3.3 shows the number of DRGs for AR-DRG V6.x compared to previous versions.

MDC 09 Diseases and disorders of skin, subcutaneous tissue and breast

- Splits for malignant vs non-malignant disease for J06 and J07.

MDC 14 Pregnancy, childbirth and the puerperium

- An additional patient clinical complexity level (PCCL) split for O01.
- PCCL and diagnosis splits for O60.
- Splits for gestation and PCCL for O64.
- A same day split for O66.

MDC 19 Mental diseases and disorders

- A split for mental health legal status for U61.
- A combination age and PCCL split for U63.

MDC 20 Alcohol/drug use and alcohol/drug induced organic mental disorders

- A PCCL split for V60.

TABLE 3.2 Changes from AR-DRG V6.0 to AR-DRG V6.x

MDC	AR-DRG V6.0	AR-DRG V6.x
09	J06Z <i>Major Procedures for Breast Conditions</i>	J06A <i>Major Procedures for Malignant Breast Conditions</i> J06B <i>Major Procedures for Non-Malignant Breast Conditions</i>
	J07Z <i>Minor Procedures for Breast Conditions</i>	J07A <i>Minor Procedures for Malignant Breast Conditions</i> J07B <i>Minor Procedures for Non-Malignant Breast Conditions</i>
	O01A <i>Caesarean Delivery W Catastrophic or Severe CC</i> O01B <i>Caesarean Delivery W/O Catastrophic or Severe CC</i>	O01A <i>Caesarean Delivery W Catastrophic CC</i> O01B <i>Caesarean Delivery W Severe CC</i> O01C <i>Caesarean Delivery W/O Catastrophic or Severe CC</i>
	O60Z <i>Vaginal Delivery</i>	O60A <i>Vaginal Delivery W Catastrophic or Severe CC</i> O60B <i>Vaginal Delivery W/O Catastrophic or Severe CC</i> O60C <i>Vaginal Delivery Single Uncomplicated W/O Other Condition</i>
14	O64Z <i>False Labour</i>	O64A <i>False Labour Before 37 Weeks or W Catastrophic CC</i> O64B <i>False Labour After 37 Weeks W/O Catastrophic CC</i>
	O66Z <i>Antenatal and Other Obstetric Admission</i>	O66A <i>Antenatal and Other Obstetric Admission</i> O66B <i>Antenatal and Other Obstetric Admission, Sameday</i>
	U61Z <i>Schizophrenia Disorders</i>	U61A <i>Schizophrenia Disorders W Mental Health Legal Status</i> U61B <i>Schizophrenia Disorders W/O Mental Health Legal Status</i>
	U63Z <i>Major Affective Disorders</i>	U63A <i>Major Affective Disorders Age >69 or W (Catastrophic or Severe CC)</i> U63B <i>Major Affective Disorders Age <70 W/O Catastrophic or Severe CC</i>
20	V60Z <i>Alcohol Intoxication and Withdrawal</i>	V60A <i>Alcohol Intoxication and Withdrawal W CC</i> V60B <i>Alcohol Intoxication and Withdrawal W/O CC</i>

TABLE 3.3 Number of Diagnosis Related Groups by Major Diagnostic Category in the Australian DRG classification Versions 5.2, 6.0 and 6.x

Major Diagnostic Category		AR-DRG		
		Version 5.2	Version 6.0	Version 6.x
Pre	Major procedures - principal diagnosis associated with any MDC	12	17	17
01	Diseases and disorders of the nervous system	53	61	61
02	Diseases and disorders of the eye	20	19	19
03	Diseases and disorders of the ear, nose, mouth and throat	28	27	27
04	Diseases and disorders of the respiratory system	42	47	47
05	Diseases and disorders of the circulatory system	67	80	80
06	Diseases and disorders of the digestive system	52	46	46
07	Diseases and disorders of the hepatobiliary system and pancreas	29	28	28
08	Diseases and disorders of the musculoskeletal system and connective tissue	79	83	83
09	Diseases and disorders of the skin, subcutaneous tissue and breast	29	34	36
10	Endocrine, nutritional and metabolic diseases and disorders	19	28	28
11	Diseases and disorders of the kidney and urinary tract	37	37	37
12	Diseases and disorders of the male reproductive system	19	16	16
13	Diseases and disorders of the female reproductive system	20	18	18
14	Pregnancy, childbirth and the puerperium	17	14	19
15	Newborns and other neonates	25	25	25
16	Diseases and disorders of the blood and blood forming organs and immunological disorders	10	9	9
17	Neoplastic disorders (haematological and solid neoplasms)	18	18	18
18	Infectious and parasitic diseases	17	18	18
19	Mental diseases and disorders	13	11	13
20	Alcohol/drug use and alcohol/drug induced organic mental disorders	8	6	7
21	Injuries, poisoning and toxic effects of drugs	24	29	29
22	Burns	8	8	8
23	Factors influencing health status and other contacts with health services	13	13	13
	Unrelated OR DRGs	0	3	3
	Error DRGs	6	3	3
Total		665	698	708

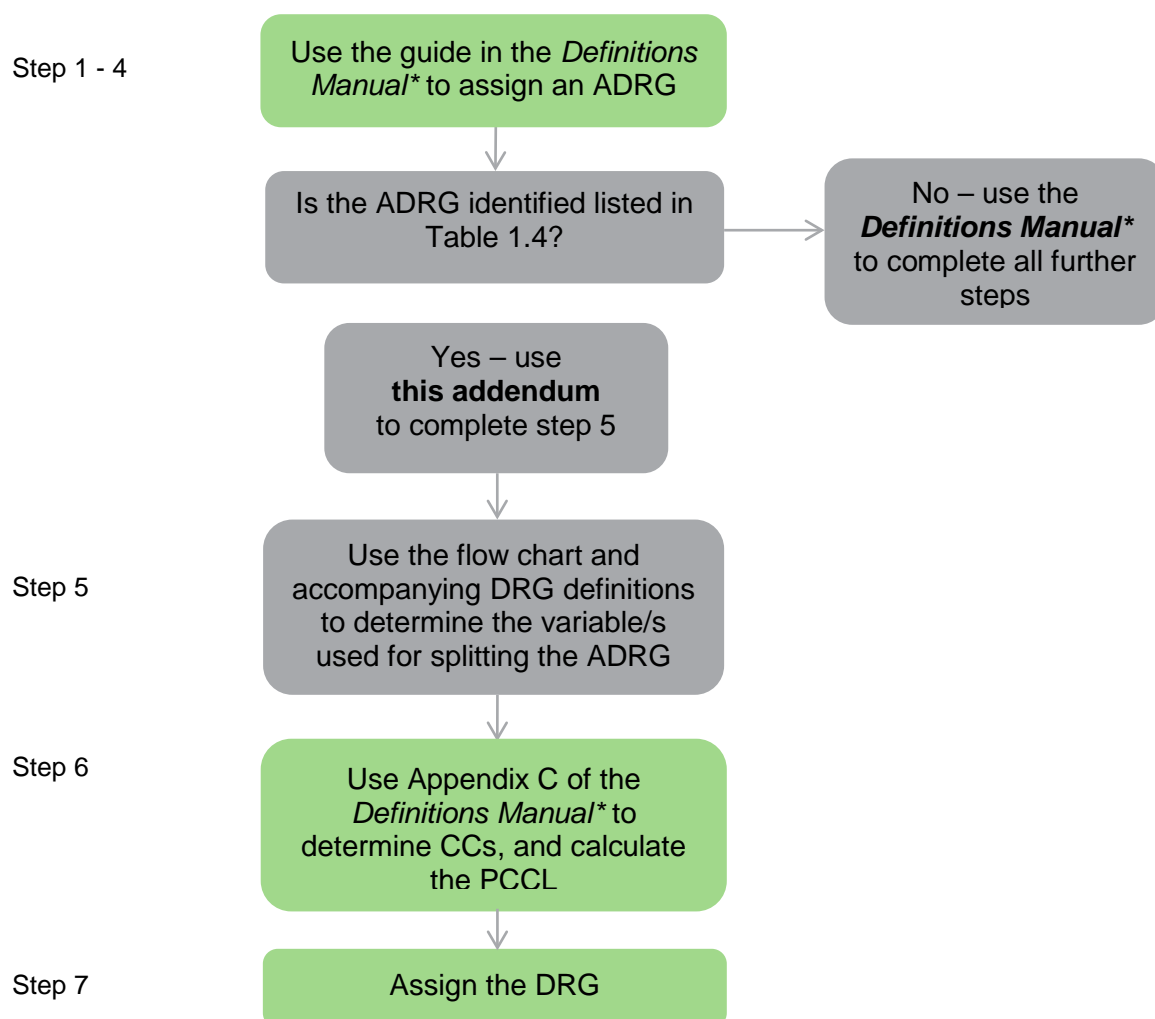
3.3 Guide for the use of this addendum

Assigning a DRG

This addendum must be read in conjunction with the *AR-DRG V6.0 Definitions Manual*. Together, these documents are intended to clarify the DRG assignment logic in the V6.x grouper software products.

Section five of the introduction in the *AR-DRG V6.0 Definitions Manual (Vol 1)*, provides guidance on how to use the manual to identify the likely DRG assignment for individual records. The flow chart in Figure 3.1 below provides a guide to how to use this addendum to assign DRGs when records are grouped to adjacent DRGs affected by the V6.x changes (Table 3.4).

FIGURE 3.1 Guide for the use of this addendum



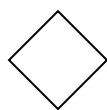
**Definitions Manual* relates to the AR-DRG V6.0 Definitions Manual. Users should refer to section five of the introduction for details of each step.

TABLE 3.4 ADRGs Affected by AR-DRG V6.x Changes

MDC	ADRG	ADRG Description
09	J06	<i>Major Procedures for Breast Conditions</i>
	J07	<i>Minor Procedures for Breast Conditions</i>
14	O01	<i>Caesarean Delivery</i>
	O60	<i>Vaginal Delivery</i>
	O64	<i>False Labour</i>
	O66	<i>Antenatal and Other Obstetric Admission</i>
19	U61	<i>Schizophrenia Disorders</i>
	U63	<i>Major Affective Disorders</i>
20	V60	<i>Alcohol Intoxication and Withdrawal</i>

3.4 Symbols and conventions

Symbols in Major Diagnostic Category (MDC) charts



A diamond indicates that a decision is being made on a single variable as opposed to a search of several variables. This symbol is used when the decision variable in the DRG structure is principal diagnosis (PDX), sex, length of stay (LOS), admission weight (AdmWt), sameday status, MHLS, urgency of admission or mode of separation. The decision is either 'yes' or 'no', and lines flowing out of the diamond indicate these paths.



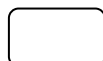
A circle indicates that a decision is being made on the basis of several variables. For example, a circle is used when all listed additional (secondary) diagnosis (ADX) are searched to determine if a CC is present and then a PCCL. A circle is also used when the decision in the DRG structure involves the presence of an OR procedure or the presence of a particular diagnosis. The decision is either 'yes' or 'no', and lines flowing out of the circle indicate these paths.



A downward pointer indicates that the logic flow chart structure is continued on another page.



A rectangle indicates a DRG. An asterisk (*) has been used to indicate instances where the DRG is mentioned more than once.



A rounded rectangle indicates a Major Diagnostic Category (MDC).



A rightward pointer refers to the next MDC.

Text boxes

Black reverse text boxes and box outlines denote ADRGs and DRGs respectively. For example:

ADRG O60

Refers to ADRG O60 Vaginal Delivery

DRG O60A

Refers to DRG O60A Vaginal Delivery W Catastrophic or Severe CC

Tables used for DRG definitions

DRGs are generally defined in terms of diagnosis and/or procedure codes. Each ADRG is followed by an outline of the logic used to allocate episodes within the ADRG grouping, and some of this logic refers to tables.

3.5 Feedback

The Independent Hospital Pricing Authority (IHPA) welcomes comments on this publication. Please send any comments to:

Executive Director, ABF
IHPA
PO Box 483
Darlinghurst NSW 1300

or email enquiries.ihta@ihta.gov.au

TABLE 3.5 List of Australian Refined Diagnosis Related Groups Version 6.x

DRG	Partition	Description
Pre-MDC		
A01Z	S	Liver Transplant
A03Z	S	Lung or Heart/Lung Transplant
A05Z	S	Heart Transplant
A06A	S	Tracheostomy W Ventilation >95 hours W Catastrophic CC
A06B	S	Trach W Vent >95 hours W/O Cat CC or Trach/Vent >95 hours W Cat CC
A06C	S	Ventilation >95 hours W/O Catastrophic CC
A06D	S	Tracheostomy W/O Catastrophic CC
A07Z	S	Allogeneic Bone Marrow Transplant
A08A	S	Autologous Bone Marrow Transplant W Catastrophic CC
A08B	S	Autologous Bone Marrow Transplant W/O Catastrophic CC
A09A	S	Renal Transplant W Pancreas Transplant or W Catastrophic CC
A09B	S	Renal Transplant W/O Pancreas Transplant W/O Catastrophic CC
A10Z	S	Insertion of Ventricular Assist Devices
A11A	S	Insertion of Implantable Spinal Infusion Device W Catastrophic CC
A11B	S	Insertion of Implantable Spinal Infusion Device W/O Catastrophic CC
A12Z	S	Insertion of Neurostimulator Device
A40Z	O	ECMO
MDC 01 Diseases and disorders of the nervous system		
B01A	S	Ventricular Shunt Revision W Catastrophic or Severe CC
B01B	S	Ventricular Shunt Revision W/O Catastrophic or Severe CC
B02A	S	Cranial Procedures W Catastrophic CC
B02B	S	Cranial Procedures W Severe CC
B02C	S	Cranial Procedures W/O Catastrophic or Severe CC
B03A	S	Spinal Procedures W Catastrophic or Severe CC
B03B	S	Spinal Procedures W/O Catastrophic or Severe CC
B04A	S	Extracranial Vascular Procedures W Catastrophic CC
B04B	S	Extracranial Vascular Procedures W/O Catastrophic CC
B05Z	S	Carpal Tunnel Release
B06A	S	Procs for Cerebral Palsy, Muscular Dystrophy, Neuropathy W CC
B06B	S	Procs for Cerebral Palsy, Muscular Dystrophy, Neuropathy W/O CC
B07A	S	Peripheral and Cranial Nerve and Other Nervous System Procedures W CC
B07B	S	Peripheral and Cranial Nerve and Other Nervous System Procedures W/O CC
B40Z	O	Plasmapheresis W Neurological Disease, Sameday
B41Z	O	Telemetric EEG Monitoring
B42A	O	Nervous System Diagnosis W Ventilator Support W Catastrophic CC
B42B	O	Nervous System Diagnosis W Ventilator Support W/O Catastrophic CC
B60A	M	Acute Paraplegia/Quadriplegia W or W/O OR Procs W Cat CC
B60B	M	Acute Paraplegia/Quadriplegia W or W/O OR Procs W/O Cat CC
B61A	M	Spinal Cord Conditions W or W/O OR Procedures W Catastrophic or Severe CC
B61B	M	Spinal Cord Conditions W or W/O OR Procedures W/O Catastrophic or Severe CC
B62Z	M	Apheresis
B63Z	M	Dementia and Other Chronic Disturbances of Cerebral Function
B64A	M	Delirium W Catastrophic CC
B64B	M	Delirium W/O Catastrophic CC
B65Z	M	Cerebral Palsy

Note: S=surgical; M=medical; O=other

DRG	Partition	Description
B66A	M	Nervous System Neoplasm W Catastrophic or Severe CC
B66B	M	Nervous System Neoplasm W/O Catastrophic or Severe CC
B67A	M	Degenerative Nervous System Disorders W Catastrophic or Severe CC
B67B	M	Degenerative Nervous System Disorders W Moderate CC
B67C	M	Degenerative Nervous System Disorders W/O CC
B68A	M	Multiple Sclerosis and Cerebellar Ataxia W CC
B68B	M	Multiple Sclerosis and Cerebellar Ataxia W/O CC
B69A	M	TIA and Precerebral Occlusion W Catastrophic or Severe CC
B69B	M	TIA and Precerebral Occlusion W/O Catastrophic or Severe CC
B70A	M	Stroke and Other Cerebrovascular Disorders W Catastrophic CC
B70B	M	Stroke and Other Cerebrovascular Disorders W Severe CC
B70C	M	Stroke and Other Cerebrovascular Disorders W/O Catastrophic or Severe CC
B70D	M	Stroke and Other Cerebrovascular Disorders, Died or Transferred <5 Days
B71A	M	Cranial and Peripheral Nerve Disorders W CC
B71B	M	Cranial and Peripheral Nerve Disorders W/O CC
B72A	M	Nervous System Infection Except Viral Meningitis W Cat or Sev CC
B72B	M	Nervous System Infection Except Viral Meningitis W/O Cat or Sev CC
B73Z	M	Viral Meningitis
B74A	M	Nontraumatic Stupor and Coma W CC
B74B	M	Nontraumatic Stupor and Coma W/O CC
B75Z	M	Febrile Convulsions
B76A	M	Seizure W Catastrophic or Severe CC
B76B	M	Seizure W/O Catastrophic or Severe CC
B77Z	M	Headache
B78A	M	Intracranial Injury W Catastrophic or Severe CC
B78B	M	Intracranial Injury W/O Catastrophic or Severe CC
B79A	M	Skull Fractures W Catastrophic or Severe CC
B79B	M	Skull Fractures W/O Catastrophic or Severe CC
B80Z	M	Other Head Injury
B81A	M	Other Disorders of the Nervous System W Catastrophic or Severe CC
B81B	M	Other Disorders of the Nervous System W/O Catastrophic or Severe CC
B82A	M	Chronic and Unspecified Paraplegia/Quadriplegia W or W/O OR Procs W Cat CC
B82B	M	Chronic and Unspecified Paraplegia/Quadriplegia W or W/O OR Procs W Severe CC
B82C	M	Chronic and Unspecified Paraplegia/Quadriplegia W or W/O OR Pr W/O Cat/Sev CC

MDC 02 Diseases and disorders of the eye

C01Z	S	Procedures for Penetrating Eye Injury
C02Z	S	Enucleations and Orbital Procedures
C03Z	S	Retinal Procedures
C04Z	S	Major Corneal, Scleral and Conjunctival Procedures
C05Z	S	Dacryocystorhinostomy
C10Z	S	Strabismus Procedures
C11Z	S	Eyelid Procedures
C12Z	S	Other Corneal, Scleral and Conjunctival Procedures
C13Z	S	Lacrimal Procedures
C14Z	S	Other Eye Procedures
C15A	S	Glaucoma and Complex Cataract Procedures
C15B	S	Glaucoma and Complex Cataract Procedures, Sameday
C16Z	S	Lens Procedures

Note: S=surgical; M=medical; O=other

DRG	Partition	Description
C60A	M	Acute and Major Eye Infections W CC
C60B	M	Acute and Major Eye Infections W/O CC
C61A	M	Neurological and Vascular Disorders of the Eye W CC
C61B	M	Neurological and Vascular Disorders of the Eye W/O CC
C62Z	M	Hyphema and Medically Managed Trauma to the Eye
C63Z	M	Other Disorders of the Eye
MDC 03 Diseases and disorders of the ear, nose, mouth and throat		
D01Z	S	Cochlear Implant
D02A	S	Head and Neck Procedures W Catastrophic or Severe CC
D02B	S	Head and Neck Procedures W Malignancy or Moderate CC
D02C	S	Head and Neck Procedures W/O Malignancy W/O CC
D03Z	S	Surgical Repair for Cleft Lip or Palate Diagnosis
D04A	S	Maxillo Surgery W CC
D04B	S	Maxillo Surgery W/O CC
D05Z	S	Parotid Gland Procedures
D06Z	S	Sinus and Complex Middle Ear Procedures
D10Z	S	Nasal Procedures
D11Z	S	Tonsillectomy and/or Adenoidectomy
D12Z	S	Other Ear, Nose, Mouth and Throat Procedures
D13Z	S	Myringotomy W Tube Insertion
D14Z	S	Mouth and Salivary Gland Procedures
D15Z	S	Mastoid Procedures
D40Z	O	Dental Extractions and Restorations
D60A	M	Ear, Nose, Mouth and Throat Malignancy W Catastrophic or Severe CC
D60B	M	Ear, Nose, Mouth and Throat Malignancy W/O Catastrophic or Severe CC
D61Z	M	Dysequilibrium
D62Z	M	Epistaxis
D63Z	M	Otitis Media and URI
D64Z	M	Laryngotracheitis and Epiglottitis
D65Z	M	Nasal Trauma and Deformity
D66A	M	Other Ear, Nose, Mouth and Throat Diagnoses W CC
D66B	M	Other Ear, Nose, Mouth and Throat Diagnoses W/O CC
D67A	M	Oral and Dental Disorders Except Extractions and Restorations
D67B	M	Oral and Dental Disorders Except Extractions and Restorations, Sameday
MDC 04 Diseases and disorders of the respiratory system		
E01A	S	Major Chest Procedures W Catastrophic CC
E01B	S	Major Chest Procedures W/O Catastrophic CC
E02A	S	Other Respiratory System OR Procedures W Catastrophic CC
E02B	S	Other Respiratory System OR Procedures W Severe or Moderate CC
E02C	S	Other Respiratory System OR Procedures W/O CC
E40A	O	Respiratory System Diagnosis W Ventilator Support W Catastrophic CC
E40B	O	Respiratory System Diagnosis W Ventilator Support W/O Catastrophic CC
E41Z	O	Respiratory System Diagnosis W Non-Invasive Ventilation
E42A	O	Bronchoscopy W Catastrophic CC
E42B	O	Bronchoscopy W/O Catastrophic CC
E42C	O	Bronchoscopy, Sameday
E60A	M	Cystic Fibrosis W Catastrophic or Severe CC
E60B	M	Cystic Fibrosis W/O Catastrophic or Severe CC

Note: S=surgical; M=medical; O=other

DRG	Partition	Description
E61A	M	Pulmonary Embolism W Catastrophic CC
E61B	M	Pulmonary Embolism W/O Catastrophic CC
E62A	M	Respiratory Infections/Inflammations W Catastrophic CC
E62B	M	Respiratory Infections/Inflammations W Severe or Moderate CC
E62C	M	Respiratory Infections/Inflammations W/O CC
E63Z	M	Sleep Apnoea
E64A	M	Pulmonary Oedema and Respiratory Failure W Catastrophic CC
E64B	M	Pulmonary Oedema and Respiratory Failure W/O Catastrophic CC
E65A	M	Chronic Obstructive Airways Disease W Catastrophic CC
E65B	M	Chronic Obstructive Airways Disease W/O Catastrophic CC
E66A	M	Major Chest Trauma W Catastrophic CC
E66B	M	Major Chest Trauma W Severe or Moderate CC
E66C	M	Major Chest Trauma W/O CC
E67A	M	Respiratory Signs and Symptoms W Catastrophic or Severe CC
E67B	M	Respiratory Signs and Symptoms W/O Catastrophic or Severe CC
E68A	M	Pneumothorax W CC
E68B	M	Pneumothorax W/O CC
E69A	M	Bronchitis and Asthma W CC
E69B	M	Bronchitis and Asthma W/O CC
E70A	M	Whooping Cough and Acute Bronchiolitis W CC
E70B	M	Whooping Cough and Acute Bronchiolitis W/O CC
E71A	M	Respiratory Neoplasms W Catastrophic CC
E71B	M	Respiratory Neoplasms W/O Catastrophic CC
E72Z	M	Respiratory Problems Arising from Neonatal Period
E73A	M	Pleural Effusion W Catastrophic CC
E73B	M	Pleural Effusion W Severe or Moderate CC
E73C	M	Pleural Effusion W/O CC
E74A	M	Interstitial Lung Disease W Catastrophic CC
E74B	M	Interstitial Lung Disease W Severe or Moderate CC
E74C	M	Interstitial Lung Disease W/O CC
E75A	M	Other Respiratory System Diagnosis W Catastrophic CC
E75B	M	Other Respiratory System Diagnosis W Severe or Moderate CC
E75C	M	Other Respiratory System Diagnosis W/O CC
E76Z	M	Respiratory Tuberculosis
MDC 05 Diseases and disorders of the circulatory system		
F01A	S	Implantation or Replacement of AICD, Total System W Catastrophic CC
F01B	S	Implantation or Replacement of AICD, Total System W/O Catastrophic CC
F02Z	S	Other AICD Procedures
F03A	S	Cardiac Valve Proc W CPB Pump W Invasive Cardiac Investigation W Cat CC
F03B	S	Cardiac Valve Proc W CPB Pump W Invasive Cardiac Investigation W/O Cat CC
F04A	S	Cardiac Valve Proc W CPB Pump W/O Invasive Cardiac Inves W Cat CC
F04B	S	Cardiac Valve Proc W CPB Pump W/O Invasive Cardiac Inves W/O Cat CC
F05A	S	Coronary Bypass W Invasive Cardiac Investigation W Reoperation or W Cat CC
F05B	S	Coronary Bypass W Invasive Cardiac Investigation W/O Reoperation W/O Cat CC
F06A	S	Coronary Bypass W/O Invasive Cardiac Inves W Reoperation or W Cat or Sev CC
F06B	S	Coronary Bypass W/O Invasive Cardiac Inves W/O Reoperation W/O Cat or Sev CC
F07A	S	Other Cardiothoracic/Vascular Procedures W CPB Pump W Catastrophic CC
F07B	S	Other Cardiothoracic/Vascular Procedures W CPB Pump W Severe or Moderate CC

Note: S=surgical; M=medical; O=other

DRG	Partition	Description
F07C	S	Other Cardiothoracic/Vascular Procedures W CPB Pump W/O CC
F08A	S	Major Reconstruct Vascular Procedures W/O CPB Pump W Catastrophic CC
F08B	S	Major Reconstruct Vascular Procedures W/O CPB Pump W/O Catastrophic CC
F09A	S	Other Cardiothoracic Procedures W/O CPB Pump W Catastrophic CC
F09B	S	Other Cardiothoracic Procedures W/O CPB Pump W Severe or Moderate CC
F09C	S	Other Cardiothoracic Procedures W/O CPB Pump W/O CC
F10A	S	Interventional Coronary Procedures W AMI W Catastrophic CC
F10B	S	Interventional Coronary Procedures W AMI W/O Catastrophic CC
F11A	S	Amputation for Circ System Except Upper Limb and Toe W Catastrophic CC
F11B	S	Amputation for Circ System Except Upper Limb and Toe W/O Catastrophic CC
F12A	S	Implantation or Replacement of Pacemaker, Total System W Catastrophic CC
F12B	S	Implantation or Replacement of Pacemaker, Total System W/O Catastrophic CC
F13A	S	Upper Limb and Toe Amputation for Circulatory Sys Disorders W Cat or Sev CC
F13B	S	Upper Limb and Toe Amputation for Circulatory Sys Disorders W/O Cat or Sev CC
F14A	S	Vascular Procs Except Major Reconstruction W/O CPB Pump W Cat CC
F14B	S	Vascular Procs Except Major Reconstruction W/O CPB Pump W Sev or Mod CC
F14C	S	Vascular Procs Except Major Reconstruction W/O CPB Pump W/O CC
F15A	S	Interventional Coronary Procs W/O AMI W Stent Implantation W Cat or Sev CC
F15B	S	Interventional Coronary Procs W/O AMI W Stent Implantation W/O Cat or Sev CC
F16A	S	Interventional Coronary Procedures W/O AMI W/O Stent Implantation W CC
F16B	S	Interventional Coronary Procedures W/O AMI W/O Stent Implantation W/O CC
F17A	S	Insertion or Replacement of Pacemaker Generator W Catastrophic or Severe CC
F17B	S	Insertion or Replacement of Pacemaker Generator W/O Catastrophic or Severe CC
F18A	S	Other Pacemaker Procedures W CC
F18B	S	Other Pacemaker Procedures W/O CC
F19Z	S	Trans-Vascular Percutaneous Cardiac Intervention
F20Z	S	Vein Ligation and Stripping
F21A	S	Other Circulatory System OR Procedures W Catastrophic CC
F21B	S	Other Circulatory System OR Procedures W/O Catastrophic CC
F40A	O	Circulatory System Diagnosis W Ventilator Support W Catastrophic CC
F40B	O	Circulatory System Diagnosis W Ventilator Support W/O Catastrophic CC
F41A	O	Circulatory Disorders W AMI W Invasive Cardiac Inves Proc W Cat or Sev CC
F41B	O	Circulatory Disorders W AMI W Invasive Cardiac Inves Proc W/O Cat or Sev CC
F42A	O	Circulatory Disorders W/O AMI W Invasive Cardiac Inves Proc W Cat or Sev CC
F42B	O	Circulatory Disorders W/O AMI W Invasive Cardiac Inves Proc W/O Cat or Sev CC
F42C	O	Circulatory Disorders W/O AMI W Invasive Cardiac Inves Proc, Sameday
F43Z	O	Circulatory System Diagnosis W Non-Invasive Ventilation
F60A	M	Circulatory Disorders W AMI W/O Invasive Cardiac Inves Proc W Catastrophic CC
F60B	M	Circulatory Disorders W AMI W/O Invasive Cardiac Inves Pr W/O Catastrophic CC
F61A	M	Infective Endocarditis W Catastrophic CC
F61B	M	Infective Endocarditis W/O Catastrophic CC
F62A	M	Heart Failure and Shock W Catastrophic CC
F62B	M	Heart Failure and Shock W/O Catastrophic CC
F63A	M	Venous Thrombosis W Catastrophic or Severe CC
F63B	M	Venous Thrombosis W/O Catastrophic or Severe CC
F64A	M	Skin Ulcers in Circulatory Disorders W Catastrophic or Severe CC
F64B	M	Skin Ulcers in Circulatory Disorders W/O Catastrophic or Severe CC
F65A	M	Peripheral Vascular Disorders W Catastrophic or Severe CC

Note: S=surgical; M=medical; O=other

DRG	Partition	Description
F65B	M	Peripheral Vascular Disorders W/O Catastrophic or Severe CC
F66A	M	Coronary Atherosclerosis W Catastrophic or Severe CC
F66B	M	Coronary Atherosclerosis W/O Catastrophic or Severe CC
F67A	M	Hypertension W Catastrophic or Severe CC
F67B	M	Hypertension W/O Catastrophic or Severe CC
F68A	M	Congenital Heart Disease W CC
F68B	M	Congenital Heart Disease W/O CC
F69A	M	Valvular Disorders W Catastrophic or Severe CC
F69B	M	Valvular Disorders W/O Catastrophic or Severe CC
F72A	M	Unstable Angina W Catastrophic or Severe CC
F72B	M	Unstable Angina W/O Catastrophic or Severe CC
F73A	M	Syncope and Collapse W Catastrophic or Severe CC
F73B	M	Syncope and Collapse W/O Catastrophic or Severe CC
F74Z	M	Chest Pain
F75A	M	Other Circulatory System Diagnoses W Catastrophic CC
F75B	M	Other Circulatory System Diagnoses W Severe or Moderate CC
F75C	M	Other Circulatory System Diagnoses W/O CC
F76A	M	Arrhythmia, Cardiac Arrest and Conduction Disorders W Cat or Sev CC
F76B	M	Arrhythmia, Cardiac Arrest and Conduction Disorders W/O Cat or Sev CC
MDC 06 Diseases and disorders of the digestive system		
G01A	S	Rectal Resection W Catastrophic CC
G01B	S	Rectal Resection W/O Catastrophic CC
G02A	S	Major Small and Large Bowel Procedures W Catastrophic CC
G02B	S	Major Small and Large Bowel Procedures W/O Catastrophic CC
G03A	S	Stomach, Oesophageal and Duodenal Procedure W Malignancy or W Catastrophic CC
G03B	S	Stomach, Oesophageal and Duodenal Procedures W/O Malignancy W Sev or Mod CC
G03C	S	Stomach, Oesophageal and Duodenal Procedures W/O Malignancy W/O CC
G04A	S	Peritoneal Adhesiolysis W Catastrophic CC
G04B	S	Peritoneal Adhesiolysis W Severe or Moderate CC
G04C	S	Peritoneal Adhesiolysis W/O CC
G05A	S	Minor Small and Large Bowel Procedures W Catastrophic CC
G05B	S	Minor Small and Large Bowel Procedures W Severe or Moderate CC
G05C	S	Minor Small and Large Bowel Procedures W/O CC
G06Z	S	Pyloromyotomy Procedure
G07A	S	Appendicectomy W Malignancy or Peritonitis or W Catastrophic or Severe CC
G07B	S	Appendicectomy W/O Malignancy or Peritonitis W/O Cat or Sev CC
G10A	S	Hernia Procedures W CC
G10B	S	Hernia Procedures W/O CC
G11Z	S	Anal and Stomal Procedures
G12A	S	Other Digestive System OR Procedures W Catastrophic CC
G12B	S	Other Digestive System OR Procedures W Severe or Moderate CC
G12C	S	Other Digestive System OR Procedures W/O CC
G46A	O	Complex Gastroscopy W Catastrophic CC
G46B	O	Complex Gastroscopy W/O Catastrophic CC
G46C	O	Complex Gastroscopy, Sameday
G47A	O	Other Gastroscopy W Catastrophic CC
G47B	O	Other Gastroscopy W/O Catastrophic CC
G47C	O	Other Gastroscopy, Sameday

Note: S=surgical; M=medical; O=other

DRG	Partition	Description
G48A	O	Colonoscopy W Catastrophic or Severe CC
G48B	O	Colonoscopy W/O Catastrophic or Severe CC
G48C	O	Colonoscopy, Sameday
G60A	M	Digestive Malignancy W Catastrophic CC
G60B	M	Digestive Malignancy W/O Catastrophic CC
G61A	M	GI Haemorrhage W Catastrophic or Severe CC
G61B	M	GI Haemorrhage W/O Catastrophic or Severe CC
G62Z	M	Complicated Peptic Ulcer
G63Z	M	Uncomplicated Peptic Ulcer
G64A	M	Inflammatory Bowel Disease W CC
G64B	M	Inflammatory Bowel Disease W/O CC
G65A	M	GI Obstruction W Catastrophic or Severe CC
G65B	M	GI Obstruction W/O Catastrophic or Severe CC
G66Z	M	Abdominal Pain or Mesenteric Adenitis
G67A	M	Oesophagitis and Gastroenteritis W Cat/Sev CC
G67B	M	Oesophagitis and Gastroenteritis W/O Cat/Sev CC
G70A	M	Other Digestive System Diagnoses W Catastrophic or Severe CC
G70B	M	Other Digestive System Diagnoses W/O Catastrophic or Severe CC
MDC 07 Diseases and disorders of the hepatobiliary system and pancreas		
H01A	S	Pancreas, Liver and Shunt Procedures W Catastrophic CC
H01B	S	Pancreas, Liver and Shunt Procedures W/O Catastrophic CC
H02A	S	Major Biliary Tract Procedures W Catastrophic CC
H02B	S	Major Biliary Tract Procedures W Severe CC
H02C	S	Major Biliary Tract Procedures W/O Catastrophic or Severe CC
H05A	S	Hepatobiliary Diagnostic Procedures W Catastrophic CC
H05B	S	Hepatobiliary Diagnostic Procedures W/O Catastrophic CC
H06A	S	Other Hepatobiliary and Pancreas OR Procedures W Catastrophic CC
H06B	S	Other Hepatobiliary and Pancreas OR Procedures W/O Catastrophic CC
H07A	S	Open Cholecystectomy W Closed CDE or W Catastrophic CC
H07B	S	Open Cholecystectomy W/O Closed CDE W/O Catastrophic CC
H08A	S	Laparoscopic Cholecystectomy W Closed CDE or W (Cat or Sev CC)
H08B	S	Laparoscopic Cholecystectomy W/O Closed CDE W/O Cat or Sev CC
H40A	O	Endoscopic Procedures for Bleeding Oesophageal Varices W Catastrophic CC
H40B	O	Endoscopic Procedures for Bleeding Oesophageal Varices W/O Catastrophic CC
H43A	O	ERCP Procedures W Catastrophic or Severe CC
H43B	O	ERCP Procedures W/O Catastrophic or Severe CC
H60A	M	Cirrhosis and Alcoholic Hepatitis W Catastrophic CC
H60B	M	Cirrhosis and Alcoholic Hepatitis W Severe or Moderate CC
H60C	M	Cirrhosis and Alcoholic Hepatitis W/O CC
H61A	M	Malignancy of Hepatobiliary System, Pancreas W Catastrophic CC
H61B	M	Malignancy of Hepatobiliary System, Pancreas W/O Catastrophic CC
H62A	M	Disorders of Pancreas Except for Malignancy W Catastrophic or Severe CC
H62B	M	Disorders of Pancreas Except for Malignancy W/O Catastrophic or Severe CC
H63A	M	Disorders of Liver Except Malig, Cirrhosis, Alcoholic Hepatitis W Cat/Sev CC
H63B	M	Disorders of Liver Excep Malig, Cirrhosis, Alcoholic Hepatitis W/O Cat/Sev CC
H64A	M	Disorders of the Biliary Tract W CC
H64B	M	Disorders of the Biliary Tract W/O CC

Note: S=surgical; M=medical; O=other

DRG	Partition	Description
MDC 08 Diseases and disorders of the musculoskeletal system and connective tissue		
I01A	S	Bilateral/Multiple Major Joint Proc of Lower Extremity W Revision or W Cat CC
I01B	S	Bilateral/Multiple Major Joint Pr of Lower Extremity W/O Revision W/O Cat CC
I02A	S	Microvascular Tissue Transfer or (Skin Graft W Cat or Sev CC), Excluding Hand
I02B	S	Skin Graft W/O Catastrophic or Severe CC, Excluding Hand
I03A	S	Hip Replacement W Catastrophic CC
I03B	S	Hip Replacement W/O Catastrophic CC
I04A	S	Knee Replacement W Catastrophic or Severe CC
I04B	S	Knee Replacement W/O Catastrophic or Severe CC
I05A	S	Other Joint Replacement W Catastrophic or Severe CC
I05B	S	Other Joint Replacement W/O Catastrophic or Severe CC
I06Z	S	Spinal Fusion W Deformity
I07Z	S	Amputation
I08A	S	Other Hip and Femur Procedures W Catastrophic CC
I08B	S	Other Hip and Femur Procedures W/O Catastrophic CC
I09A	S	Spinal Fusion W Catastrophic CC
I09B	S	Spinal Fusion W/O Catastrophic CC
I10A	S	Other Back and Neck Procedures W Catastrophic or Severe CC
I10B	S	Other Back and Neck Procedures W/O Catastrophic or Severe CC
I11Z	S	Limb Lengthening Procedures
I12A	S	Infect/Inflam of Bone and Joint W Misc Musculoskeletal Procs W Cat CC
I12B	S	Infect/Inflam of Bone and Joint W Misc Musculoskeletal Procs W Sev or Mod CC
I12C	S	Infect/Inflam of Bone and Joint W Misc Musculoskeletal Procs W/O CC
I13A	S	Humerus, Tibia, Fibula and Ankle Procedures W CC
I13B	S	Humerus, Tibia, Fibula and Ankle Procedures W/O CC
I15Z	S	Cranio-Facial Surgery
I16Z	S	Other Shoulder Procedures
I17A	S	Maxillo-Facial Surgery W CC
I17B	S	Maxillo-Facial Surgery W/O CC
I18Z	S	Other Knee Procedures
I19A	S	Other Elbow or Forearm Procedures W CC
I19B	S	Other Elbow or Forearm Procedures W/O CC
I20Z	S	Other Foot Procedures
I21Z	S	Local Excision and Removal of Internal Fixation Devices of Hip and Femur
I23Z	S	Local Excision and Removal of Internal Fixation Devices Excl Hip and Femur
I24Z	S	Arthroscopy
I25A	S	Bone and Joint Diagnostic Procedures Including Biopsy W CC
I25B	S	Bone and Joint Diagnostic Procedures Including Biopsy W/O CC
I27A	S	Soft Tissue Procedures W CC
I27B	S	Soft Tissue Procedures W/O CC
I28A	S	Other Musculoskeletal Procedures W CC
I28B	S	Other Musculoskeletal Procedures W/O CC
I29Z	S	Knee Reconstruction or Revision
I30Z	S	Hand Procedures
I31A	S	Hip Revision W Catastrophic CC
I31B	S	Hip Revision W/O Catastrophic CC
I32A	S	Knee Revision W Catastrophic CC
I32B	S	Knee Revision W Severe CC
I32C	S	Knee Revision W/O Catastrophic or Severe CC

Note: S=surgical; M=medical; O=other

DRG	Partition	Description
I60Z	M	Femoral Shaft Fractures
I61A	M	Distal Femoral Fractures W CC
I61B	M	Distal Femoral Fractures W/O CC
I63A	M	Sprains, Strains and Dislocations of Hip, Pelvis and Thigh W CC
I63B	M	Sprains, Strains and Dislocations of Hip, Pelvis and Thigh W/O CC
I64A	M	Osteomyelitis W Catastrophic or Severe CC
I64B	M	Osteomyelitis W/O Catastrophic or Severe CC
I65A	M	Musculoskeletal Malignant Neoplasms W Catastrophic CC
I65B	M	Musculoskeletal Malignant Neoplasms W/O Catastrophic CC
I66A	M	Inflammatory Musculoskeletal Disorders W Cat or Sev CC
I66B	M	Inflammatory Musculoskeletal Disorders W/O Cat or Sev CC
I67A	M	Septic Arthritis W Catastrophic or Severe CC
I67B	M	Septic Arthritis W/O Catastrophic or Severe CC
I68A	M	Non-surgical Spinal Disorders W CC
I68B	M	Non-surgical Spinal Disorders W/O CC
I68C	M	Non-surgical Spinal Disorders, Sameday
I69A	M	Bone Diseases and Arthropathies W Catastrophic or Severe CC
I69B	M	Bone Diseases and Arthropathies W/O Catastrophic or Severe CC
I71A	M	Other Musculotendinous Disorders W Catastrophic or Severe CC
I71B	M	Other Musculotendinous Disorders W/O Catastrophic or Severe CC
I72A	M	Specific Musculotendinous Disorders W Catastrophic or Severe CC
I72B	M	Specific Musculotendinous Disorders W/O Catastrophic or Severe CC
I73A	M	Aftercare of Musculoskeletal Implants/Prostheses W Catastrophic or Severe CC
I73B	M	Aftercare of Musculoskeletal Implants/Prostheses W/O Cat or Sev CC
I74Z	M	Injury to Forearm, Wrist, Hand or Foot
I75A	M	Injury to Shoulder, Arm, Elbow, Knee, Leg or Ankle W CC
I75B	M	Injury to Shoulder, Arm, Elbow, Knee, Leg or Ankle W/O CC
I76A	M	Other Musculoskeletal Disorders W Catastrophic or Severe CC
I76B	M	Other Musculoskeletal Disorders W/O Catastrophic or Severe CC
I77A	M	Fractures of Pelvis W Catastrophic or Severe CC
I77B	M	Fractures of Pelvis W/O Catastrophic or Severe CC
I78A	M	Fractures of Neck of Femur W Catastrophic or Severe CC
I78B	M	Fractures of Neck of Femur W/O Catastrophic or Severe CC
I79A	M	Pathological Fracture W Catastrophic CC
I79B	M	Pathological Fracture W/O Catastrophic CC
MDC 09 Diseases and disorders of the skin, subcutaneous tissue and breast		
J01A	S	Microvas Tiss Transf for Skin, Subcutaneous Tiss & Breast Disd W Cat/Sev CC
J01B	S	Microvas Tiss Transf for Skin, Subcutaneous Tiss & Breast Disd W/O Cat/Sev CC
J06A	S	Major Procedures for Malignant Breast Conditions
J06B	S	Major Procedures for Non-Malignant Breast Conditions
J07A	S	Minor Procedures for Malignant Breast Conditions
J07B	S	Minor Procedures for Non-Malignant Breast Conditions
J08A	S	Other Skin Graft and/or Debridement Procedures W CC
J08B	S	Other Skin Graft and/or Debridement Procedures W/O CC
J09Z	S	Perianal and Pilonidal Procedures
J10Z	S	Skin, Subcutaneous Tissue and Breast Plastic OR Procedures
J11Z	S	Other Skin, Subcutaneous Tissue and Breast Procedures
J12A	S	Lower Limb Procs W Ulcer/Cellulitis W Catastrophic CC

Note: S=surgical; M=medical; O=other

DRG	Partition	Description
J12B	S	Lower Limb Procs W Ulcer/Cellulitis W/O Cat CC W Skin Graft/Flap Repair
J12C	S	Lower Limb Procs W Ulcer/Cellulitis W/O Cat CC W/O Skin Graft/Flap Repair
J13A	S	Lower Limb Procs W/O Ulcer/Cellulitis W Cat CC or W (Skin Graft and Sev CC)
J13B	S	Lower Limb Procs W/O Ulcer/Cellulitis W/O Cat CC W/O (Skin Graft and Sev CC)
J14Z	S	Major Breast Reconstructions
J60A	M	Skin Ulcers W Catastrophic CC
J60B	M	Skin Ulcers W/O Catastrophic CC
J60C	M	Skin Ulcers, Sameday
J62A	M	Malignant Breast Disorders W CC
J62B	M	Malignant Breast Disorders W/O CC
J63A	M	Non-Malignant Breast Disorders W CC
J63B	M	Non-Malignant Breast Disorders W/O CC
J64A	M	Cellulitis W Catastrophic or Severe CC
J64B	M	Cellulitis W/O Catastrophic or Severe CC
J65A	M	Trauma to the Skin, Subcutaneous Tissue and Breast W Cat or Sev CC
J65B	M	Trauma to the Skin, Subcutaneous Tissue and Breast W/O Cat or Sev CC
J67A	M	Minor Skin Disorders
J67B	M	Minor Skin Disorders, Sameday
J68A	M	Major Skin Disorders W Catastrophic or Severe CC
J68B	M	Major Skin Disorders W/O Catastrophic or Severe CC
J68C	M	Major Skin Disorders, Sameday
J69A	M	Skin Malignancy W Catastrophic CC
J69B	M	Skin Malignancy W/O Catastrophic CC
J69C	M	Skin Malignancy, Sameday
MDC 10 Endocrine, nutritional and metabolic diseases and disorders		
K01A	S	OR Procedures for Diabetic Complications W Catastrophic CC
K01B	S	OR Procedures for Diabetic Complications W/O Catastrophic CC
K02A	S	Pituitary Procedures W CC
K02B	S	Pituitary Procedures W/O CC
K03Z	S	Adrenal Procedures
K04A	S	Major Procedures for Obesity W CC
K04B	S	Major Procedures for Obesity W/O CC
K05A	S	Parathyroid Procedures W Catastrophic or Severe CC
K05B	S	Parathyroid Procedures W/O Catastrophic or Severe CC
K06A	S	Thyroid Procedures W Catastrophic or Severe CC
K06B	S	Thyroid Procedures W/O Catastrophic or Severe CC
K07Z	S	Obesity Procedures
K08Z	S	Thyroglossal Procedures
K09A	S	Other Endocrine, Nutritional and Metabolic OR Procedures W Catastrophic CC
K09B	S	Other Endocrine, Nutritional and Metabolic OR Procs W Severe or Moderate CC
K09C	S	Other Endocrine, Nutritional and Metabolic OR Procedures W/O CC
K40A	O	Endoscopic or Investigative Proc for Metabolic Disorders W Catastrophic CC
K40B	O	Endoscopic or Investigative Proc for Metabolic Disorders W/O Catastrophic CC
K40C	O	Endoscopic or Investigative Procedure for Metabolic Disorders, Sameday
K60A	M	Diabetes W Catastrophic or Severe CC
K60B	M	Diabetes W/O Catastrophic or Severe CC
K61Z	M	Severe Nutritional Disturbance
K62A	M	Miscellaneous Metabolic Disorders W Catastrophic or Severe CC

Note: S=surgical; M=medical; O=other

DRG	Partition	Description
K62B	M	Miscellaneous Metabolic Disorders W/O Catastrophic or Severe CC
K63A	M	Inborn Errors of Metabolism W CC
K63B	M	Inborn Errors of Metabolism W/O CC
K64A	M	Endocrine Disorders W Catastrophic or Severe CC
K64B	M	Endocrine Disorders W/O Catastrophic or Severe CC
MDC 11 Diseases and disorders of the kidney and urinary tract		
L02A	S	Operative Insertion of Peritoneal Catheter for Dialysis W Cat or Sev CC
L02B	S	Operative Insertion of Peritoneal Catheter for Dialysis W/O Cat or Sev CC
L03A	S	Kidney, Ureter and Major Bladder Procedures for Neoplasm W Catastrophic CC
L03B	S	Kidney, Ureter and Major Bladder Procedures for Neoplasm W Severe CC
L03C	S	Kidney, Ureter and Major Bladder Procedures for Neoplasm W/O Cat or Sev CC
L04A	S	Kidney, Ureter & Major Bladder Procedures for Non-Neoplasm W Catastrophic CC
L04B	S	Kidney, Ureter and Major Bladder Procedures for Non-Neoplasm W Severe CC
L04C	S	Kidney, Ureter & Major Bladder Procedures for Non-Neoplasm W/O Cat or Sev CC
L05A	S	Transurethral Prostatectomy W Catastrophic or Severe CC
L05B	S	Transurethral Prostatectomy W/O Catastrophic or Severe CC
L06A	S	Minor Bladder Procedures W Catastrophic or Severe CC
L06B	S	Minor Bladder Procedures W/O Catastrophic or Severe CC
L07A	S	Transurethral Procedures Except Prostatectomy W CC
L07B	S	Transurethral Procedures Except Prostatectomy W/O CC
L08A	S	Urethral Procedures W CC
L08B	S	Urethral Procedures W/O CC
L09A	S	Other Procedures for Kidney and Urinary Tract Disorders W Cat CC
L09B	S	Other Procedures for Kidney and Urinary Tract Disorders W Sev CC
L09C	S	Other Procedures for Kidney and Urinary Tract Disorders W/O Cat or Sev CC
L40Z	O	Ureteroscopy
L41Z	O	Cystourethroscopy, Sameday
L42Z	O	ESW Lithotripsy for Urinary Stones
L60A	M	Renal Failure W Catastrophic CC
L60B	M	Renal Failure W Severe CC
L60C	M	Renal Failure W/O Catastrophic or Severe CC
L61Z	M	Haemodialysis
L62A	M	Kidney and Urinary Tract Neoplasms W Catastrophic or Severe CC
L62B	M	Kidney and Urinary Tract Neoplasms W/O Catastrophic or Severe CC
L63A	M	Kidney and Urinary Tract Infections W Catastrophic or Severe CC
L63B	M	Kidney and Urinary Tract Infections W/O Catastrophic or Severe CC
L64Z	M	Urinary Stones and Obstruction
L65A	M	Kidney and Urinary Tract Signs and Symptoms W Catastrophic or Severe CC
L65B	M	Kidney and Urinary Tract Signs and Symptoms W/O Catastrophic or Severe CC
L66Z	M	Urethral Stricture
L67A	M	Other Kidney and Urinary Tract Diagnoses W Catastrophic or Severe CC
L67B	M	Other Kidney and Urinary Tract Diagnoses W/O Catastrophic or Severe CC
L68Z	M	Peritoneal Dialysis
MDC 12 Diseases and disorders of the male reproductive system		
M01A	S	Major Male Pelvic Procedures W Catastrophic or Severe CC
M01B	S	Major Male Pelvic Procedures W/O Catastrophic or Severe CC
M02A	S	Transurethral Prostatectomy W Catastrophic or Severe CC
M02B	S	Transurethral Prostatectomy W/O Catastrophic or Severe CC

Note: S=surgical; M=medical; O=other

DRG	Partition	Description
M03Z	S	Penis Procedures
M04Z	S	Testes Procedures
M05Z	S	Circumcision
M06A	S	Other Male Reproductive System OR Procedures W CC
M06B	S	Other Male Reproductive System OR Procedures W/O CC
M40Z	O	Cystourethroscopy, Sameday
M60A	M	Malignancy, Male Reproductive System W Catastrophic or Severe CC
M60B	M	Malignancy, Male Reproductive System W/O Catastrophic or Severe CC
M61Z	M	Benign Prostatic Hypertrophy
M62Z	M	Inflammation of the Male Reproductive System
M63Z	M	Sterilisation, Male
M64Z	M	Other Male Reproductive System Diagnoses
MDC 13 Diseases and disorders of the female reproductive system		
N01Z	S	Pelvic Evisceration and Radical Vulvectomy
N04A	S	Hysterectomy for Non-Malignancy W Catastrophic or Severe CC
N04B	S	Hysterectomy for Non-Malignancy W/O Catastrophic or Severe CC
N05A	S	Oophorectomies and Complex Fallopian Tube Procs for Non-Malig W Cat or Sev CC
N05B	S	Oophorectomies & Complex Fallopian Tube Procs for Non-Malig W/O Cat or Sev CC
N06A	S	Female Reproductive System Reconstructive Procs W Catastrophic or Severe CC
N06B	S	Female Reproductive System Reconstructive Procs W/O Catastrophic or Severe CC
N07Z	S	Other Uterine and Adnexa Procedures for Non-Malignancy
N08Z	S	Endoscopic and Laparoscopic Procedures for Female Reproductive System
N09Z	S	Conisation, Vagina, Cervix and Vulva Procedures
N10Z	S	Diagnostic Curettage or Diagnostic Hysteroscopy
N11Z	S	Other Female Reproductive System OR Procedures
N12A	S	Uterine and Adnexa Procedures for Malignancy W Catastrophic CC
N12B	S	Uterine and Adnexa Procedures for Malignancy W/O Catastrophic CC
N60A	M	Malignancy, Female Reproductive System W Catastrophic CC
N60B	M	Malignancy, Female Reproductive System W/O Catastrophic CC
N61Z	M	Infections, Female Reproductive System
N62Z	M	Menstrual and Other Female Reproductive System Disorders
MDC 14 Pregnancy, childbirth and the puerperium		
O01A	S	Caesarean Delivery W Catastrophic CC
O01B	S	Caesarean Delivery W Severe CC
O01C	S	Caesarean Delivery W/O Catastrophic or Severe CC
O02A	S	Vaginal Delivery W OR Procedure W Catastrophic or Severe CC
O02B	S	Vaginal Delivery W OR Procedure W/O Catastrophic or Severe CC
O03A	S	Ectopic Pregnancy W CC
O03B	S	Ectopic Pregnancy W/O CC
O04A	S	Postpartum and Post Abortion W OR Procedure W Catastrophic or Severe CC
O04B	S	Postpartum and Post Abortion W OR Procedure W/O Catastrophic or Severe CC
O05Z	S	Abortion W OR Procedure
O60A	M	Vaginal Delivery W Catastrophic or Severe CC
O60B	M	Vaginal Delivery W/O Catastrophic or Severe CC
O60C	M	Vaginal Delivery Single Uncomplicated W/O Other Condition
O61Z	M	Postpartum and Post Abortion W/O OR Procedure
O63Z	M	Abortion W/O OR Procedure
O64A	M	False Labour Before 37 Weeks or W Catastrophic CC

Note: S=surgical; M=medical; O=other

DRG	Partition	Description
O64B	M	False Labour After 37 Weeks W/O Catastrophic CC
O66A	M	Antenatal and Other Obstetric Admission
O66B	M	Antenatal and Other Obstetric Admission, Sameday
MDC 15 Newborns and other neonates		
P01Z	S	Neonate, Died or Transferred <5 Days of Admission W Significant OR Procedure
P02Z	S	Cardiothoracic/Vascular Procedures for Neonates
P03Z	S	Neonate, AdmWt 1000-1499 g W Significant OR Procedure
P04Z	S	Neonate, AdmWt 1500-1999 g W Significant OR Procedure
P05Z	S	Neonate, AdmWt 2000-2499 g W Significant OR Procedure
P06A	S	Neonate, AdmWt >2499 g W Significant OR Procedure W Multi Major Problems
P06B	S	Neonate, AdmWt >2499 g W Significant OR Procedure W/O Multi Major Problems
P60A	M	Neonate, Died or Transferred <5 Days of Adm, W/O Significant OR Proc, Newborn
P60B	M	Neonate, Died or Transf <5 Days of Adm, W/O Significant OR Proc, Not Newborn
P61Z	M	Neonate, AdmWt <750 g
P62Z	M	Neonate, AdmWt 750-999 g
P63Z	M	Neonate, AdmWt 1000-1249 g W/O Significant OR Procedure
P64Z	M	Neonate, AdmWt 1250-1499 g W/O Significant OR Procedure
P65A	M	Neonate, AdmWt 1500-1999 g W/O Significant OR Proc W Multi Major Problems
P65B	M	Neonate, AdmWt 1500-1999 g W/O Significant OR Procedure W Major Problem
P65C	M	Neonate, AdmWt 1500-1999 g W/O Significant OR Procedure W Other Problem
P65D	M	Neonate, AdmWt 1500-1999 g W/O Significant OR Procedure W/O Problem
P66A	M	Neonate, AdmWt 2000-2499 g W/O Significant OR Proc W Multi Major Problems
P66B	M	Neonate, AdmWt 2000-2499 g W/O Significant OR Procedure W Major Problem
P66C	M	Neonate, AdmWt 2000-2499 g W/O Significant OR Procedure W Other Problem
P66D	M	Neonate, AdmWt 2000-2499 g W/O Significant OR Procedure W/O Problem
P67A	M	Neonate, AdmWt >2499 g W/O Significant OR Procedure W Multi Major Problems
P67B	M	Neonate, AdmWt >2499 g W/O Significant OR Procedure W Major Problem
P67C	M	Neonate, AdmWt >2499 g W/O Significant OR Procedure W Other Problem
P67D	M	Neonate, AdmWt >2499 g W/O Significant OR Procedure W/O Problem
MDC 16 Diseases and disorders of the blood and blood forming organs and immunological disorders		
Q01Z	S	Splenectomy
Q02A	S	Other OR Procedure of Blood and Blood Forming Organs W Cat or Sev CC
Q02B	S	Other OR Procedure of Blood and Blood Forming Organs W/O Cat or Sev CC
Q60A	M	Reticuloendothelial and Immunity Disorders W Catastrophic or Severe CC
Q60B	M	Reticuloendothelial and Immunity Disorders W/O Cat or Sev CC W Malignancy
Q60C	M	Reticuloendothelial and Immunity Disorders W/O Cat or Sev CC W/O Malignancy
Q61A	M	Red Blood Cell Disorders W Catastrophic or Severe CC
Q61B	M	Red Blood Cell Disorders W/O Catastrophic or Severe CC
Q62Z	M	Coagulation Disorders
MDC 17 Neoplastic disorders (haematological and solid neoplasms)		
R01A	S	Lymphoma and Leukaemia W Major OR Procedures W Catastrophic or Severe CC
R01B	S	Lymphoma and Leukaemia W Major OR Procedures W/O Catastrophic or Severe CC
R02A	S	Other Neoplastic Disorders W Major OR Procedures W Catastrophic CC
R02B	S	Other Neoplastic Disorders W Major OR Procedures W Severe or Moderate CC
R02C	S	Other Neoplastic Disorders W Major OR Procedures W/O CC
R03A	S	Lymphoma and Leukaemia W Other OR Procedures W Catastrophic or Severe CC
R03B	S	Lymphoma and Leukaemia W Other OR Procedures W/O Catastrophic or Severe CC

Note: S=surgical; M=medical; O=other

DRG	Partition	Description
R04A	S	Other Neoplastic Disorders W Other OR Procedures W CC
R04B	S	Other Neoplastic Disorders W Other OR Procedures W/O CC
R60A	M	Acute Leukaemia W Catastrophic CC
R60B	M	Acute Leukaemia W/O Catastrophic CC
R61A	M	Lymphoma and Non-Acute Leukaemia W Catastrophic CC
R61B	M	Lymphoma and Non-Acute Leukaemia W/O Catastrophic CC
R61C	M	Lymphoma and Non-Acute Leukaemia, Sameday
R62A	M	Other Neoplastic Disorders W CC
R62B	M	Other Neoplastic Disorders W/O CC
R63Z	M	Chemotherapy
R64Z	M	Radiotherapy
MDC 18 Infectious and parasitic diseases		
S60Z	M	HIV, Sameday
S65A	M	HIV-Related Diseases W Catastrophic CC
S65B	M	HIV-Related Diseases W Severe CC
S65C	M	HIV-Related Diseases W/O Catastrophic or Severe CC
T01A	S	OR Procedures for Infectious and Parasitic Diseases W Catastrophic CC
T01B	S	OR Procedures for Infectious and Parasitic Diseases W Severe or Moderate CC
T01C	S	OR Procedures for Infectious and Parasitic Diseases W/O CC
T40Z	O	Infectious and Parasitic Diseases W Ventilator Support
T60A	M	Septicaemia W Catastrophic CC
T60B	M	Septicaemia W/O Catastrophic CC
T61A	M	Postoperative and Post-Traumatic Infections W Catastrophic or Severe CC
T61B	M	Postoperative and Post-Traumatic Infections W/O Catastrophic or Severe CC
T62A	M	Fever of Unknown Origin W CC
T62B	M	Fever of Unknown Origin W/O CC
T63Z	M	Viral Illness
T64A	M	Other Infectious and Parasitic Diseases W Catastrophic CC
T64B	M	Other Infectious and Parasitic Diseases W Severe or Moderate CC
T64C	M	Other Infectious and Parasitic Diseases W/O CC
MDC 19 Mental diseases and disorders		
U40Z	O	Mental Health Treatment, Sameday, W ECT
U60Z	M	Mental Health Treatment, Sameday, W/O ECT
U61A	M	Schizophrenia Disorders W Mental Health Legal Status
U61B	M	Schizophrenia Disorders W/O Mental Health Legal Status
U62A	M	Paranoia & Acute Psych Disorder W Cat/Sev CC or W Mental Health Legal Status
U62B	M	Paranoia & Acute Psych Disorder W/O Cat/Sev CC W/O Mental Health Legal Status
U63A	M	Major Affective Disorders Age >69 or W (Catastrophic or Severe CC)
U63B	M	Major Affective Disorders Age <70 W/O Catastrophic or Severe CC
U64Z	M	Other Affective and Somatoform Disorders
U65Z	M	Anxiety Disorders
U66Z	M	Eating and Obsessive-Compulsive Disorders
U67Z	M	Personality Disorders and Acute Reactions
U68Z	M	Childhood Mental Disorders
MDC 20 Alcohol/drug use and alcohol/drug induced organic mental disorders		
V60A	M	Alcohol Intoxication and Withdrawal W CC
V60B	M	Alcohol Intoxication and Withdrawal W/O CC

Note: S=surgical; M=medical; O=other

DRG	Partition	Description
V61Z	M	Drug Intoxication and Withdrawal
V62A	M	Alcohol Use Disorder and Dependence
V62B	M	Alcohol Use Disorder and Dependence, Sameday
V63Z	M	Opioid Use Disorder and Dependence
V64Z	M	Other Drug Use Disorder and Dependence
MDC 21 Injuries, poisoning and toxic effects of drugs		
W01Z	S	Ventilation or Cranial Procedures for Multiple Significant Trauma
W02A	S	Hip, Femur & Limb Pr for Mult Signif Trauma, Incl Implantation W Cat/Sev CC
W02B	S	Hip, Femur & Limb Pr for Mult Signif Trauma, Incl Implantation W/O Cat/Sev CC
W03Z	S	Abdominal Procedures for Multiple Significant Trauma
W04A	S	Other OR Procs for Multiple Significant Trauma W Catastrophic or Severe CC
W04B	S	Other OR Procs for Multiple Significant Trauma W/O Catastrophic or Severe CC
W60Z	M	Multiple Trauma, Died or Transferred to Another Acute Care Facility <5 Days
W61A	M	Multiple Trauma W/O Significant Procedures W Catastrophic or Severe CC
W61B	M	Multiple Trauma W/O Significant Procedures W/O Catastrophic or Severe CC
X02A	S	Microvascular Tiss Transfer or (Skin Graft W Cat/Sev CC) for Injuries to Hand
X02B	S	Skin Graft for Injuries to Hand W/O Catastrophic or Severe CC
X04A	S	Other Procedures for Injuries to Lower Limb W Catastrophic or Severe CC
X04B	S	Other Procedures for Injuries to Lower Limb W/O Catastrophic or Severe CC
X05A	S	Other Procedures for Injuries to Hand W CC
X05B	S	Other Procedures for Injuries to Hand W/O CC
X06A	S	Other Procedures for Other Injuries W Catastrophic or Severe CC
X06B	S	Other Procedures for Other Injuries W/O Catastrophic or Severe CC
X07A	S	Skin Graft for Injuries Ex Hand W Microvascular Tiss Tfr or W (Cat or Sev CC)
X07B	S	Skin Graft for Injuries Ex Hand W/O Microvascular Tiss Tfr W/O Cat or Sev CC
X40Z	O	Injuries, Poisoning and Toxic Effects of Drugs W Ventilator Support
X60A	M	Injuries W Catastrophic or Severe CC
X60B	M	Injuries W/O Catastrophic or Severe CC
X61Z	M	Allergic Reactions
X62A	M	Poisoning/Toxic Effects of Drugs and Other Substances W Cat or Sev CC
X62B	M	Poisoning/Toxic Effects of Drugs and Other Substances W/O Cat or Sev CC
X63A	M	Sequelae of Treatment W Catastrophic or Severe CC
X63B	M	Sequelae of Treatment W/O Catastrophic or Severe CC
X64A	M	Other Injury, Poisoning and Toxic Effect Diagnosis W Cat or Sev CC
X64B	M	Other Injury, Poisoning and Toxic Effect Diagnosis W/O Cat or Sev CC
MDC 22 Burns		
Y01Z	S	Ventilation for Burns and Severe Full Thickness Burns
Y02A	S	Other Burns W Skin Graft W CC
Y02B	S	Other Burns W Skin Graft W/O CC
Y03Z	S	Other OR Procedures for Other Burns
Y60Z	M	Burns, Transferred to Another Acute Care Facility <5 Days
Y61Z	M	Severe Burns
Y62A	M	Other Burns W CC
Y62B	M	Other Burns W/O CC
MDC 23 Factors influencing health status and other contacts with health services		
Z01A	S	OR Procedures W Diagnoses of Other Contacts W Health Services W Cat/Sev CC
Z01B	S	OR Procedures W Diagnoses of Other Contacts W Health Services W/O Cat/Sev CC

Note: S=surgical; M=medical; O=other

DRG	Partition	Description
Z40Z	O	Endoscopy W Diagnoses of Other Contacts W Health Services, Sameday
Z60A	M	Rehabilitation W Catastrophic CC
Z60B	M	Rehabilitation W/O Catastrophic CC
Z60C	M	Rehabilitation, Sameday
Z61A	M	Signs and Symptoms
Z61B	M	Signs and Symptoms, Sameday
Z63A	M	Other Surgical Follow Up and Medical Care W Catastrophic CC
Z63B	M	Other Surgical Follow Up and Medical Care W/O Catastrophic CC
Z64A	M	Other Factors Influencing Health Status
Z64B	M	Other Factors Influencing Health Status, Sameday
Z65Z	M	Congenital Anomalies and Problems Arising from Neonatal Period

Unrelated OR DRGs

801A	S	OR Procedures Unrelated to Principal Diagnosis W Catastrophic CC
801B	S	OR Procedures Unrelated to Principal Diagnosis W Severe or Moderate CC
801C	S	OR Procedures Unrelated to Principal Diagnosis W/O CC

Error DRGs

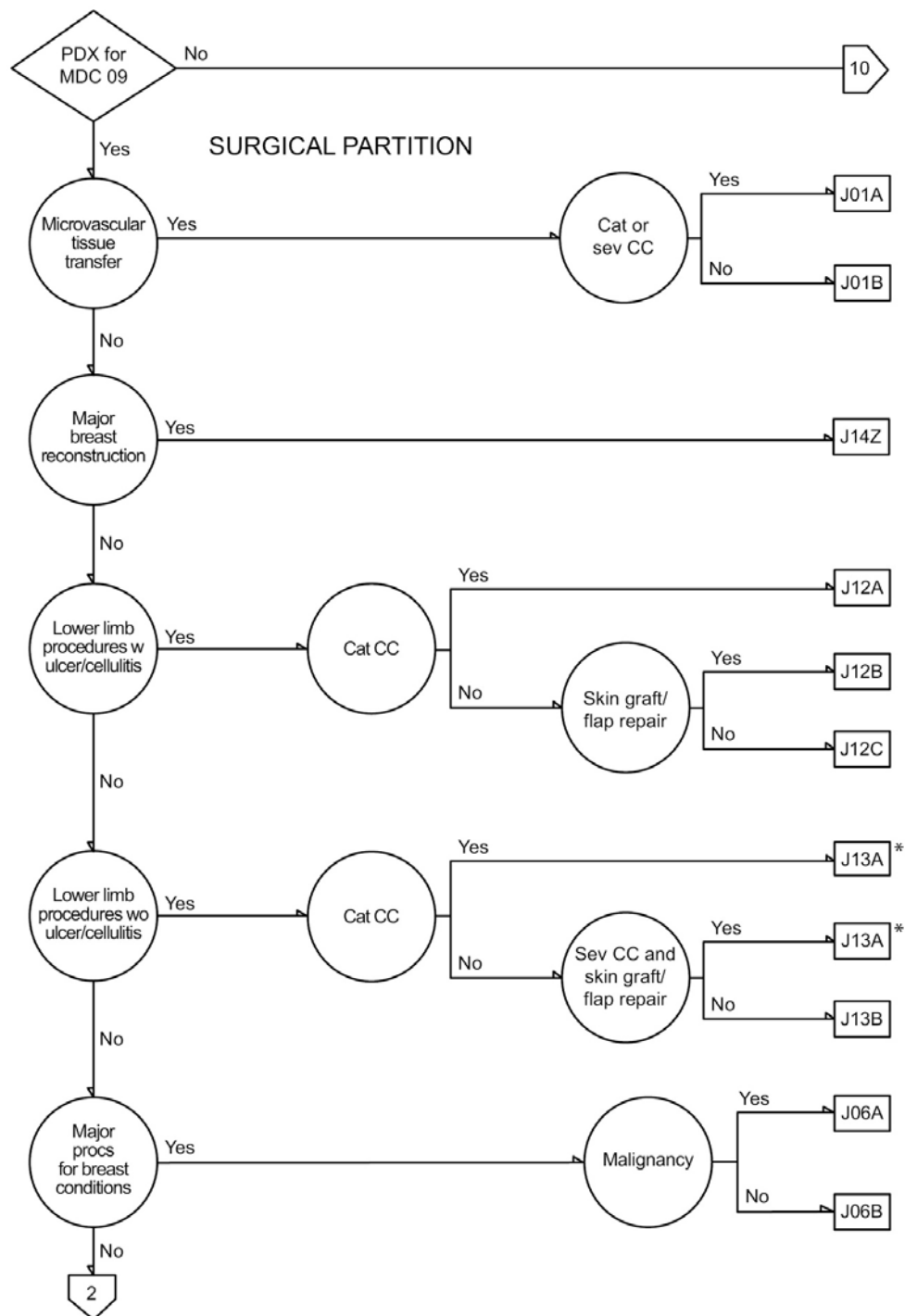
960Z	M	Ungroupable
961Z	M	Unacceptable Principal Diagnosis
963Z	M	Neonatal Diagnosis Not Consistent W Age/Weight

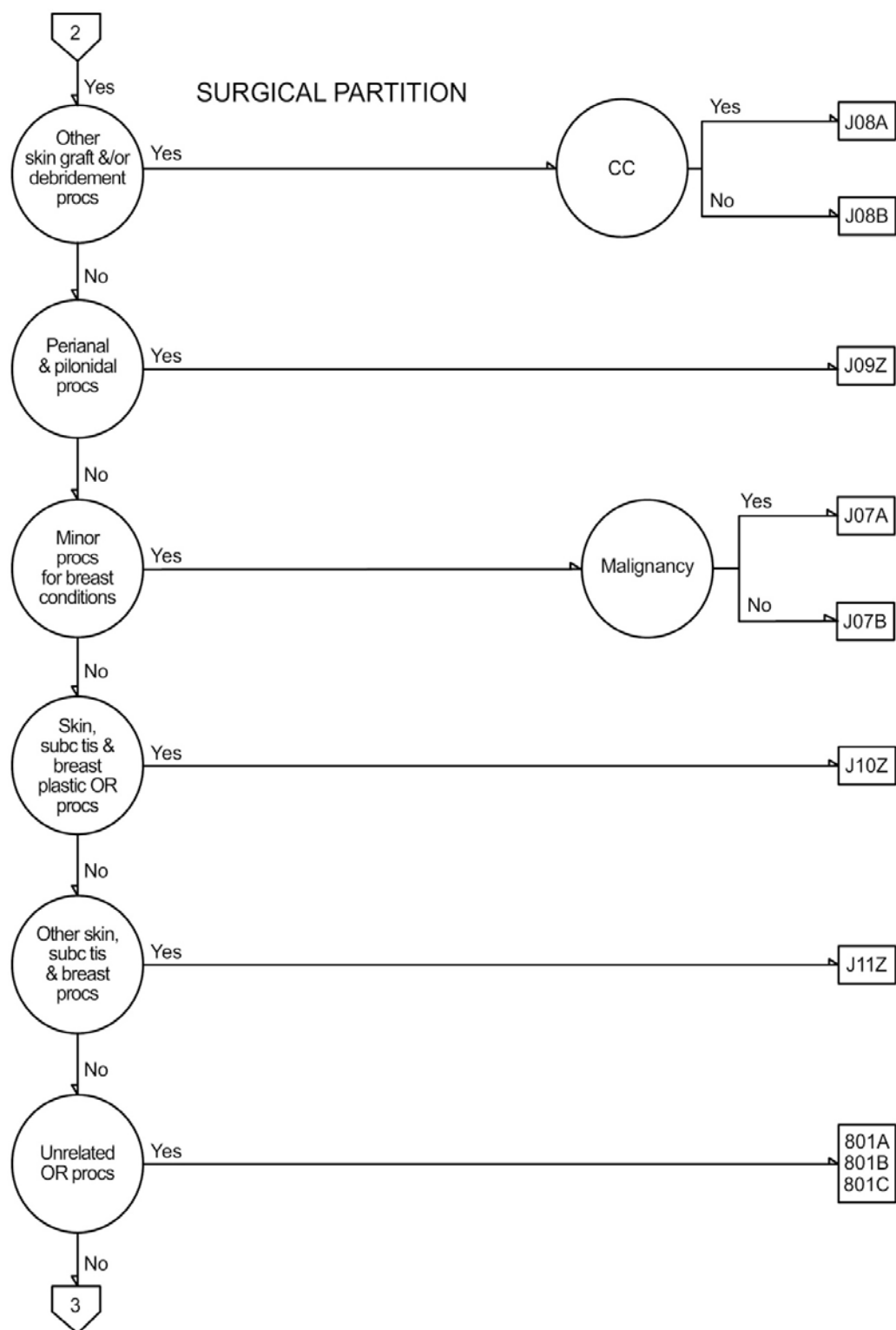
Note: S=surgical; M=medical; O=other

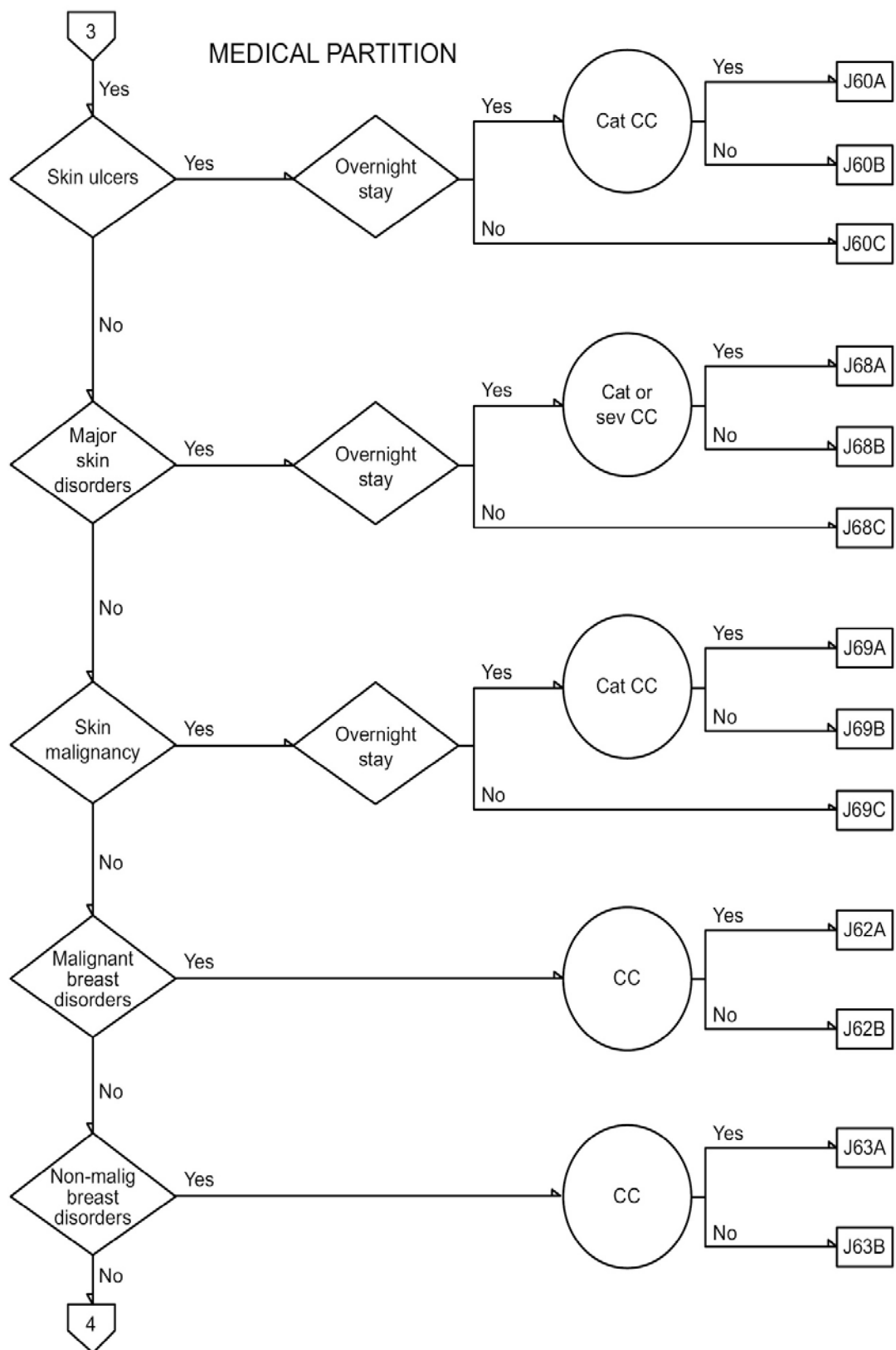
4. AR-DRG Definitions

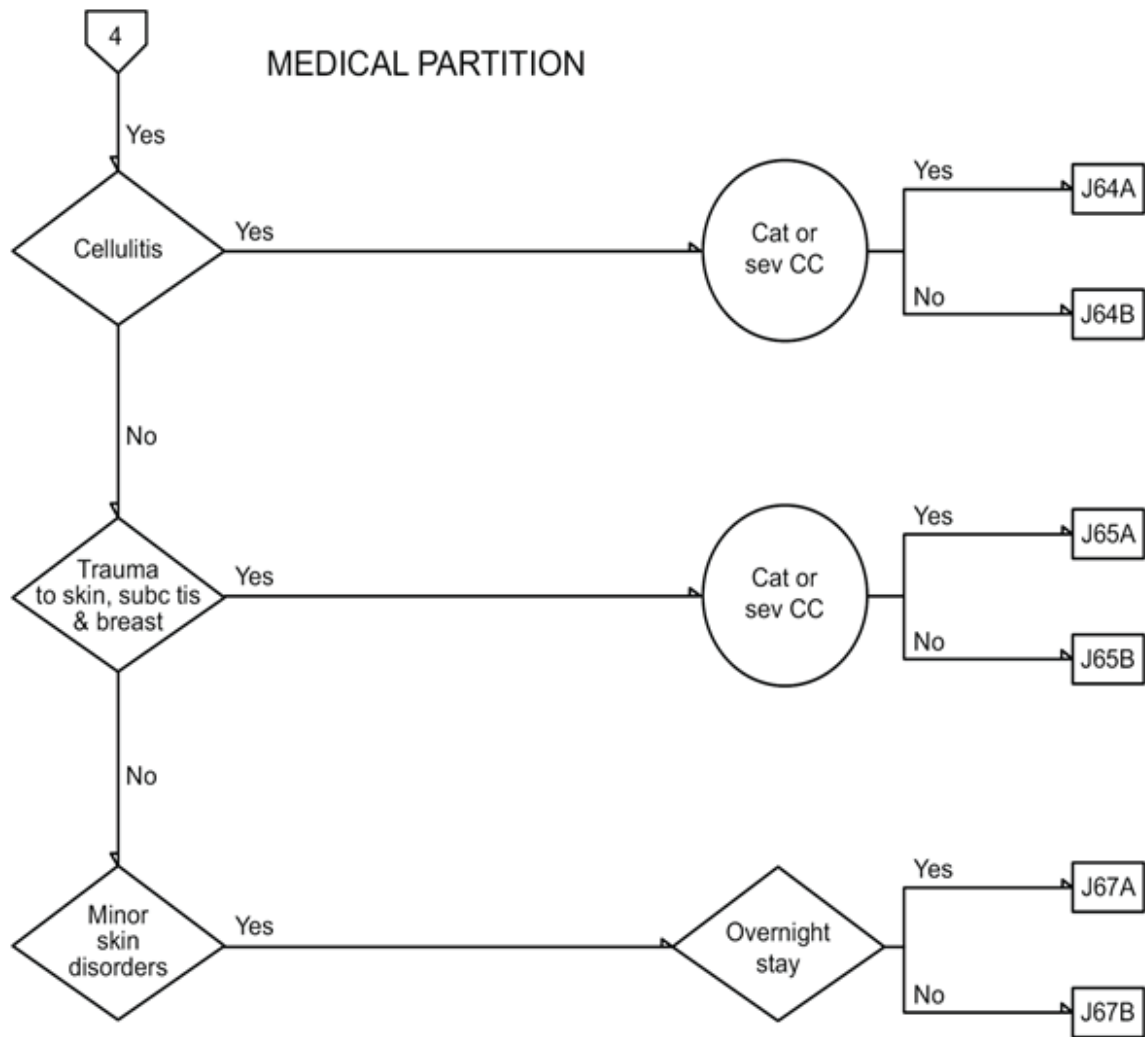
MDC 09

**Diseases and
disorders of the
skin, subcutaneous
tissue and breast**









ADRG J06**Major Procedures for Breast Conditions**

Procedure in table TAB-J06-3 or (Principal diagnosis in table TAB-J06-1 and Procedure in table TAB-J06-4)

DRG J06A**Major Procedures for Malignant Breast Conditions**

Diagnosis in table TAB J06-2

DRG J06B**Major Procedures for Non-Malignant Breast Conditions****Principal diagnosis (TAB-J06-1)**

C50.0	Malignant neoplasm of nipple and areola	N61	Inflammatory disorders of breast
C50.1	Malg neoplasm of central portion breast	N62	Hypertrophy of breast
C50.2	Malg neoplasm upp inner quadrant breast	N63	Unspecified lump in breast
C50.3	Malg neoplasm upp outer quadrant breast	N64.0	Fissure and fistula of nipple
C50.4	Malg neoplasm low outer quadrant breast	N64.1	Fat necrosis of breast
C50.5	Malg neoplasm low inner quadrant breast	N64.2	Atrophy of breast
C50.6	Malignant neoplasm axillary tail breast	N64.3	Galactorrhoea not ass w childbirth
C50.8	Overlapping malignant lesion of breast	N64.4	Mastodynia
C50.9	Malignant neoplasm breast part unsp	N64.5	Other signs and symptoms in breast
C79.81	Secondary malignant neoplasm of breast	N64.8	Other specified disorders of breast
D05.0	Lobular carcinoma in situ of breast	N64.9	Disorder of breast unspecified
D05.1	Intraductal carcinoma in situ of breast	P83.4	Breast engorgement of newborn
D05.7	Other carcinoma in situ of breast	Q83.0	Cong absence breast w absent nipple
D05.9	Carcinoma in situ of breast unspecified	Q83.1	Accessory breast
D24	Benign neoplasm of breast	Q83.2	Absent nipple
D48.6	Neoplasm uncertain or unknown beh breast	Q83.3	Accessory nipple
197.2	Postmastectomy lymphoedema syndrome	Q83.8	Other congenital malformations of breast
N60.0	Solitary cyst of breast	Q83.9	Congenital malformation of breast unsp
N60.1	Diffuse cystic mastopathy	R92	Abn findings on dx imaging breast
N60.2	Fibroadenosis of breast	T85.4	Mechanical comp breast prosth implant
N60.3	Fibrosclerosis of breast	Z40.00	Prophyltc surg risks malg neoplasm breast
N60.4	Mammary duct ectasia	Z44.3	Fit & adjust external breast prosthesis
N60.8	Other benign mammary dysplasias	Z90.1	Acquired absence of breast(s)
N60.9	Benign mammary dysplasia unspecified		

Diagnosis (TAB-J06-2)

C50.0	Malignant neoplasm of nipple and areola	C50.9	Malignant neoplasm breast part unsp
C50.1	Malg neoplasm of central portion breast	C79.81	Secondary malignant neoplasm of breast
C50.2	Malg neoplasm upp inner quadrant breast	D05.0	Lobular carcinoma in situ of breast
C50.3	Malg neoplasm low inner quadrant breast	D05.1	Intraductal carcinoma in situ of breast
C50.4	Malg neoplasm upp outer quadrant breast	D05.7	Other carcinoma in situ of breast
C50.5	Malg neoplasm low outer quadrant breast	D05.9	Carcinoma in situ of breast unspecified
C50.6	Malignant neoplasm axillary tail breast	D48.6	Neoplasm uncertain or unknown beh breast
C50.8	Overlapping malignant lesion of breast		

Procedure (TAB-J06-3)

31518-00	Simple mastectomy, unilateral	45539-00	Recon breast w insertion tissue expander
31518-01	Simple mastectomy, bilateral	45542-00	RIO breast tis expand & ins perm prosth
31524-00	Subcutaneous mastectomy, unilateral	45545-01	Reconstruction of areola
31524-01	Subcutaneous mastectomy, bilateral	45546-00	Intraderm colour skin for nipple/areola
45520-00	Reduct mammpoly w nipple reposition uni	45548-00	Removal of breast prosthesis
45520-01	Rdctn mammpoly w nipple reposition bil	45548-01	Removal of breast tissue expander
45520-02	Rdctn mammplasty w recon nipple, uni	45548-02	Adjustment of breast tissue expander
45520-03	Reduction mammplasty w recon nipple bil	45551-00	RIO breast prosth w exc fibrous capsule
45522-00	Reduction mammplasty, unilateral	45552-00	RIO & replace breast prosth w exc caps
45522-01	Reduction mammplasty, bilateral	45554-00	RIO & replace breast prosth w frm pckt
45524-00	Augmentation mammplasty, unilateral	45555-00	RIO silicone brst & replace oth prosth
45S27-00	Aug mammpoly foil mastectomy uni	45556-00	Mastopexy
45527-01	Aug mammpoly foil mastectomy bil	90720-00	Other procedures on breast
45528-00	Augmentation mammplasty, bilateral		

Procedure (TAB-J06-4)

30300-00	Sentinel lymph node biopsy	30336-00	Radical excision of lymph nodes, axilla
30335-00	Regional excision lymph nodes of axilla	90282-01	Regional excision lymph nodes other site

ADRG J07

Minor Procedures for Breast Conditions

Procedure in table TAB-J07-3 or (Principal diagnosis in table TAB-J07-1 and Procedure in table TAB-J07-4)

DRG J07A

Minor Procedures for Malignant Breast Conditions

Diagnosis in table TAB-J07-2

DRG J07B

Minor Procedures for Non-Malignant Breast Conditions

Principal diagnosis (TAB-J07-1)

C50.0	Malignant neoplasm of nipple and areola	N60.0	Solitary cyst of breast
C50.1	Malg neoplasm of central portion breast	N60.1	Diffuse cystic mastopathy
C50.2	Malg neoplasm upp inner quadrant breast	N60.2	Fibroadenosis of breast
C50.3	Malg neoplasm low inner quadrant breast	N60.3	Fibrosclerosis of breast
C50.4	Malg neoplasm upp outer quadrant breast	N60.4	Mammary duct ectasia
C50.5	Malg neoplasm low outer quadrant breast	N60.8	Other benign mammary dysplasias
C50.6	Malignant neoplasm axillary tail breast	N60.9	Benign mammary dysplasia unspecified
C50.8	Overlapping malignant lesion of breast	N61	Inflammatory disorders of breast
C50.9	Malignant neoplasm breast part unsp	N62	Hypertrophy of breast
C79.81	Secondary malignant neoplasm of breast	N63	Unspecified lump in breast
D05.0	Lobular carcinoma in situ of breast	N64.0	Fissure and fistula of nipple
D05.1	Intraductal carcinoma in situ of breast	N64.1	Fat necrosis of breast
D05.7	Other carcinoma in situ of breast	N64.2	Atrophy of breast
D05.9	Carcinoma in situ of breast unspecified	N64.3	Galactorrhoea not ass w childbirth
D24	Benign neoplasm of breast	N64.4	Mastodynia
D48.6	Neoplasm uncertain or unknown beh breast	N64.5	Other signs and symptoms in breast
I97.2	Postmastectomy lymphoedema syndrome	N64.8	Other specified disorders of breast

N64.9 Disorder of breast unspecified
P83.4 Breast engorgement of newborn
Q83.0 Cong absence breast w absent nipple
Q83.1 Accessory breast
Q83.2 Absent nipple
Q83.3 Accessory nipple
Q83.9 Congenital malformation of breast unsp

Q83.8 Other congenital malformations of breast
R92 Abn findings on dx imaging breast
T85.4 Mechanical comp breast prosth implant
Z40.00 Prophyltc surg risks malg neoplms breast
Z44.3 Fit & adjust external breast prosthesis
Z90.1 Acquired absence of breast(s)

Diagnosis (TAB-J07-2)

C50.0 Malignant neoplasm of nipple and areola
C50.1 Malg neoplasm of central portion breast
C50.2 Malg neoplasm upp inner quadrant breast
C50.3 Malg neoplasm low inner quadrant breast
C50.4 Malg neoplasm upp outer quadrant breast
C50.5 Malg neoplasm low outer quadrant breast
C50.6 Malignant neoplasm axillary tail breast
C50.8 Overlapping malignant lesion of breast

C50.9 Malignant neoplasm breast part unsp
C79.81 Secondary malignant neoplasm of breast
D05.0 Lobular carcinoma in situ of breast
D05.1 Intraductal carcinoma in situ of breast
D05.7 Other carcinoma in situ of breast
D05.9 Carcinoma in situ of breast unspecified
D48.6 Neoplasm uncertain or unknown beh breast

Procedure (TAB-J07-3)

31500-00 Excision of lesion of breast
31500-01 Open biopsy of breast
31515-00 Re-excision of lesion of breast
31557-00 Excision of duct (central) of breast
31560-00 Excision of accessory breast tissue

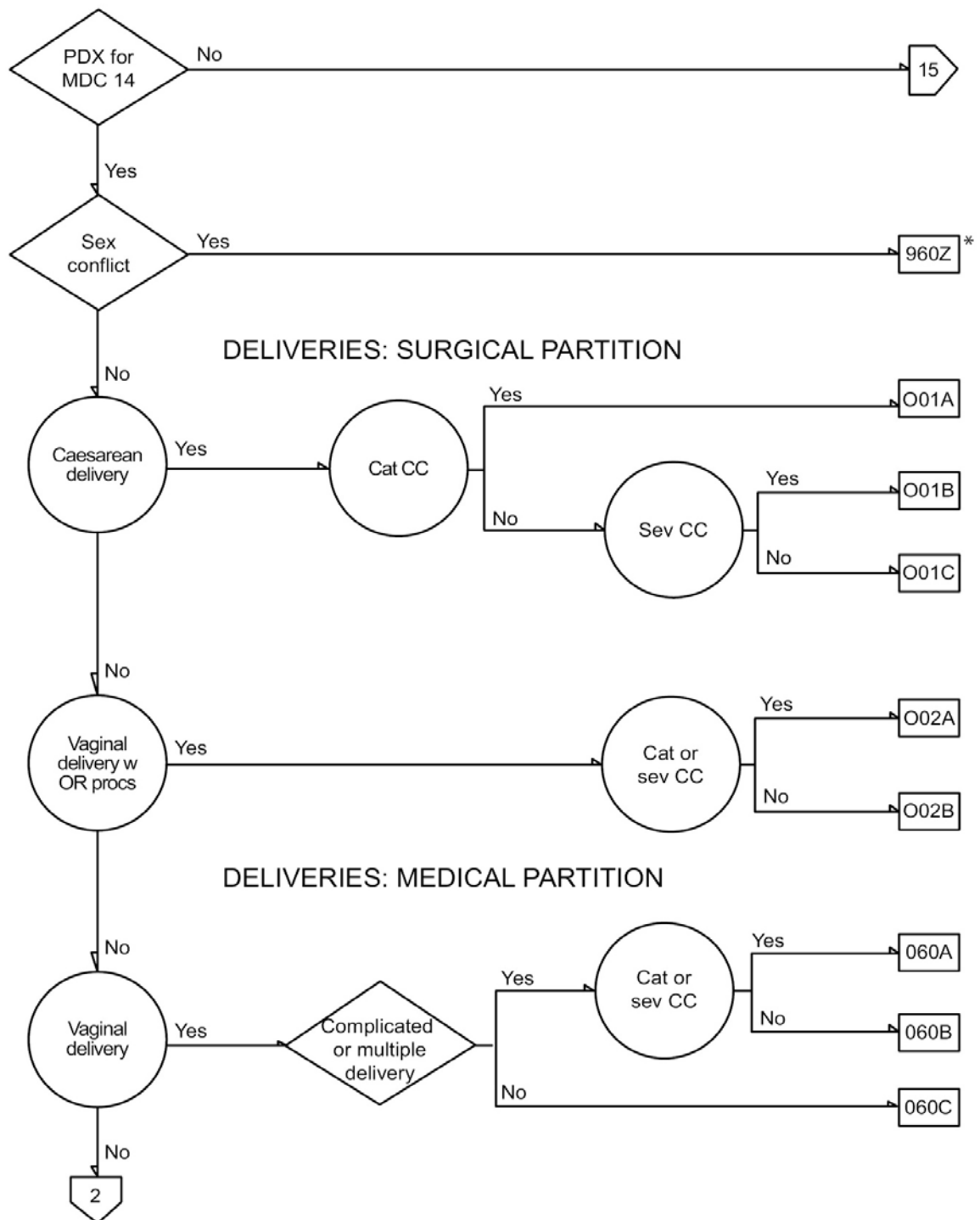
31S63-00 Surgical eversion of inverted nipple
31S66-00 Excision of accessory nipple
45033-05 Excision of vascular anomaly of breast
45545-00 Reconstruction of nipple
45545-02 Reconstruction of nipple and areola

Procedure (TAB-J07-4)

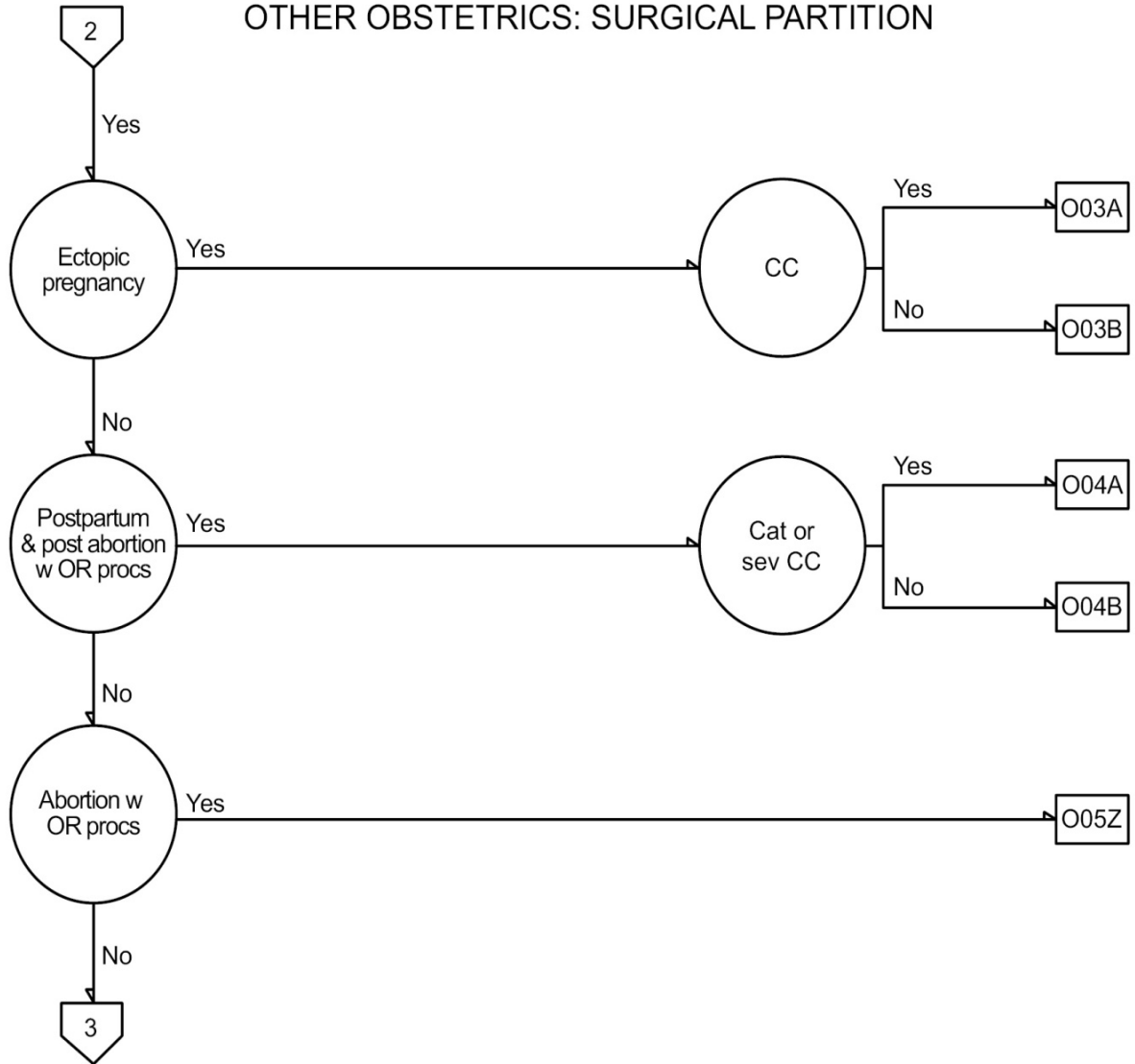
30332-00 Excision of lymph node of axilla

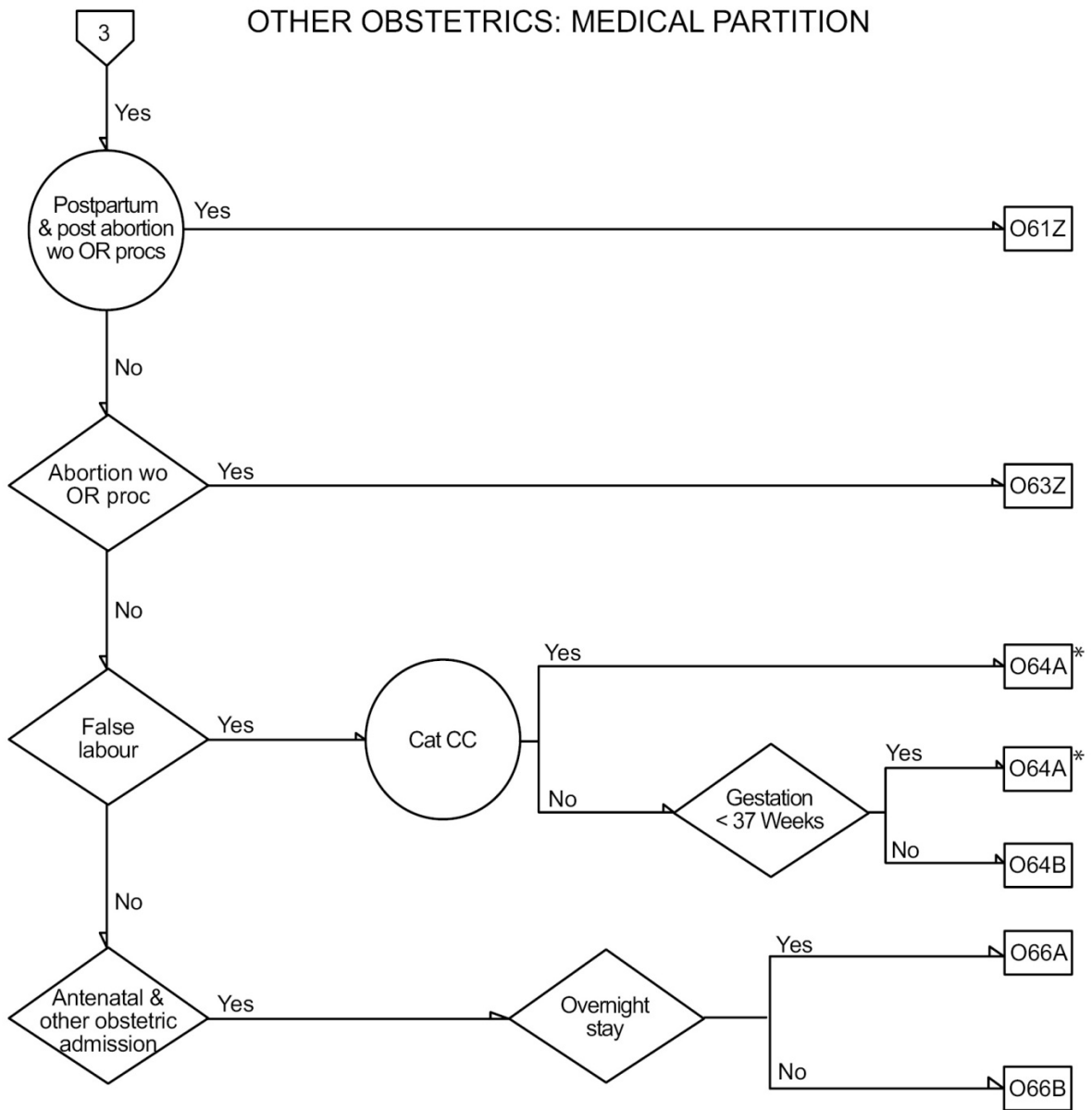
MDC 14

**Pregnancy,
childbirth and the
puerperium**



OTHER OBSTETRICS: SURGICAL PARTITION





ADRG 001**Caesarean Delivery**

Procedure in table TAB-O01-1

DRG 001A**Caesarean Delivery W Catastrophic CC**

PCCL > 3

DRG 001B**Caesarean Delivery W Severe CC**

PCCL > 2

DRG 001C**Caesarean Delivery W/O Catastrophic or Severe CC****Procedure (TAB-O01-1)**

16520-00 Elective classical caesarean section

16520-01 Emergency classical caesarean section

16520-02 Elective lower segment caesarean section

16520-03 Emergency lower segment caesarean sect

ADRG 060**Vaginal Delivery**

Principal diagnosis in table TAB-O60-1 or Diagnosis in table TAB-O60-2 or

Additional diagnosis in table TAB-O60-3

DRG 060A**Vaginal Delivery W Catastrophic CC or Severe CC**

Principal diagnosis nor in table TAB-O60-1 and PCCL > 2

DRG 060B**Vaginal Delivery W Severe CC or severe CC**

Principal diagnosis nor in table TAB-O60-1

DRG 060C**Vaginal Delivery Single Uncomplicated W/O Other Condition**

Note: Episodes with diagnosis O82 *Single delivery by caesarean section* but without caesarean procedures are assumed to be miscoded deliveries and are grouped to vaginal delivery ADRGs O02 *Vaginal Delivery W OR Procedure* or O60 *Vaginal Delivery*.

Principal diagnosis (TAB-O60-1)

O80 Single spontaneous delivery

Diagnosis (TAB-O60-2)

O81 Single delivery forceps & vacuum extr

O82 Single delivery by caesarean section

Additional diagnosis (TAB-O60-3)

Z37.0 Single live birth

Z37.1 Single stillbirth

Z37.2 Twins both liveborn

Z37.3 Twins one liveborn and one stillborn

Z37.4 Twins both stillborn

Z37.5 Other multiple births all live born

Z37.6 Other multiple births some live born

Z37.7 Other multiple births all stillborn

Z37.9 Outcome of delivery unspecified

ADRG O64**False Labour**

Principal diagnosis in cable TAB-O64-1

DRG O64A**False Labour Before 37 Weeks or W Catastrophic CC**

PCCL > 3 or Principal diagnosis in table TAB-O64-2

DRG O64B**False Labour After 37 Weeks W/O Catastrophic CC****Principal diagnosis (TAB-O64-1)**

O47.0 False labour < 37 completed weeks gest

O47.1 False labour >= 37 completed weeks gest

O47.9 False labour unspecified

Principal diagnosis (TAB-O64-2)

O47.0 False labour < 37 completed weeks gest

ADRG O66**Antenatal and Other Obstetric Admission****DRG O66A****Antenatal and Other Obstetric Admission**

Nor Same-day patient

DRG O66A**Antenatal and Other Obstetric Admission, Sameday****Principal diagnosis (TAB-O66-1)**

A34	Obstetrical tetanus	O22.9	Venous complication in pregnancy unsp
O00.0	Abdominal pregnancy	O23.0	Infections of kidney in pregnancy
O00.1	Tubal pregnancy	O23.1	Infections of bladder in pregnancy
O00.2	Ovarian pregnancy	O23.2	Infections of urethra in pregnancy
O00.8	Other ectopic pregnancy	O23.3	Infectn oth parts urinary tract in preg
O00.9	Ectopic pregnancy unspecified	O23.4	Unsp infectn urinary tract in pregnancy
O10.0	Pre-exst essent HfT comp preg brth puerp	O23.5	Infections genital tract in pregnancy
O10.1	Pre-exist HfT heart dis preg brth puerp	O23.9	Oth & unsp GU infection in preg
O10.2	Pre-exist HfT kidney dis preg brth puerp	O24.0	Pre-existing DM Type 1,in pregnancy
O10.3	Pre-exist HfT hrt kidney dis preg brth	O24.12	Pre-exist DM Type 2 in preg insulin trt
O10.4	Pre-exist sec HfT comp preg brth puerp	O24.13	Pre-exist DMType 2 in preg orl hypogly
O10.9	Unsp pre-exist HfT comp preg brth puerp	O24.14	Pre-exist DMType 2 in preg other
O11	Pre-exist HfT dis w superimp proteinuria	O24.19	Pre-existing DM Type 2,in preg unsp
O12.0	Gestational oedema	O24.22	Pre-exist DM oth spec in preg insln trt
O12.1	Gestational proteinuria	O24.23	Pre-exist DM oth spec preg orlhypogly
O12.2	Gestational oedema with proteinuria	O24.24	Pre-exist DM oth spec preg other
O13	Gestational HfT wo signif proteinuria	O24.29	Pre-existing DM oth spec in preg unsp
O14.0	Moderate pre-eclampsia	O24.32	Pre-exist DM unsp preg insln trt
O14.1	Severe pre-eclampsia	O24.33	Pre-exist DM unsp preg orl hypogly Rx
O14.9	Pre-eclampsia unspecified	O24.34	Pre-exist DM unsp preg other
O15.0	Eclampsia in pregnancy	O24.39	Pre-existing DM unspecified in preg unsp
O15.1	Eclampsia in labour	O24.42	DM arising during pregnancy insln trt
O15.9	Eclampsia unspecified as to time period	O24.43	DM arising during preg orl hypogly Rx
O16	Unspecified maternal hypertension	O24.44	DM arising during pregnancy other
O20.0	Threatened abortion	O24.49	DM arising during pregnancy unsp
O20.8	Other haemorrhage in early pregnancy	O24.52	Pre-exist IGR in pregnancy insln trt
O20.9	Haemorrhage in early pregnancy unsp	O24.53	Pre-exist IGR in pregnancy orl hypogly
O21.0	Mild hyperemesis gravidarum	O24.54	Pre-exist IGR in pregnancy other
O21.1	Hyperemesis gravidarum w metab disturb	O24.59	Pre-exist IGR in pregnancy unspecified
O21.2	Late vomiting of pregnancy	O24.92	DM in preg unsp onset insln trt
O21.8	Other vomiting complicating pregnancy	O24.93	DM in preg unsp onset orlhypogly Rx
O21.9	Vomiting of pregnancy unspecified	O24.94	DM in pregnancy unspecified onset other
O22.0	Varicose veins lower extremity in preg	O24.99	DM in pregnancy, unspecified onset, unsp
O22.1	Genital varices in pregnancy	O25	Malnutrition in pregnancy
O22.2	Sptl thrombophlebitis in pregnancy	O26.0	Excessive weight gain in pregnancy
O22.3	Deep phlebothrombosis in pregnancy	O26.1	Low weight gain in pregnancy
O22.4	Haemorrhoids in pregnancy	O26.2	Pregnancy care of habitual aborter
O22.5	Cerebral venous thrombosis in pregnancy	O26.3	Retained IUCD in pregnancy
O22.8	Other venous complications in pregnancy	O26.4	Herpes gestationis

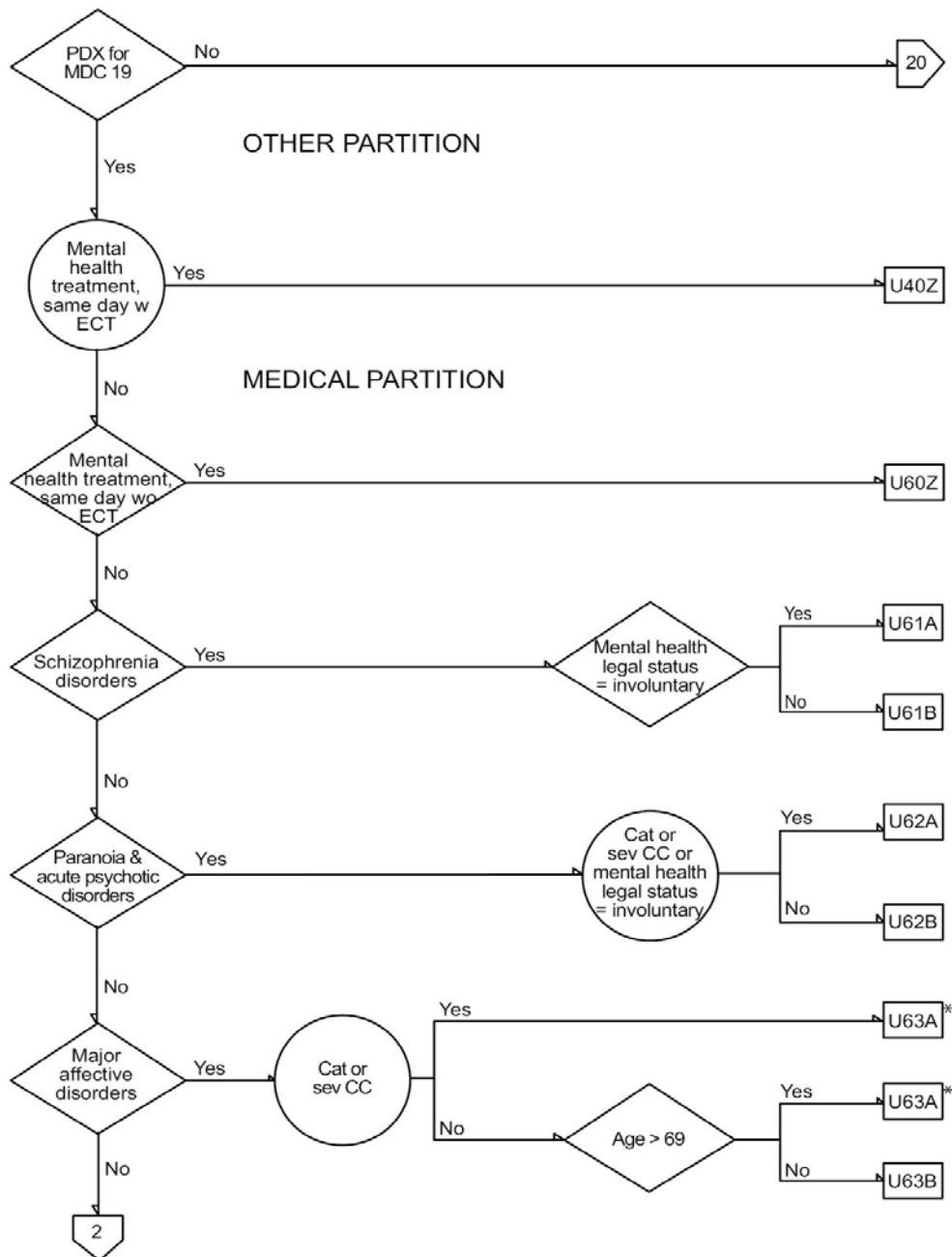
O26.5	Maternal hypotension syndrome	O33.6	Mat care disprop hydrocephalic fetus
O26.6	liver disrd in preg brth & puerperium	O33.7	Mat care disprop oth fetal deformities
O26.7	Sublux symphysis pubis preg brth puerp	O33.8	Mat care for disproportion oth origin
O26.81	Renal disease pregnancy-related	O33.9	Maternal care for disproportion unsp
O26.82	Carpal tunnel syndrome in pregnancy	O34.0	Mat care for cong malformation uterus
O26.83	Neuralgia in pregnancy	O34.1	Maternal care for tumour of corpus uteri
O26.88	Oth spec pregnancy-related conditions	O34.2	Mat care uterine scar previous surgery
O26.9	Pregnancy-related condition unspecified	O34.3	Maternal care for cervical incompetence
O28.0	Abn haematological find A /N screen moth	O34.4	Maternal care for oth abn cervix
O28.1	Abn biochemical find NN screen mother	O34.5	Mat care for oth abn gravid uterus
O28.2	Abn cytological find A/N screen mother	O3 4.6	Maternal care for abnormality of vagina
O28.3	Abn ultrasonic find A/N screen mother	O34.7	Mat care for abn vulva & perineum
O28.4	Abn radiological find A/N screen mother	O34.8	Maternal care for oth abn pelv org
O28.5	Abn chromsm find A/N screen mother	O34.9	Maternal care for abn pelvic org unsp
O28.8	Oth abn find antenatal screening mother	O35.0	Mat care suspected CNS malform fetus
O28.9	Abn find A/N screen of mother unsp	O35.1	Mat care suspect chromosomal abn fetus
O29.0	Pulmonary comp anaesthesia during preg	O35.2	Mat care suspect hereditary dis in fetus
O29.1	Cardiac comp anaesthesia during preg	O35.3	Mat care suspect dam fetus mat viral dis
O29.2	CNS comp anaesthesia during preg	O35.4	Mat care suspect damage fetus dt alcohol
O29.3	Toxic reaction to local anaesthesia preg	O35.5	Mat care suspect damage fetus dt drugs
O29.4	Spinal epidural anaes-ind headache preg	O35.6	Mat care suspect dam fetus dt radiation
O29.5	Oth comp spinal epidural anaes preg	O35.7	Mat care suspect dam fetus dt med proc
O29.6	Failed or difficult intubation dur preg	O35.8	Mat care oth suspect fetal abn & damage
O29.8	Oth comp anaesthesia during pregnancy	O35.9	Mat care suspect fetal abn damage unsp
O29.9	Comp anaesthesia during pregnancy unsp	O36.0	Maternal care for rhesus isoimmunisation
O30.0	Twin pregnancy	O36.1	Maternal care for other isoimmunisation
O30.1	Triplet pregnancy	O36.2	Maternal care for hydrops fetalis
O30.2	Quadruplet pregnancy	O36.3	Maternal care for si gns of fetal hypoxia
O30.8	Other multiple gestation	O36.4	Maternal care for intrauterine death
O30.9	Multiple gestation unspecified	O36.5	Maternal care for poor fetal growth
O31.0	Papyraceous fetus	O36.6	Maternal care for excessive fetal growth
O31.1	Continuing preg after abortn >= 1 fetus	O36.7	Mat care for viable fetus in abdo preg
O31.2	Cont preg after IU death >=1 fetus	O36.8	Mat care for oth spec fetal problems
O31.8	Oth comp specific to multiple gestation	O36.9	Maternal care for fetal problem unsp
O32.0	Maternal care for unstable lie	O40	Polyhydramnios
O32.1	Maternal care for breech presentation	O41.0	Oligohydramnios
O32.2	Maternal care transverse & oblique lie	O41.1	Infection of amniotic sac and membranes
O32.3	Mat care face brow & chin presentation	O41.8	Oth spec disrd amniotic fluid membranes
O32.4	Maternal care for high head at term	O41.9	Disrd of amniotic fluid & membranes unsp
O32.5	Mat care mult gest w malpres >=1 fetus	O42.0	PROM onset labour within 24 hours
O32.6	Maternal care for compound presentation	O42.11	PROM onset labour between 1-7 days later
O32.8	Maternal care for oth malpres fetus	O42.12	PROM onset labour more than 7 days later
O32.9	Maternal care for malpres fetus unsp	O42.2	PROM labour delayed therapy
O33.0	Mat care disprop dt defrm mat pelv bones	O42.9	Premature rupture of membranes unsp
O33.1	Mat care disprop dt contracted pelvis	O43.0	Placental transfusion syndromes
O33.2	Mat care disprop inlet contrctn pelvis	O43.1	Malformation of placenta
O33.3	Mat care disprop outlet contrctn pelvis	O43.8	Other placental disorders
O33.4	Mat care disprop mx mat & fetal origin	O43.9	Placental disorder unspecified
O33.5	Mat care disprop dt large fetus		

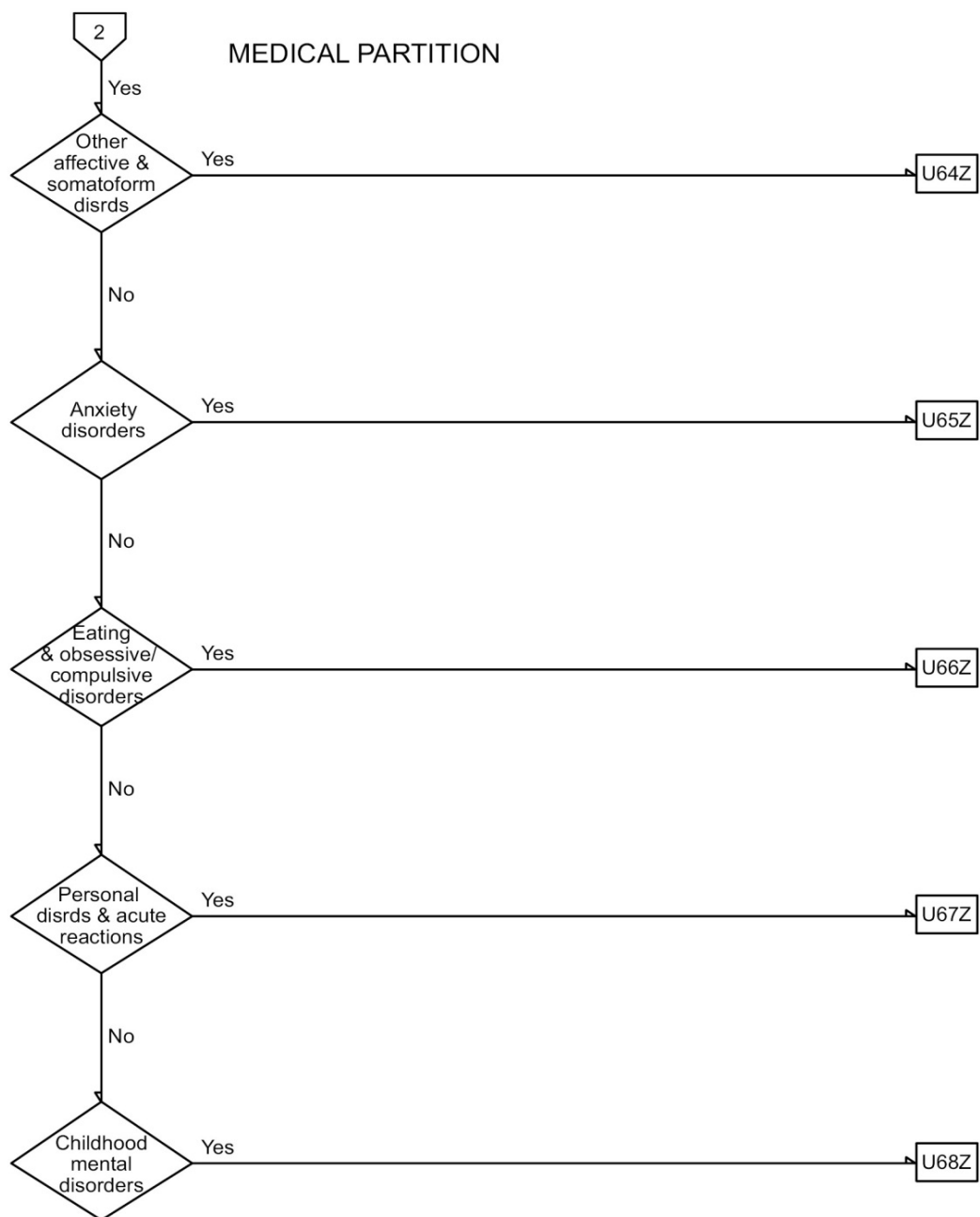
O44.0	Placenta praevia spec as wo haemorrhage	O66.8	Labour and delivery aff by oth dystocia
O44.1	Placenta praevia with haemorrhage	O66.9	Lb & delv aff by dystocia unspecified
O45.0	Prem sep placenta w coagulation defect	O67.0	Intrapartum haem w coagulation defect
O45.8	Other premature separation of placenta	O67.8	Other intrapartum haemorrhage
O45.9	Premature separation of placenta unsp	O67.9	Intrapartum haemorrhage unspecified
O46.0	Antepartum haem w coagulation defect	O68.0	Labour delivery complic FHR anomaly
O46.8	Other antepartum haemorrhage	O68.1	Labour delivery complic meconium liquor
O46.9	Antepartum haemorrhage unspecified	O68.2	Labour delivery FHR abn w mec liquor
O48	Prolonged pregnancy	O68.3	Labour delv biochem evdce fetal stress
O60.0	Preterm labour without delivery	O68.8	Labour delivery w oth evdce fetal stress
O60.1	Preterm spont labour w preterm delivery	O68.9	Labour delv complic fetal stress unsp
O60.2	Preterm spont labour w term delivery	O69.0	Labour & delivery complic prolapse cord
O60.3	Preterm delivery wo spont labour	O69.1	Delivery cord around neck w compression
O61.0	Failed medical induction of labour	O69.2	Labour delivery w oth cord entanglement
O61.1	Failed instrumental induction of labour	O69.3	Labour & delivery complic by short cord
O61.8	Other failed induction of labour	O69.4	Labour & delivery complic vasa praevia
O61.9	Failed induction of labour unspecified	O69.5	Labour & delivery w vascular lesion cord
O62.0	Primary inadequate contractions	O69.8	Labour & delivery complic oth cord comp
O62.1	Secondary uterine inertia	O69.9	Labour & delivery complic cord comp unsp
O62.2	Other uterine inertia	O71.00	Rupt of uterus bef labour, unsp
O62.3	Precipitate labour	O71.01	Spont rupt of uterus bef labour
O62.4	Hypertonic incoord prolonged contrctn	O71.02	Traum rupt of uterus bef labour
O62.8	Other abnormalities of forces of labour	O71.10	Rupt of uterus during labour,unsp
O62.9	Abnormality of forces of labour unsp	O71.11	Spont rupt of uterus during labour
O63.0	Prolonged first stage (of labour)	O71.1 2	Traum rupt of uterus during labour
O63.1	Prolonged second stage (of labour)	O71.3	Obstetric laceration of cervix
O63.2	Delay delivery second twin triplet etc	O71.4	Obstetric high vaginal laceration alone
O63.9	Long labour unspecified	O71.5	Other obstetric injury to pelvic organs
O64.0	Lb & delv aff by incomp rotatn fetal hed	O71.6	Obstetric damage pelv joints & ligaments
O64.1	Lb & delv aff by breech presentation	O71.7	Obstetric haematoma of pelvis
O64.2	Lb & delv aff by face presentation	O71.81	Obstetric uterine laceration or tear
O64.3	Lb & delv aff by brow presentation	O71.82	Diats of recti abdo muse in preg I delv
O64.4	Lb & delv aff by shoulder present	O71.88	Other specified obstetric trauma
O64.5	Lb & delv aff by compound present	O71.9	Obstetric trauma unspecified
O64.8	Lb & delv aff by oth malpos malpres	O74.0	Aspr pneumonitis dt anaes labour delv
O64.9	Lb & delv aff by malpos malpres unsp	O74.1	Oth pulm comp anaes labour delivery
O65.0	Lb & delv aff by deformed pelvis	O74.2	Cardiac comp anaes labour & deliver y
O65.1	Lb & delv aff by contracted pelvis	O74.3	CNS comp anaes during labour & delivery
O65.2	Lb & delv aff by pelvic inlet contract	O74.4	Toxic reaction LA labour & delivery
O65.3	Lb & delv aff by pelvic outlet contract	O74.5	Spinal epidural headache dur labour delv
O65.4	Lb & delv aff by FPD unsp	O74.6	Oth comp spinal epidural labour delivery
O65.5	Lb & delv aff by abn mat pelvic org	O74.7	Fail or diffclt intubation labour delv
O65.8	Lb & delv aff by oth mat pelv abn	O74.8	Oth comp anaes during labour & delivery
O65.9	Lb & delv aff by mat pelvic abn unsp	O74.9	Comp anaes during labour & delivery unsp
O66.0	Lb & delv aff by shoulder dystocia	O75.0	Mat distress during labour & delivery
O66.1	Lb & delv aff by locked twins	O75.1	Shock during or foil labour & delivery
O66.2	Lb & delv aff by large fetus	O75.2	Pyrexia during labour NEC
O66.3	Lb & delv aff by oth abn fetus	O75.3	Other infection during labour
O66.4	Failed trial of labour unspecified	O75.5	Delayed delivery after artificial ROM
O66.5	Fail applictn vacuum extr forceps unsp	O75.6	Delay delivery after spont or unsp ROM

O75.7	Vaginal delivery foil previous C/5	O99.2	Endo nutrit & metab dis preg brth puerp
O75.9	Complication of labour and delivery unsp	O99.3	Mental disrd dis nervous sys preg brth
O88.0	Obstetric air embolism	O99.4	Dis circulatory system preg brth puerp
O88.1	Amniotic fluid embolism	O99.5	Dis respiratory sys preg brth & puerp
O88.2	Obstetric blood clot embolism	O99.6	Dis digestive system preg brth puerp
O88.3	Obstetric pyaemic and septic embolism	O99.7	Dis skin sbc tis preg brth & puerp
O88.8	Other obstetric embolism	O99.8	Oth spec dis comp preg brth puerp
O91.00	Infectn nipple wo attachment difficulty	Z34.0	Supervision of normal first pregnancy
O91.10	Abscess breast wo atchmt difficulty	Z34.8	Supervision of other normal pregnancy
O91.20	Nonpurulent mastitis wo atchmt diffict	Z34.9	Supervision of normal pregnancy unsp
O92.00	Retracted nipple wo attachment diffict	Z35.0	Supervsn of pregnancy w h/o infertility
O92.10	Cracked nipple wo atchmt difficulty	Z35.1	Supervsn preg w h/o abortive outcome
O92.20	Oth I unsp dis brst wo atchmt diffict	Z35.2	Supervsn preg w oth poor obst history
O94	Seq comp preg childbirth puerp	Z35.3	Supervsn preg w h/o insuff A/N care
O98.0	Tuberculosis comp preg brth puerperium	Z35.4	Supervsn preg wgrand multiparity
O98.1	Syphilis comp preg brth & puerperium	Z35.51	Supervsn primi gravida w advanced mat age
O98.2	Gonorrhoea comp preg brth & puerperium	Z35.52	Supervsn multigravida w advanced mat age
O98.3	Oth infectn predom sex comp preg brth	Z35.6	Supervision of (very) young primigravida
O98.4	Viral hepatitis comp preg brth puerp	Z35.7	Supervsn high-risk preg dt social prob
O98.5	Oth viral dis comp preg brth puerperium	Z35.8	Supervision of oth high-risk pregnancies
O98.6	Protozoal dis comp preg brth puerperium	Z35.9	Supervsn of high-risk pregnancy unsp
O98.8	Oth mat infect dis comp preg brth puerp	Z36.0	A/N screen for chromosomal anomalies
O98.9	Unsp mat infect dis comp preg brth	Z36.1	A /N screen for raised AFP level
O99.00	Anm comp preg brth & puerp,?	Z36.2	Oth A/N screen based on amniocentesis
O99.01	Anaemia complicating pregnancy	Z36.3	A /N screen malform u/s oth phys meth
O99.02	Anm comp preg w pre-exst anm	Z36.4	A/N screen IUGR u/s oth phys methods
O99.03	Anm comp brth & puerp	Z36.5	Antenatal screening for isoimmunisation
O99.04	Anm comp brth & puerp,w pre-exst anm	Z36.8	Other antenatal screening
O99.1	Oth dis blood immune mechn preg brth	Z36.9	Antenatal screening unspecified

MDC 19

Mental diseases and disorders





ADRG U61**Schizophrenia Disorders**

Principal diagnosis in Table TAB-UG I-1

DRG U61A**Schizophrenia Disorders W Mental Health Legal Status**

Involuntary patient

DRG U61B**Schizophrenia Disorders W/O Mental Health Legal Status****Principal diagnosis (TAB-U61-1)**

F20.0	Paranoid schizophrenia	F23.10	Ac polym psych disrd w sym schiz wo stres
F20.1	Hebephrenic schizophrenia	F23.11	Ac polym psych disrd w sym schiz w stress
F20.2	Catatonic schizophrenia	F23.20	Acute schiz-like psych disrd wo ac stres
F20.3	Undifferentiated schizophrenia	F23.21	Acute schiz-like psych disrd w ac stress
F20.5	Residual schizophrenia	F25.0	Schizoaffective disorder manic type
F20.6	Simple schizophrenia	F25.1	Schizoaffective disrd depressive type
F20.8	Other schizophrenia	F25.2	Schizoaffective disorder mixed type
F20.9	Schizophrenia unspecified	F25.8	Other schizo affective disorders
F21	Schizotypal disorder	F25.9	Schizoaffective disorder unspecified

ADRG U63**Major Affective Disorders**

Principal diagnosis in cable TAB-U63-I

DRG U63A**Major Affective Disorders Age >69 or W (Catastrophic or Severe CC)**

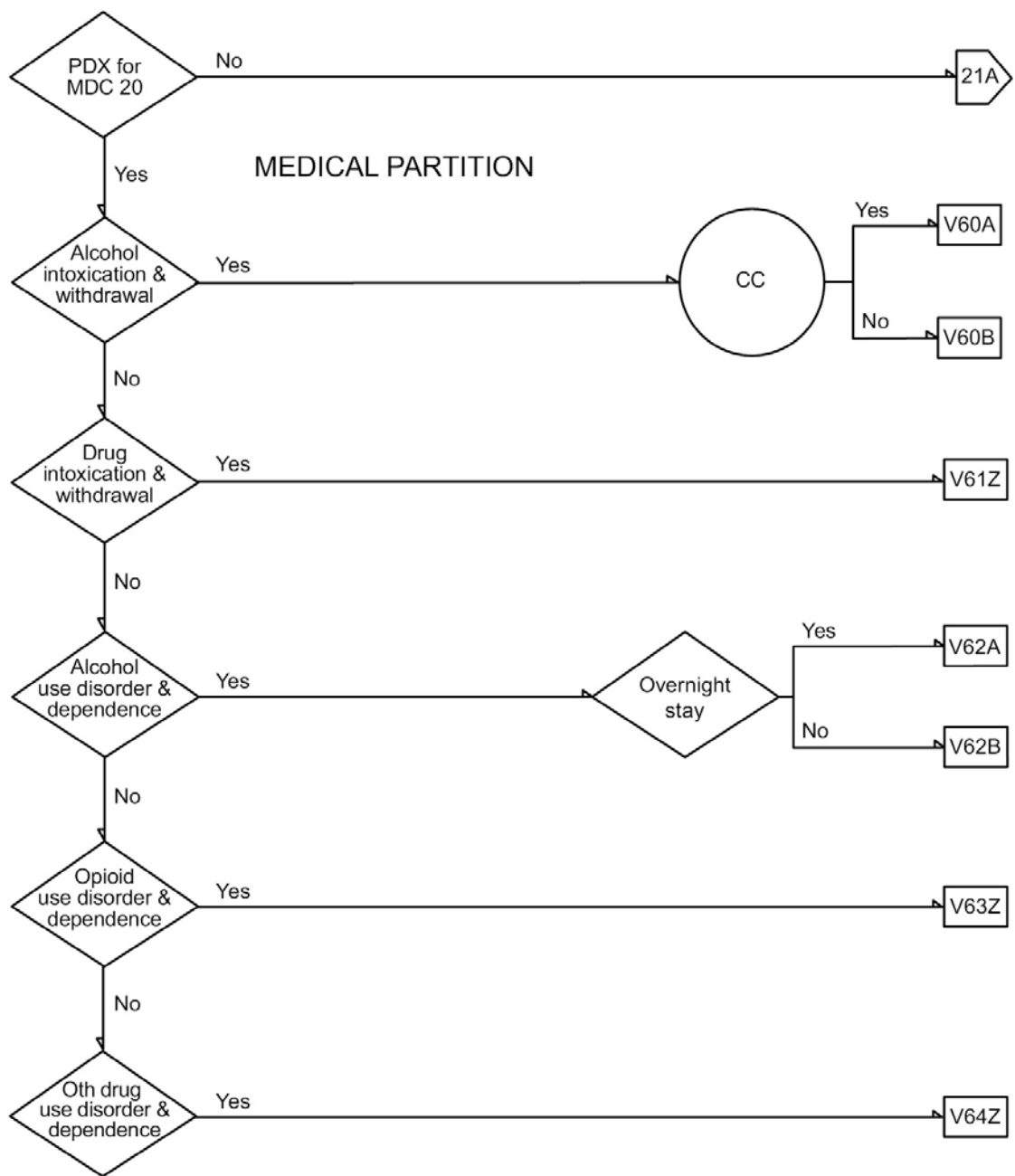
PCCL > 2 or Age > 69 years

DRG U63B**Major Affective Disorders Age >70 or W/O Catastrophic or Severe CC****Principal diagnosis (TAB-U63-1)**

F30.0	Hypomania	F32.20	Sev depres ep wo psych sym not postnatal
F30.1	Mania without psychotic symptoms	F32.21	Sev depres ep wo psych sym in postnatal
F30.2	Mania with psychotic symptoms	F32.30	Sev depres ep w psych sym not postnatal
F30.8	Other manic episodes	F32.31	Sev depres ep w psych sym in postnatal
F30.9	Manic episode unspecified	F32.80	Other depres ep not in postnatal period
F31.0	Bipolar affective disrd curr hypomanic	F32.81	Other depres ep in postnatal period
F31.1	Bipol aff disrd curr manic wo psych sym	F33.0	Rec depressive disrd curr episode mild
F31.2	Bipol aff disrd curr manic w psych sym	F33.1	Rec depressive disrd curr episode mod
F31.3	Bipol aff disrd curr mild I mod depres	F33.2	Rec depres disrd curr sev wo psych
F31.4	Bipol aff disrd sev depres wo psych sym	F33.3	Rec depres disrd current sev w psych sym
F31.5	Bipol aff disrd sev depres w psych sym	F33.4	Rec depres disrd currently in remission
F31.6	Bipolar affective disrd currently mixed	F33.8	Other recurrent depressive disorders
F31.7	Bipolar aff disrd curr in remission	F33.9	Recurrent depressive disorder unsp
F31.8	Other bipolar affective disorders	F34.8	Oth persistent mood [affective] disrd
F31.9	Bipolar affective disorder unspecified	F34.9	Persistent mood [affective] disrd unsp
F32.00	Mild depres ep not in postnatal period	F38.0	Other single mood [affective] disorders
F32.01	Mild depres ep in postnatal period	F38.1	Oth recurrent mood [affective] disorders
F32.10	Mod depres ep not in postnatal period	F38.8	Oth specified mood [affective] disorders
F32.11	Mod depres ep in postnatal period	F39	Unspecified mood [affective] disorder

MDC 20

**Alcohol/drug use
and alcohol/ drug
induced organic
mental disorders**



ADRG V60**Alcohol Intoxication and Withdrawal**

Principal diagnosis in table TAB-VG0-1

DRGV60A**Alcohol Intoxication and Withdrawal W CC**

PCCL > 1

DRGV60B**Alcohol Intoxication and Withdrawal W/O CC****Principal diagnosis (TAB-V60-1)**

F10.0 Ment & beh disrd dt alcohol use ac intox

F10.3 Ment & beh disrd dt aleo use withdr st

F10.5 Ment & beh disrd dt alco use psych disrd

F10.8 Ment beh disrd aleo oth ment beh disrd

F10.9 Ment beh disrd dt aleo? ment beh disrd

